



Make the invisible visible

DokaXact Load & Pressure

Formwork & Scaffolding.
We make it work.

Make the invisible visible

What happens inside formwork? Nobody can tell it exactly... with DokaXact – you can!

DokaXact Load and Pressure sensors enable you to monitor your concrete pouring in real time, for more safety, better scheduling and higher quality.



Save time

- Efficient pouring in all weather conditions
- Convenient visualisation directly on the smartphone
- Monitoring of multiple sensors at the same time



Increase safety

- Reliable data directly derived from the concrete during the pouring process
- More certainty when utilising SCC or low-carbon concrete
- Digital documentation of all measured data



Enhance concrete quality

- Higher concrete durability and aesthetics
- Avoidance of formwork deformation
- Prevention of cold joints



Reduce costs

- Optimum utilisation of staff, formwork and other material
- Competitive advantage on (future) project(s)

Fields of application

Just like our formwork the DokaXact sensors can be used on a wide range of concrete construction sites such as high-rise buildings, (non) residential, infrastructure and energy projects. Anywhere mission-critical data is needed DokaXact will enable you to get the most out of your project.



Tall walls and columns



Tall single-sided walls



Projects with critical anchor loads



Tunnel projects

Monitoring anchor load and fresh concrete pressure

DokaXact can be used to monitor both the anchor load and the fresh concrete pressure. The DokaXact sensors enable visibility of the information on a smartphone, to support efficient and safe controls during the concreting process.

DokaXact Load sensor



Compact wireless load cell

- Installed directly on the tie rod
- Usable for the most common tie rod systems

DokaXact Pressure sensor



Compact wireless sensor

- Installed directly in the formwork plywood
- Adjustable to any plywood thickness from 9 to 27mm



DokaXact sensors are robust, water and dust-resistant and connect via Bluetooth with the user's smartphone.

Scan here to view our videos and downloads



Success story

Reservoir Zott

Mertingen, Germany



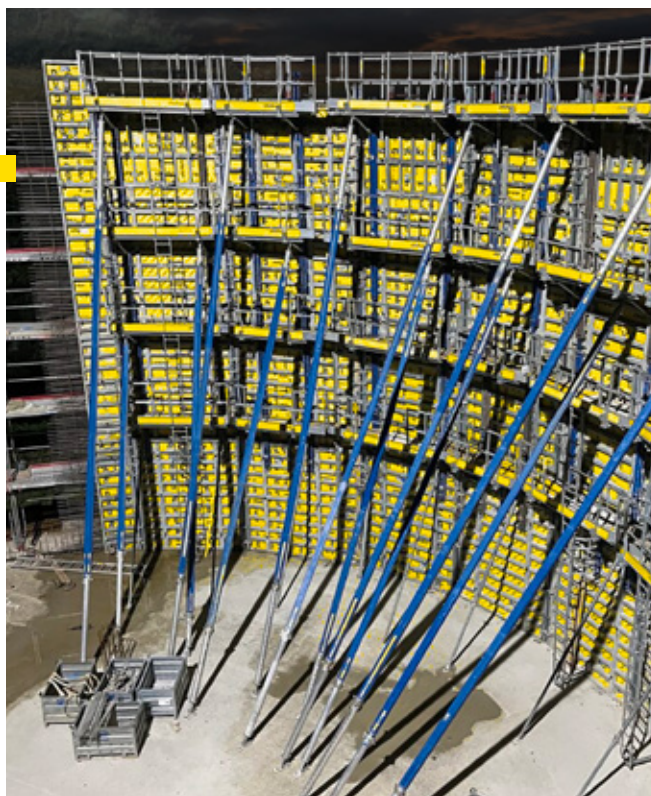
DokaXact allows safe pouring

Challenge

- Different compaction methods in use
- Concrete mix with retarding admixture

Achievement

- Speed of placing = 1.00 m/h



DokaXact app & web portal

doka

Xact

Monitoring of the concreting process and documentation

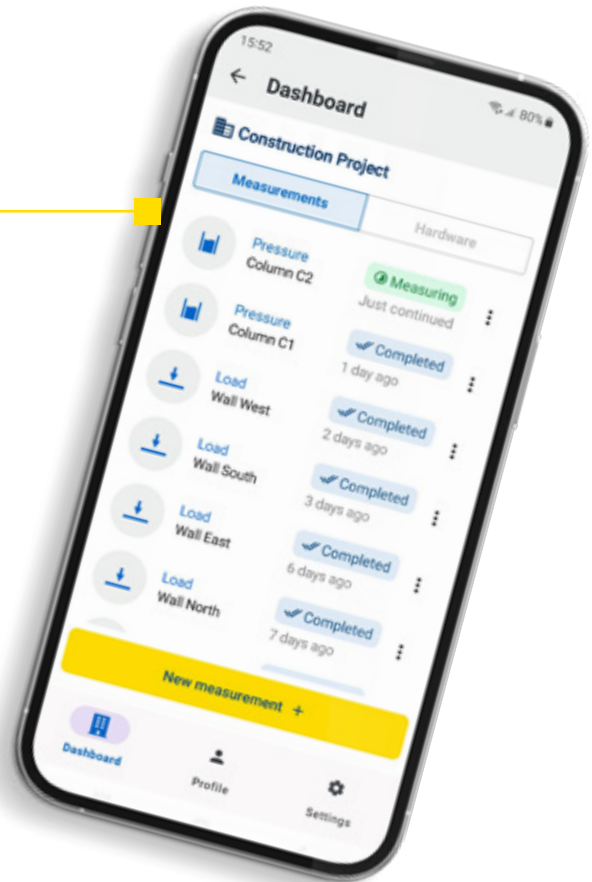
The mobile app

displays the fresh concrete pressure or anchor load in real time, enabling precise control of the concreting process. This prevents the limit values from being exceeded and maintains safety and efficiency during concreting.

Get the DokaXact app on your device

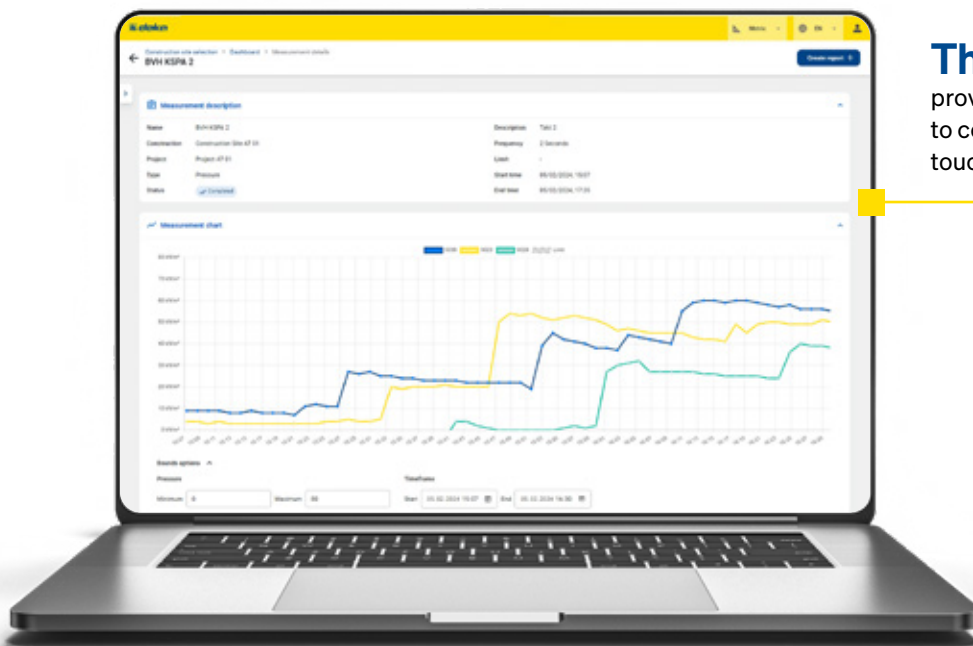


GooglePlay



The web portal

provides detailed information and access to comprehensive documentation at the touch of a button, at any time.



/dokacom



/doka



/company/doka



/doka_international



/doka_international