



Providing the 'X' factor

Located at one of North Sydney's most prestigious addresses, we take a closer look at how Doka's formwork and engineering expertise have helped to deliver this atmospheric high-rise with some of the finest views in the city.

Described as North Sydney's newest address that "combines tailored luxury with a harbour panorama", the 29-storey high-rise, which includes residences, penthouses, communal amenities, and retail, is being constructed by Aqualand, the Australian-owned and operated luxury property, hospitality and investment group. Replete with oversized luxury residences designed by leading Australian architect Woods Bagot and with interiors designed by Richards Stanisich, AURA by Aqualand's unusual design required a variable formwork solution that could cater to the building's unique shape without slowing down construction.

Commencing work with Dalma Form Specialists in December 2021, Doka provided design and engineering services for its Telescopic Protection Screen Xclimb 60 and Protection Screen Xclimb 20 systems (Eco-Screen). As a structure-attached, crane-lifted climbing system, the Telescopic Protection Screen Xclimb 60 is guided on vertical profiles fixed to the structure, meaning an entire climbing unit can be safely and easily repositioned in a single crane cycle, even during adverse weather. As a modular system, its multifunctional features also enabled it to be used as formwork for high-rise cores, piers and facades, and a protection screen. It also meant that subsequent finishing work could be sped up by being able to lift four screens at a time. For site teams, the lightweight guiding shoes also meant less physical work, which was particularly appreciated during Sydney's scorching summer months.

Speaking on behalf of the client, Dalma Form Managing Director Jason Andrijic said, "Working with Doka's engineering teams to create a suitable formwork solution has supported not only the timely progress of AURA by Aqualand but also the safety of site teams who are able to focus on the job in hand. As a result of the formwork systems provided, we were able to climb four screens at a time while still catering to AURA by Aqualand's distinct architectural design."

With the screens returned at the end of July 2023, AURA by Aqualand is approximately 80 per cent complete and on track to be handed over in mid-2024, where it will become one of the city's most sought-after residential addresses.



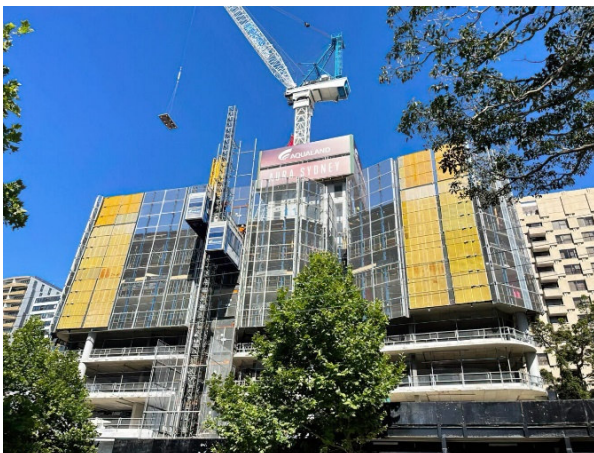
AURA by Aqualand, with its far-reaching views over north Sydney.

Photo: Aura.Doka.1.jpg
Copyright: Doka



Doka's Xclimb system in action as fast progress is made on the 29-storey high-rise.

Photo: Aura.Doka.2.jpg
Copyright: Doka



Xclimb's flexibility in working around the building's design meant faster construction and greater safety for site teams.

Photo: Aura.Doka.3.jpg
Copyright: Doka



About Doka:

Doka is a world leader in providing innovative formwork, solutions and services in all construction areas. The company is also a global supplier of well-thought-out scaffolding solutions for various applications. With 178 sales and logistics facilities in over 60 countries, Doka has a high-performing distribution network for advice, customer service and technical support on the spot and ensures that equipment is swiftly provided – no matter how big and complex the project. Doka employs 7,000 people worldwide and is a company of the Umdasch Group, which has stood for reliability, experience and trustworthiness for more than 150 years.

Press contact

Doka

Stephanie Lutz

Head of Marketing Middle East Africa & Asia Pacific

M +971 56 224 9746

stephanie.lutz@doka.com | www.doka.com