



The Missing Link Project page 08-11
Mumbai-Pune Expressway, India

Formwork & Scaffolding.
We make it work.

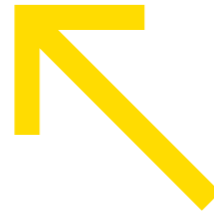
Table of contents

- 03**
Editorial
- 04 – 07**
A One-Stop-Shop
for Formwork and
Scaffolding Solutions
- 08 – 11**
Doka supports the delivery
of the Mumbai–Pune
Expressway’s Missing Link
cable-stayed bridge pylons
through formwork expertise
- 12 – 15**
Thought leadership
from across the region
- 16 – 17**
Bridging Sarawak’s
supply chains
- 18 – 19**
Singapore’s Jurong Region
Line remains on track with
Doka Singapore
- 20 – 21**
Doka expands product
portfolio with new DokaFit
formwork product line
- 22**
Engineering efficiency at
every level
- 23**
Doka becomes first formwork
and scaffolding company to
commit to Science Based
Targets Initiative (SBTi)
- 24**
Doka completes Queensland
water security project
- 25**
Doka Online Shop
expands reach into Australia
- 26 – 27**
Doka unveils future of
construction at bauma

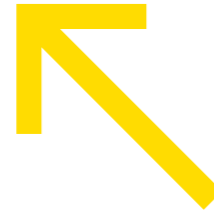
Follow us on



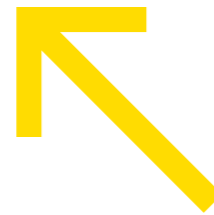
 **Instagram**
[/doka_apac](#)



 **LinkedIn**
[/company/doka-asia-pacific](#)



 **Facebook**
[/DokaAPAC](#)



Imprint: Doka Xpress is a publication of Doka. **Publisher:** Doka GmbH, Josef Umdasch Platz 1, A 3300 Amstetten, Austria. **Layout design:** COMO GmbH, Linz. In some cases the site photos show the situation during formwork assembly and are therefore not always complete from the point of view of safety.



To our clients and colleagues,

It is my distinct pleasure to launch the latest edition of Doka Xpress Asia Pacific, and to share some reflections on the incredible journey we’re on in one of the world’s most dynamic construction markets.

The Asia Pacific region continues to be a powerhouse of development, with ambitious projects shaping skylines and critical infrastructure at an unprecedented pace. From towering residential complexes to vital transport networks, the demand for innovative, safe, and efficient construction solutions has never been greater. At Doka, we are immensely proud to be a pivotal partner in this growth, committed to providing a versatile network of products, systems, and expertise tailored to the diverse needs of our customers across this vibrant region.

As a global business, these past couple of years have been particularly exciting. We’ve continued to strengthen our position as a true one-stop-shop, offering comprehensive formwork, scaffolding, and engineering solutions with a significant milestone being the successful integration of MFE Formwork Technology into the Doka family. This strategic addition tremendously enhances our offering,

particularly in monolithic aluminium formwork, allowing us to provide even more diverse and efficient solutions for projects ranging from cost-efficient housing to complex high-rises. Furthermore, our Asia-based Innovation Hub continues to deliver region-specific innovations, such as our new DokaFit Line, designed to bring unparalleled speed, simplicity, and affordability to construction sites.

Today, our focus remains firmly on empowering our clients to achieve their visions with the highest standards of quality, safety, and sustainability, while building lasting partnerships. As such, I am incredibly optimistic about the future of construction in the Asia Pacific region and Doka’s continued role in shaping it. Thank you for being a part of our journey.

Sincerely,

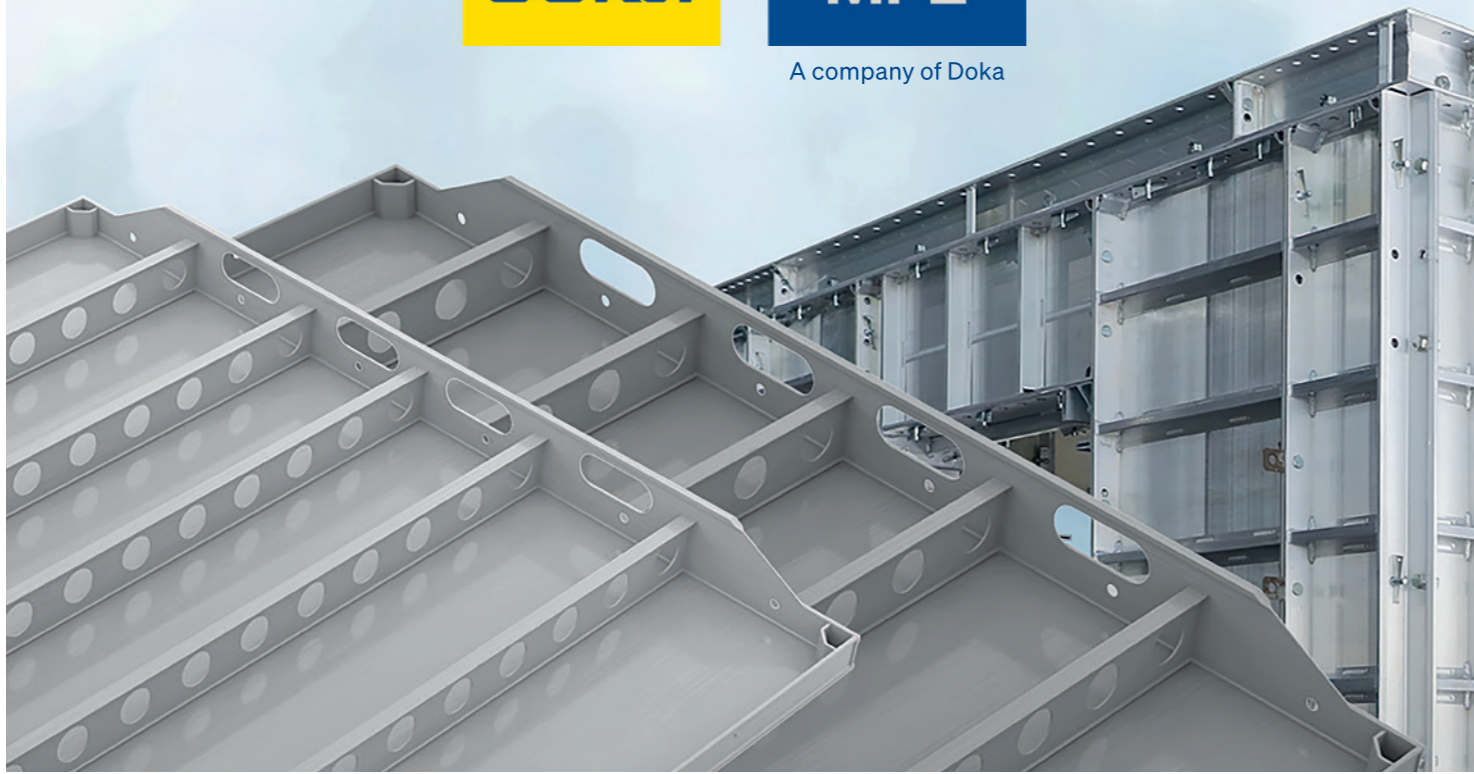
Pat Gorham

Executive Vice President,
Doka Asia Pacific





A company of Doka



MFE has refreshed its brand appearance with the Doka & MFE logo in constellation to highlight the unified strength of MFE and Doka in the market.

Doka Asia Pacific

A One-Stop-Shop for Formwork and Scaffolding Solutions

As one of the world's fastest growth regions, we take a look at Doka Asia Pacific's presence and how its evolving portfolio of products, systems, and services is supporting a brighter future for Asia's construction sector.

Driven by a regional boom in construction, the development of projects from high-rise residential buildings and commercial complexes to critical infrastructure like metro systems, bridges, and tunnels is on the rise. From extensive experience within other diverse and demanding markets, the success of evolving markets has always been contingent on construction companies sourcing reliable partners that can provide comprehensive solutions, a position that is being fulfilled by Doka Asia Pacific (APAC) as a one-stop shop for formwork, scaffolding and engineering.

Headquartered in Malaysia, Doka Asia Pacific serves as the central hub for Doka's critical regional support functions, a strategic position that has allowed Doka to effectively oversee some of the

world's fastest-growing economies, demonstrating its status as an ideal partner for a wide range of projects.

A Comprehensive Product Portfolio
Doka's strength, particularly with the emergence of construction-tech, lies in its ability to offer a holistic, solutions-oriented approach that not only provides the option of systems and components to be for sale or rent, but also custom-engineered to any given project's specific requirements. This comprehensive approach is evident in its versatile range of product offerings, which range from formwork and scaffolding services to engineering solutions.

As the product line most historically associated with Doka, its innovative formwork solutions for all areas of construction include wall formwork for diverse job site situations and specifications, slab formwork, which is adaptable to various construction tasks, load-bearing for building construction and civil engineering, and climbing for efficient high-rise construction. More recently this also includes monolithic formwork.

MFE joins the Doka family
In 2024, Doka acquired MFE Formwork Technology, a world leader in monolithic aluminium formwork solutions, that is ideally suited for various structures, including single and double-storey family homes, housing developments, and high-rise buildings. To highlight their unified strength in the market, MFE has refreshed its brand appearance with the Doka



"We are committed to providing a versatile network of products, systems, and expertise to support the diverse needs of our customers. From major infrastructure developments to cost-efficient housing projects, we strive to be the partner of choice for construction companies throughout the region."

Pat Gorham
Executive Vice President, Doka Asia Pacific

Continued on next page →

The DokaFit Handset is a lightweight system with integrated ergonomic handles, designed for efficient forming and optimised to be fit for purpose.





and MFE logo constellation, illustrating that MFE is now part of the Doka family while maintaining its own brand identity alongside Doka.

Scaffolding

Doka provides versatile scaffolding systems to meet the diverse needs of various construction projects. Their solutions include rebar scaffolding, access towers, mobile scaffolding, suspended scaffolding, shoring, and façade scaffolding.

In 2023, Umdasch Group, the parent company of Doka, acquired AT-PAC. This acquisition has strengthened Umdasch Group's position as a leading scaffolding provider in both the construction and industrial sectors. AT-PAC now serves the industrial sector. In regards to scaffolding, Doka serves the construction sector, while AT-PAC serves the industrial sector.

Innovation and Expansion

Doka Asia Pacific is committed to its continuous improvement and expansion to better serve its customers. This is demonstrated by several key initiatives, from the aforementioned acquisition of MFE Formwork Technology to the establishment of the Innovation Hub Asia. The hub's state-of-the-art facilities in Asia are strategically positioned close to the market, which ensures cost-effectiveness due to shorter delivery distances and allows products to be tailored to the specific requirements of the region. The first product line being produced in the Innovation Hub is the recently launched DokaFit line, starting with the DokaFit Handset and DokaFit Prop.



Visit our page for further details:
https://www.doka.com/ea/news/press/APAC_DokaFit

In terms of reinforcing its high-rise capabilities, the integration of Lubeca Jumpform into its offering has not only further expanded its capacity in terms of climbing formwork solutions but also brought a highly reliable system that can develop vertical construction at unprecedented speed, without sacrificing quality.

Doka offers a range of competitive components, including plywood, which can also be purchased through an online shop in Australia. Since its launch in 2024, the online shop has been providing customers with the most competitive prices on a broad range of products and systems, available 24/7.

Beyond Products: A Full-Service Provider

Doka Asia Pacific's commitment to its customers goes beyond just providing products. As a full-service provider, it offers well-thought-out solutions

Lubeca Jumpform in action at Madison Grand project in Melbourne.



and services to ensure transparency, optimised material flow, and enhanced cost efficiency on complex construction projects.

At bauma 2025, Doka unveiled one of the most ambitious digital initiatives in the formwork industry to date: Doka 360. The integrated customer platform digitally connects and streamlines all key touchpoints, from planning and ordering to site operations and return logistics along the formwork process. This marks a new chapter in construction partnerships, one that frees up time, simplifies workflows, and unleashes the full productivity potential on the jobsite.

A Focus on Sustainability

As part of its long-term strategy, Doka has also set an ambitious target to achieve net-zero by 2040, and is committed to helping its customers achieve their own sustainability goals within a similar timeframe. By providing data on its greenhouse gas emissions, Doka has recorded the sustainability credentials of over 7,000 products through its Product Carbon Footprint initiative, allowing customers and stakeholders to make better informed decisions about the products and systems they choose to work with.

Doka has become the first company in its industry to commit to the Science Based Targets initiative (SBTi). This milestone reflects our ambition to reduce emissions in line with the latest scientific guidance and contribute to limiting global warming to 1.5°C. By aligning its goals with the SBTi, Doka is positioning itself in the forefront to global effort to decarbonise the construction industry.

Proven Expertise and Global Reach

Doka has an extensive track record of delivering successful projects worldwide. Founded in 1958, built on the heritage of the Umdasch Group, which was established in 1868, Doka today has a presence on five continents, with operations in 54 countries. With approximately 8,000 employees worldwide, the Umdasch Group has consistently achieved strong growth in the face of economic slowdowns.

Doka Asia Pacific's one-stop-shop offering, combined with its focus on innovation, sustainability, and global expertise, makes it a valuable partner for construction companies in the region. Whether small residential projects or a large-scale infrastructure developments, Doka Asia Pacific has the solutions and services to help



“At Doka Asia Pacific, we are incredibly proud to be at the forefront of supporting this region's dynamic construction boom. Our vision is to be the ultimate ‘one-stop-shop’ for our customers, offering an evolving portfolio that now seamlessly integrates advanced formwork, innovative scaffolding, and comprehensive engineering solutions. We believe that true partnership extends beyond products; it encompasses meticulous planning, cutting-edge digital tools, and unwavering on-site support.”

Stefan Schedel, Regional Director, Doka Asia Pacific

Doka's full array of formwork solutions can be seen in action, including Automatic climbing formwork SKE50 plus, SKE100 plus, Guided Climbing Formwork Xclimb 60, and Large-area formwork Top 50.



A bird's eye view of The Missing Link, clearly illustrating the treacherous terrain on which the project has been developed.

Doka supports the delivery of the Mumbai–Pune Expressway's Missing Link cable-stayed bridge pylons through formwork expertise

The Mumbai-Pune Expressway, a vital artery connecting two of India's major cities, is undergoing a significant upgrade with the construction of the 13.3 km “Missing Link” project.

This ambitious undertaking, spearheaded by the Maharashtra State Road Development Corporation (MSRDC), is being constructed by the infrastructure and engineering multinational corporation Afcons Infrastructure Ltd, which is executing Package-II. This aims to revolutionise

connectivity by reducing travel distance by over six kilometres and travel time by approximately 30 minutes. Doka plays a pivotal role in this project, providing expertise and innovative systems for the construction of this complex cable-stayed bridge.

Bridging the Gap

The Missing Link project is designed to bypass the Khandala Ghat section of the existing expressway, notorious for its hairpin bends and susceptibility to landslides. The project includes two, eight-lane twin tunnels, viaducts, and a series of bridges, including a 650-metre-long cable-stayed bridge with a diamond-shaped pylon soaring 181.77 meters high, making it one of the tallest in India. This bridge is a testament to engineering ingenuity, designed to navigate steep slopes and hazardous sections of the existing expressway, transforming the 19 kilometres stretch from the Khopoli Exit to the Sinhagad Institute into a “zero-fatality corridor.”

Key Project Features

Total Project Length: 13.3 km

Components: Two eight-lane twin tunnels, viaducts, and a series of bridges

Length of Cable-Stayed Bridge: 650 metres, with four diamond-shaped pylons

Pylon Height: 181.77 metres – one of the tallest in India

Main Span: 305 metres

Continued on next page →



Solutions Utilised

Xclimb 60 Short Track: Used in combination with SKE100 plus for the complex geometry and inclinations of the diamond-shaped pylons.

Automatic Climbing Formwork SKE100 plus: For efficient and precise execution of the pylon construction.

Guided Climbing Formwork Xclimb 60: For rapid and safe construction progress.

Large-area formwork Top 50: For efficient and precise formwork applications.

Outcomes

Significantly improves connectivity and safety between Mumbai and Pune. Sets a new benchmark for India's infrastructure development and engineering prowess.

Serious Scale: Looking directly down the length of the project, it's clearer to see the scale of the massive 182-metres pylons.

The project is anticipated to revolutionise connectivity between Mumbai and Pune, by reducing travel distance by over six kilometres and travel time by approximately 30 minutes.



Formwork Solutions: Shaping Complex Structures

Doka's expertise in formwork solutions is evident in its contributions to the cable-stayed bridge's construction. The diamond-shaped pylon, with its complex geometry and inclinations in different directions, presented a unique challenge. Doka's engineers devised a tailored solution combining the Xclimb 60 Short Track and Automatic climbing formwork SKE100 plus systems. This innovative approach allows for the efficient and precise execution of the construction process, addressing both the simpler and more intricate sections of the pylon.

Doka's formwork systems are renowned for their safety, speed, and efficiency, and this project is no exception. The Automatic

climbing formwork SKE50 plus and SKE100 plus, Guided climbing formwork Xclimb 60, along with the Large-area formwork Top 50, ensure rapid and safe construction progress, while minimising manual handling, thereby reducing risks for on-site crews, and accelerating construction timelines.

Doka's involvement in the Missing Link project underscores its commitment to delivering innovative and reliable formwork solutions for complex infrastructure projects. By collaborating closely with Afcons Infrastructure Ltd, and leveraging its engineering expertise, Doka is contributing to the successful completion of this vital infrastructure project, which will significantly improve connectivity and safety on the Mumbai-Pune Expressway.

A Vision for the Future

The Missing Link project is a testament to India's ambition and engineering prowess. The cable-stayed bridge, with its soaring, diamond-shaped pylons, is a true marvel of design and construction. Viaduct 2 is a 650-metre-long cable-stayed bridge with four diamond-shaped pylons, each 182 meters tall, and a span of 305 metres. Constructing this challenging structure in such difficult terrain is a great challenge – a true masterpiece that impresses not only infrastructure enthusiasts.

As the project progresses towards its completion, it promises to transform travel between Mumbai and Pune, setting a new benchmark for India's infrastructure development.



Thought leadership from across the region



Stefan Schedel
Regional Director, Doka Asia Pacific

What are the key factors behind Doka's success in the Philippines and your strategy for sustaining this momentum?

The Philippines team is performing exceptionally well, and we are very proud of their achievements. Our success stems from a broad and diverse project portfolio, which includes significant civil works like the South Commuter Railway, showcasing our capabilities in large-scale infrastructure. To sustain this impressive momentum and support future growth, our strategy is clear: we are committed to further strengthening our local team. This involves continuous training, fostering expertise, and ensuring we have the right talent and resources to meet the evolving demands of the Philippine market.



With 160 sales and logistics facilities in 54 countries around the world, Doka's increasing presence throughout Asia is proactively supporting higher standards of construction on some of the region's most advanced building and infrastructure projects.



Aun Kua Teh
Country Manager, Doka Malaysia and Doka Singapore

What does value mean to your clients?

Clients increasingly seek genuine partnerships over supplier relationships, valuing collaborative engagements that actively contribute to project success. Our Doka Malaysia Sales Team excels in fostering such partnerships, extending value beyond transactions. By engaging clients early in the discovery phase, we ensure projects align precisely with objectives. This proactive approach streamlines initial approvals and documentation,

leading to significantly smoother execution and enhanced overall client satisfaction.

What construction trends do you see developing in your country over the next decade?

Malaysia is anticipating a significant increase in infrastructure development in the coming years. Substantial investments are foreseen across key urban regions, including Penang, Selangor, Kuala Lumpur, and Johor, as well as in East Malaysia (Sabah and Sarawak). These projects are expected to enhance national connectivity and drive considerable economic growth, something for which Doka is strategically positioned to support.

When it comes to Singapore, Doka is well-aligned with the focus on digitalisation, providing innovative formwork solutions, digital tools, and engineering support that empower our clients to build faster, safer, and more sustainably in Singapore's dynamic urban environment.



Formwork around The Heart of Luyang
Located in Kota Kinabalu, Sabah, Malaysia, Doka's advanced formwork solutions are helping to deliver The Logg, a multi-purpose development that's set to become one of Borneo's landmarks.

“Clients increasingly seek genuine partnerships over supplier relationships, valuing collaborative engagements that actively contribute to project success.”

Aun Kua Teh

Continued on next page →



Ketan Shah
Managing Director, Doka India

What does value mean to your clients?

Complete trust. Trust in terms of providing the right solution, product quality, honesty, delivery and after-sales support.

What construction trends do you see developing in your country over the next decade?

India's economy continues its robust growth, particularly driven by significant infrastructure spending. Major projects like the Mumbai-Delhi Expressway and the Mumbai-Ahmedabad Bullet Train are in full swing, aligning with the government's aim to reduce logistics costs for Indian manufactured goods. The clean energy sector is also a key focus, where we anticipate numerous wind, hydro, nuclear, and solar power developments. Simultaneously, the real estate market is booming, with 40-storey buildings becoming common in Tier 2 and 3 cities, and high-rises exceeding 50 storeys emerging in metros like Mumbai, Pune, Hyderabad, and Delhi, indicating strong potential for products such as Jump Form.

“Doka’s clients put their complete trust in us to provide the right solution.”

Ketan Shah



Tunnelling formwork at Sydney Metro
Doka's extensive experience in tunnelling and metro construction have made it the preferred choice for mass transportation projects throughout the region.



Jim Robinson
Managing Director, Doka Australia

What does value mean to your clients?

DIFOT (Delivered In Full and On Time), and at a competitive price. We also consistently solve complicated project or building-related challenges, not only in the design phase, but upon delivery while saving time, material and cost.

What construction trends do you see developing in your country over the next decade?

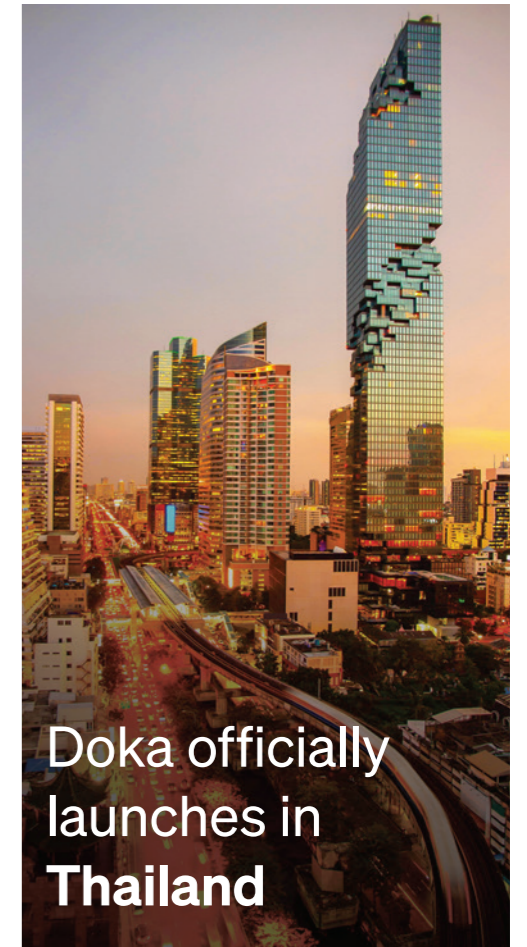
A decade-long trend of products from lower-cost manufacturing centres, particularly China, competing on quality with European and US manufacturers is set to accelerate. This shift is driven by increasing labour costs and a heightened focus on worker welfare, environmental impact, and public safety. Consequently, there's a growing emphasis on achieving efficiency and safety with minimal community disruption. While the critical need for affordable housing remains, significant momentum in addressing this shortage has yet to materialise.

“Doka consistently solves complicated project or building-related challenges, while saving time, material and cost.”

Jim Robinson



Pylon with self-climbing formwork at Dwarka Bridge
Doka's crane-independent, self-climbing, structure-guided and all-hydraulic formwork solutions support the delivery of Asia's most challenging pylons and record-breaking bridges.



Doka officially launches in Thailand

Doka is pleased to announce the official opening of Doka Thailand, marking an important step in the company's continued growth across Southeast Asia. With local operations now established, Doka brings a Southeast Asia-developed product portfolio and service offering to Thailand, supporting the country's rapidly growing skylines and infrastructure development.

Leveraging Doka's strong regional presence, Doka Thailand is committed to building close, long-term partnerships with the Thai construction industry. The local team looks forward to working alongside customers and stakeholders to help drive safer, more efficient, and more cost-effective construction solutions.

Following months of preparation, Doka Thailand is now fully operational and ready to deliver its time- and cost-saving one-stop-shop solutions. These include formwork, scaffolding, and a wide variety of components designed to meet different project requirements and budget levels, now available locally to better serve projects across Thailand.

As part of its ongoing regional expansion, Doka also plans to officially open Doka Perth in due course, further strengthening its presence and customer support capabilities in the Asia-Pacific region.

Bridging Sarawak's supply chains

Conceptualised to enhance logistical connectivity for Malaysia's agricultural communities, Doka Malaysia's stayed-cable bridge in northern Borneo will provide valuable access for farmers and traders while supporting the country's food security program.

Doka's Ringlock and Automatic climbing formwork SKE100 plus in action as progress continues on the western pylons.



Located on the northeastern side of Borneo, Malaysia's largest region of Sarawak, renowned for its biodiversity, karst and national parks, is in transformation. As part of the government's initiatives to improve productivity and strengthen supply chains, it is actively pursuing the industrialisation of its agricultural sector, thereby supporting farmers and the region's rural communities.

As part of this strategy, the region also requires infrastructure and, with it, the development of bridges and highways to traverse its numerous rivers, such as the Batang Lupar, which separates Simanggang, the capital of Sri Aman, from its neighbouring agricultural communities of Jalan Utama Kedua and Jalan Pasisir. Working with main contractor, Naim Gamuda (NAGA) JV Sdn Bhd, Doka Malaysia was brought in to provide a flexible formwork solution for the stayed-cable Batang Lupar Bridge No. 2, in particular to cater to the unusual shape of the pylons. Initially awarded in 2019, the bridge was placed on a one-year hiatus during the pandemic, meaning Doka's solution also needed to play catch up without sacrificing safety or increasing cost.

In terms of approach, Doka's formwork solution will need to deliver four 145.5 metre-high slopping pylons with two crossbeams at 16.87 and 94.15 metres, respectively, and a two-sided cast in-situ deck slab at 20.87 metres in height. Using an Automatic climbing formwork SKE100 plus for the casting work, Load-bearing tower d3, Load-bearing tower Staxo 40 and a Ringlock Shoring System were used to cast the crossbeams and deck slab. Ringlock was also used to temporarily access the Automatic climbing formwork SKE100 plus platform at height. Based on the project's remote location, the combination of Load-bearing tower d3, Load-bearing tower Staxo 40 and Ringlock meant a lower investment and transportation cost for the client, while Ringlock's multifunctional features enabled its dual purpose use as both shoring and access scaffolding.



Doka's Automatic climbing formwork SKE100 plus have already saved months from the project schedule.



Pylons on the western banks of the Batang Lupar River to the southeast of Kuching.

Arguably, the most essential feature of the project was the Automatic climbing formwork SKE100 plus system's flexibility in shaping the pylons, which gently taper until 94.15 metres. As a result, the craneless system, which also enabled the client to temporarily store materials on it to increase site efficiency, the project timeframe was reduced by two months, with the contractor optimistic that more time can be saved with an additional Automatic climbing formwork SKE100 plus system commissioned for the remaining pylons on the other side of the river.

Speaking on behalf of the main contractor, Project Manager Yii Hing commented, "Doka's reputation for delivering fast and efficient formwork solutions is well known in the region, and its work on the Batang Lupar Bridge No. 2 has been no exception. From the physical products and systems to the engineering and safety support on site, the project has progressed ahead of schedule with complete consideration of our assigned budgets."

Having started almost five years ago, Doka's hands-on training, engineering expertise and efficiency, combined with its high-performing products and systems, will mean the Batang Lupar Bridge No. 2 will likely be delivered within a year and start supporting Sarawak's agricultural communities effective immediately.

Project Highlights

Efficiency Boost: Automatic climbing formwork SKE100 plus allowed temporary material storage on the platform, enhancing site efficiency.

Time Savings: Project timeframe reduced by an initial two months.

Cost Efficiency: Combination of Load-bearing tower d3, Load-bearing tower Staxo 40, and Ringlock Shoring System reduced investment and transportation costs for the client in a remote location.

Multifunctional Use: Ringlock's dual purpose as both shoring and access scaffolding.

Overcoming Challenges: Doka's flexible solutions were fully adapted to the project's unusual pylon shapes, which further helped recover lost time during a pandemic-induced hiatus.

Singapore's Jurong Region Line remains on track with Doka Singapore

Forging part of Singapore's seventh MRT line, Doka's planning, assembly, supervision, and installation are helping to keep the Jurong Region Line (JRL) on schedule for delivery in January 2025.

Doka Singapore is past the halfway point for its work on three stations and a viaduct on Singapore's seventh MRT line. The stations, which include Toh Guan (JE4), Jurong Town Hall, and Pandan Reservoir are part of a wider USD 515 million project that includes the design, site supervision, assembly, and installation of Doka's proposed solution. Once complete, the Jurong Region Line will significantly improve the connectivity and development of the area, which is set to become the largest commercial hub outside of the Central Business District. As a result, commuters can expect to be connected to key activity nodes, such as the Jurong

Industrial Estate, Jurong Innovation District, and the Nanyang Technological University (NTU).

Working with joint venture main contractors, Daewoo-Yongnam, and subcontractor, SAE&C, Doka faced numerous logistical challenges, given the project site's heavily built-up area, live traffic from the four-lane Jurong East Central Road, and its proximity to an existing MRT line. With the Toh Guan Station requiring ten cross-heads spanning the highway, Doka's first challenge was to deliver a solution that allowed the cross-head installation to

Following just one night of road closures, Doka's Steel Girder Formwork and UniKit shoring tower ensured a key stage of the Toh Guan Station was completed on time and on budget.



By leveraging Doka's offsite prefabrication solution, the core elements of the Toh Guan Station were delivered and constructed over the course of one night.

proceed without interfering with the traffic below. By assembling a Steel Girder Formwork system three kilometres away offsite, the Doka team was able to complete the majority of the work away from the job site before installing the system in combination with its heavy-duty shoring system UniKit via truck and crane, resulting in just one overnight road closure. Serving the dual purpose of truss support and wall formwork, the Steel Girder Formwork also ensured a minimal footprint as the formwork was only supported at the centre area around the column. Complete with integrated walkways on both UniKit shoring towers and the Steel Girder Formwork, Doka ensured the safety of site teams throughout the project. Aside from completing the work with minimal disruption, this was also the first time Doka's Steel Girder Formwork system had been used outside of North America and the first time UniKit had been used in Singapore.

Commenting on the work to date, Doka Singapore Senior Sales Manager, Boo Chun Wui, said: "Finding a solution that took into account the project's various challenges was going to be difficult, particularly considering its busy location, however, by leveraging the extensive benefits of our offsite prefabrication and working in close collaboration with our partners, we were able to deliver the project specifications within minimal disruption to the location

community, while ensuring site safety remained a priority at all times."

Having started the project in February 2024, Doka's portion of the project is expected to be handed over by January 2025. Upon completion, the JRL will connect more than 60,000 households in the Jurong area within a ten-minute walk from a train station, while its three interchange stations will enhance connectivity to the existing rail network.

Doka's solution included crane-lifting its Steel Girder Formwork at night to avoid disruption to existing infrastructure.





The DokaFit Handset is a lightweight system with integrated ergonomic handles, designed for efficient forming and optimised to be fit for purpose.

landscape. Its lightweight design and intuitive assembly translate to faster project completion and reduced labour costs. This innovative system empowers our partners to build more efficiently.”

Ketan Shah, Managing Director, Doka India, highlights, “DokaFit is a transformative solution for the Indian construction market, perfectly blending cost-efficiency and durability. It’s the ideal solution for projects aiming to achieve high-quality results without compromising on budget or schedule.”

The DokaFit Handset offers exceptional efficiency and is suitable for a wide range of applications, including walls, columns, and foundations. It also allows for fast, crane-independent forming, reducing material requirements and leading to significant time and cost savings.

Optimised for durability, the DokaFit Prop offers easy handling and ergonomic fastening, while its price point makes it an ideal choice for both smaller and large-scale projects.

The DokaFit product line has officially launched with the debut of the DokaFit Handset and DokaFit Prop and is now available in Asia Pacific.



Amit Sarkar, Head of Innovation Hub Asia at Doka, adds that DokaFit’s features lead to faster project completion and reduced labour costs.



Ketan Shah, Managing Director, Doka India, highlights the demand for high-performing, yet cost-effective construction solutions is a priority to address. As such, we’re proud to see DokaFit making a significant impact in this area.

The DokaFit Prop provides a safe and cost-effective solution for slab formation, optimised for durability and fit for purpose.

Doka expands product portfolio with new DokaFit formwork product line

Doka launches DokaFit, a new product line engineered at its Asia Innovation Hub to deliver scalable time and cost savings for construction projects of any size. Designed to be truly ‘fit for purpose’, the DokaFit product line sets a new standard for formwork by offering a unique blend of durability, cost-efficiency, and multipurpose functionalities.



Pat Gorham, Executive Vice President, introduces DokaFit, showcasing Doka’s commitment to investing in durable, adaptable, and cost-effective solutions.

Manufactured in Doka’s state-of-the-art facilities in Asia, DokaFit is tailored to meet the evolving challenges of both emerging and mature markets. DokaFit products are readily available, cost-effective, and feature lightweight handling for quick assembly and disassembly. These benefits translate to tangible results on construction sites in terms of productivity, speed, and overall project efficiency.

Pat Gorham, Executive Vice President

of Doka Asia Pacific, comments on the launch, “Doka’s presence in the Asia Pacific region is built on long-term partnerships and a deep understanding of the market. As a result, we ensure our customers receive optimal value, while gaining the tools they need to succeed for years to come.”

Amitendra Sarkar, Head of Innovation Hub, Doka Asia Pacific, adds, “The DokaFit line is a game-changer for the construction



Engineering efficiency at every level



Sunway d'hill Residences is a mixed-use residential development located in the serene and lush environment of Kota Damansara, Selangor, Malaysia.

Set against the backdrop of verdant rainforest hills, the development offers a unique blend of contemporary urban living alongside the peaceful embrace of nature. This thoughtfully designed community comprises 976 serviced apartment units, with a range of sizes from 77 square meters to 115 square meters. The units are available in configurations from 2 to 4 bedrooms, each meticulously crafted to optimize natural light and ventilation, creating

a comfortable and airy living space. The development holds a prestigious sustainability certification, highlighting its commitment to energy efficiency and environmental responsibility.

MFE, a company of Doka, played a key role in supporting the construction of the development by supplying high-quality Lightdek formwork for the car park structure. This innovative formwork system not only facilitated

faster construction timelines but also ensured a premium finish. For the typical floors, MFE provided Monolithic Formwork, enabling the project team to complete one floor per week, accelerating the overall build. In addition, MFE supplied a comprehensive safety screen to safeguard the working environment, ensuring the protection of on-site personnel. Furthermore, the project included a finishing screen that allowed for seamless installation of windows, minor repairs, and exterior painting, eliminating the need for traditional scaffolding. This efficient and safe solution greatly enhanced the construction process while maintaining high standards of safety and quality.

Project Features

- Project name:** Sunway d'hill Residences
- Location:** Selangor, Malaysia
- Type of building:** mixed-use residential development

Doka becomes first formwork and scaffolding company to commit to Science Based Targets Initiative (SBTi)

The construction industry faces increasing pressure to adopt more sustainable practices, driven by both rising regulatory demands and the urgent need to mitigate its substantial environmental impact. The sector is responsible for approximately 37% of global greenhouse gas emissions, making it a key player in the fight against climate change. Doka views this challenge not only as an environmental responsibility but as a catalyst for building more resilient and sustainable business models that can drive long-term success in the evolving construction market.

On the way to net zero

Doka recently announced a commitment to the Science Based Targets initiative (SBTi) as part of our comprehensive "Net Zero 2040" sustainability strategy, setting ambitious goals for reducing our carbon footprint. The company is committed to reducing Scope 1, 2, and 3 emissions in line with the SBTi absolute reduction methodology.

A longstanding commitment to sustainable progress

Doka's leadership in sustainability goes far beyond its current commitment to the SBTi. Doka has already implemented significant measures to reduce emissions, such as increasing the use of renewable energy across its global operations.

Doka's rental model contributes significantly to the circular economy, which, alongside decarbonization, is another key pillar of the company's sustainability strategy. By refurbishing formwork after every use, Doka ensures that material and resource consumption is minimised, keeping products in circulation for extended periods. The company is also exploring the use of recycling, low-carbon materials in its formwork systems, further



reducing the environmental impact of construction projects.

Building on these efforts, Doka has also pioneered the calculation of the Product Carbon Footprint (PCF) for our portfolio of over 7,000 products. The company has been instrumental in initiating and co-developing the first industry-wide criteria for calculating the PCF of formwork and scaffolding, supporting evidence-based purchasing decisions. These efforts benefit both the climate and Doka's customers worldwide.

Doka completes Queensland water security project

Doka has concluded its 28-month contract on the Rookwood Weir, a landmark water project set to bolster regional water security and economic development.

Doka Australia has delivered its engineering and formwork contract on Australia's newest major water infrastructure asset, which has a storage yield capacity of 86,000 ML. The project was delivered by Sunwater, a government-owned corporation that supplies bulk water to over 5,000 customers across regional Queensland.

The Queensland and Australian governments have each contributed \$191.6 million to the total project budget, with Sunwater funding the remainder.

Working with Acciona Construction Australia and McCosker Contracting, Doka supplied a complete formwork solution for the main spillway monoliths, abutments, and complex fishlock structure. Doka supplied design, materials, site supervision, and engineering support from concept to completion. The full supply level was set at 16.2 metres above the riverbed, the weir further included an impoundment length of approximately 60 kilometres, a spillway length of 202 metres, and a structural length of around 350 metres. The fishlock is approximately 26 metres in height, with complex chambers for valves, water intake, and fish passage.

In addition to its scale, the project was also located approximately an 11-hour drive from Doka's closest yard, meaning workers were required to stay on-site, while logistics needed to be carefully calculated in order to maintain progress, particularly in terms of the pouring sequence, without incurring unnecessary costs.

By working closely with the client from the early stages of the project, Doka carefully calculated a formwork solution based on planning and overlapping the different areas to understand the required amount of products,

equipment, and manhours needed to deliver the project in the shortest possible time. This included using approximately 2,500 m² of Framed formwork Framax Xlife panels and 440 single-sided Dam formwork D22 brackets at the project's peak. By opting for a crane-operated solution in terms of repositioning, the combination of the Framax panels and the D22 provided enough adjustability to match the pour sizes and bracket distances, while taking into consideration the low concrete strength to allow for the pour sequence, while also ensuring fast repositioning. As a result, Doka utilised three-metre-high shutters and a 2x1.5 metre pour, prior to each reposition.

With the early involvement between Doka's engineering team and the client's construction team, the client met the objective and had a clear picture of the approach, resources, logistics, and engineering from the very start. As a result, the project team was able to adhere to the proposed workflow, while having the flexibility to change strategy around challenges as they arose. The site construction team confirmed, from a supervision standpoint, that Doka's team provided all the support required from beginning to end, particularly in terms of compliance with the permanent and temporary works design. From a product perspective, the client was particularly impressed with the durability of the Framax Xlife panels, which remained in complete working order throughout the duration of the project.

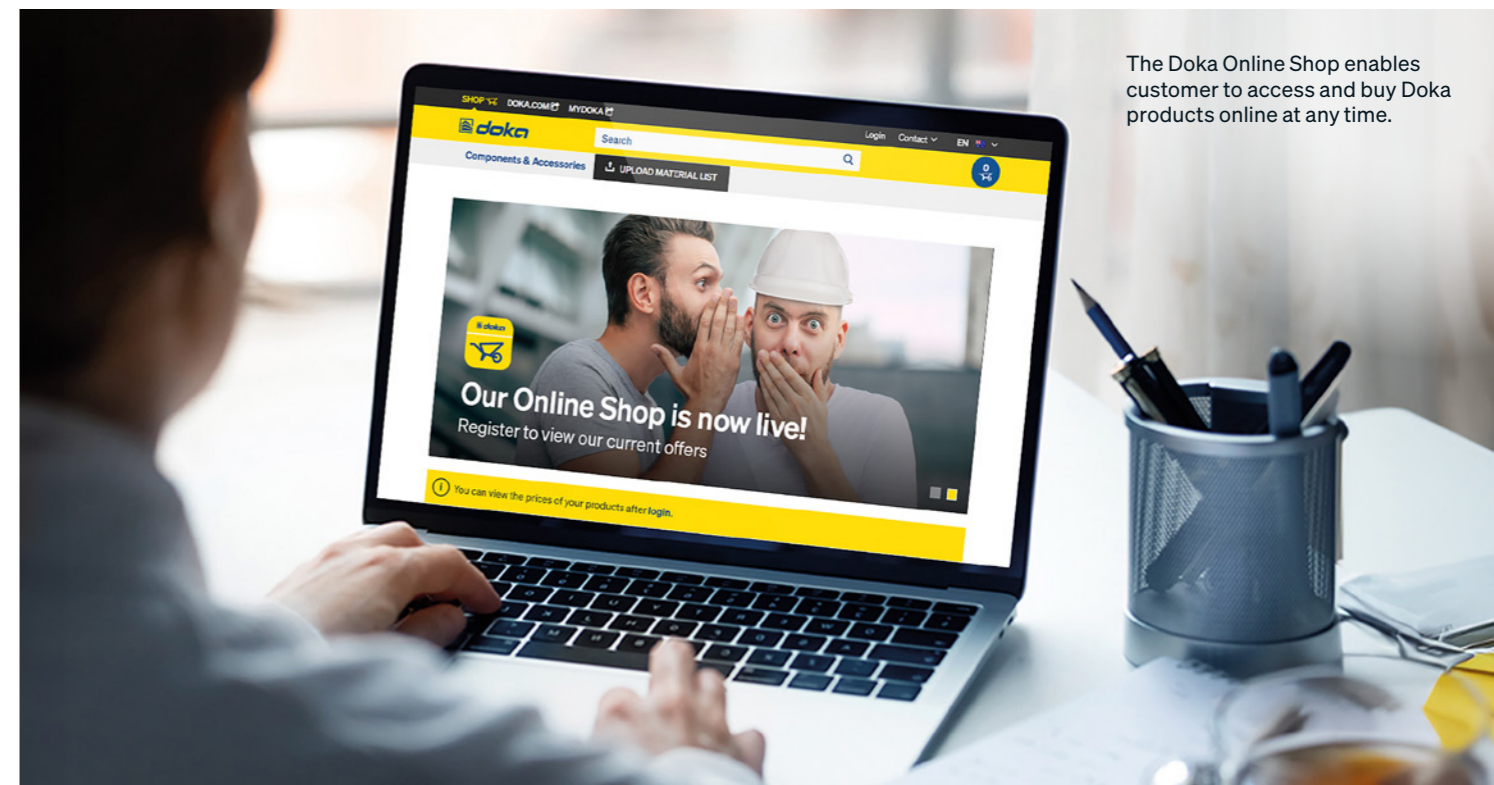
Having started the project in July 2021, Doka was proud to complete its work on Rookwood Weir in November 2023, contributing to the countless projects that will support agricultural, industrial, and urban growth throughout central Queensland.



Dam formwork D22 and Framax Xlife in position on Rookwood Weir.



Taking place over 28 months, Doka's formwork solution for the 130,000 m³ of mass and structural concrete.



The Doka Online Shop enables customer to access and buy Doka products online at any time.

Doka Online Shop expands reach into Australia

Over the past decade, the construction industry has seen a steady increase in B2B ecommerce, making it an intrinsically valuable part of the industrial landscape. Equipped with its own online shop, Doka has created a highly functional online presence that is now supporting a growing number of customers.

The shop not only serves customers of all sizes but a wide range of construction projects. This entails a diverse range of requirements. Site managers of large construction projects often need support in selecting the right products or advice on whether to buy or rent equipment. Doka's sales department takes care of these customers' specific requirements and guides them through the sales process. Experienced buyers, on the other hand, who manage smaller, more straightforward construction projects, or require components only, usually already know what they need. The online shop offers a large selection, a better overview of stock levels, and speeds up the ordering process.

Online shop focuses on customer experience

Customers can access the online offering 24/7 via their preferred electronic devices by visiting shop.doka.com. Here they can find an up-to-date overview of the range of products, their availability, and prices. Furthermore, the shop also gives recommendations for accessories and supplementary items they might need, making searching for products more efficient.



“By providing our industry stakeholders and partners direct access, we're able to provide the most competitive prices on a broad range of our most popular products in the online shop.”

Jim Robinson, Managing Director of Doka Australia and AT-PAC Australia

Doka unveils future of construction at bauma

Munich's bauma exhibition once again served as a global stage for construction innovation, and an opportunity for Doka to showcase its latest advancements designed to revolutionise the industry.

This year, Doka's presence at bauma underscored its commitment to driving efficiency, safety, and sustainability through cutting-edge technology and expanded product offerings. A significant highlight was the unveiling of Doka360, a comprehensive digital solution poised to transform project management. Doka360 offers a holistic overview of construction projects, providing real-time data and insights to optimise workflows, enhance collaboration, and ensure seamless execution from planning to completion. This integrated platform empowers users with greater control and transparency, streamlining operations across the entire construction lifecycle.

Further demonstrating Doka's dedication to sustainable and high-performance materials, the Xlife top sheet took centre stage. This innovative formwork facing is engineered for exceptional durability and reusability, significantly extending the lifespan of formwork panels. Its robust properties contribute to superior concrete finishes while reducing material consumption and waste on site, aligning perfectly with the industry's growing emphasis on environmental responsibility and cost-efficiency.

The concept of smart construction was vividly brought to life through Doka's exhibits. Showcasing how digital tools and IoT features are optimising processes, Doka highlighted solutions that provide real-time data for informed decision-making. These smart integrations are designed to

enhance productivity, improve safety, and ensure precise execution, moving the industry towards a more data-driven and intelligent future.

Expanding its comprehensive portfolio, Doka also put a strong focus on its versatile scaffolding for construction applications. While Doka does not supply scaffolding for industrial purposes, its robust and adaptable systems for building construction were prominently featured. These solutions are engineered for rapid assembly, enhanced safety, and efficient material flow, providing reliable support for various construction projects, from residential buildings to complex infrastructure.

Making a highly anticipated debut at Doka's bauma booth was MFE, following its integration into the Doka family. MFE's expertise in monolithic aluminium formwork significantly bolsters Doka's offering, providing a lightweight, durable, and highly efficient solution for casting entire concrete structures in a single pour. This addition underscores Doka's commitment to providing a complete, one-stop-shop for all formwork needs, catering to diverse project requirements with unparalleled speed and quality.

Doka's stand at bauma 2025
Doka's 5,300m² booth commanded a dominating presence at bauma 2025, while providing live shows, demonstrations and an opportunity for attendees to experience its intelligent formwork, digital tools and next-gen scaffolding solutions.



MFE at bauma 2025
MFE made its bauma debut as part of the Doka family, where it showcased its monolithic aluminium formwork solutions.

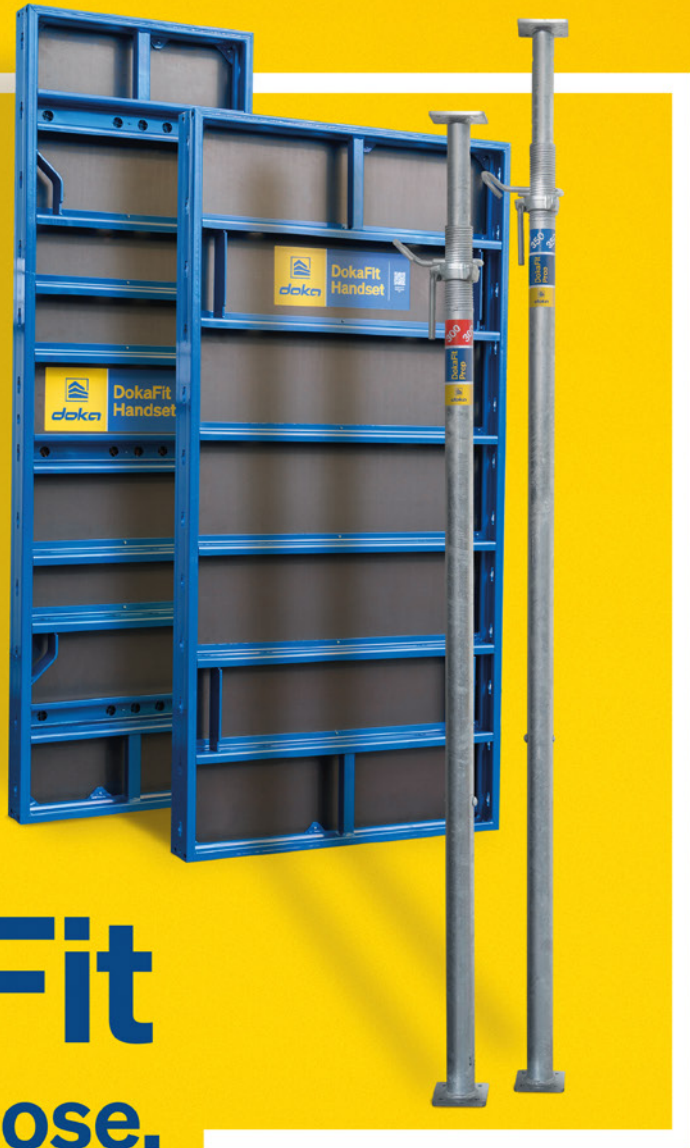


Xlife top at bauma 2025
With its sheet core made from 100 per cent recyclable plastic, Xlife is a great example of product that illustrates Doka's commitment to net zero, while remaining highly durable.

In summary, Doka's presence at bauma 2025 reinforced its position at the forefront of construction innovation. By combining advanced digital solutions, sustainable materials, and expanded product lines, Doka continues to empower the industry to build smarter, safer, and more efficiently for the future.



Contact us
for your personalised
DokaFit offer



Introducing
DokaFit
Fit for purpose.



Durable



Cost-effective



Multipurpose

Manufactured in Asia for logistical ease, DokaFit is truly 'fit for purpose'.

Discover the first two products, DokaFit Handset and DokaFit Prop, now ready to elevate your construction projects.



/DokaAPAC



/company/doka-asia-pacific



/doka_apac

meaapmarketing@doka.com | www.doka.com

Formwork & Scaffolding.
We make it work.