



# Safety Week 2024 SAFETY SALE 20-50% OFF\*

\*Offer valid on select safety solutions while supplies last.

## Xsafe Catch Fan

a cutting-edge system that sets the new standard for full protection against falling objects

With its state-of-the-art triple-layer net, Xsafe Catch Fan (XCF) ensures jobsite safety by effectively catching both large objects and small debris. Designed for quick assembly and easy repositioning this innovative system boasts fast build and jump times. The new engineered corner solution allows full perimeter protection from falling objects for unparalleled safety and efficiency on your construction projects.



Standard type

Extra wide type

New Corner Solution



OSHA  
Compliant



[shop.doka.com](https://shop.doka.com)

Buy formwork quickly and easily **online!**

Formwork & Scaffolding.  
**We make it work.**



# Smart Edge

The innovative edge protection and guardrail system in one

Engineered Edge Protection for increased safety, reduced labor and simplified site logistics at perimeter edges, internal openings, elevator shafts and stairs.

### Less labor to install, strip and maintain

all operations are done with one worker, installs 5-10x faster than conventional 2x4 or cables

### Versatility

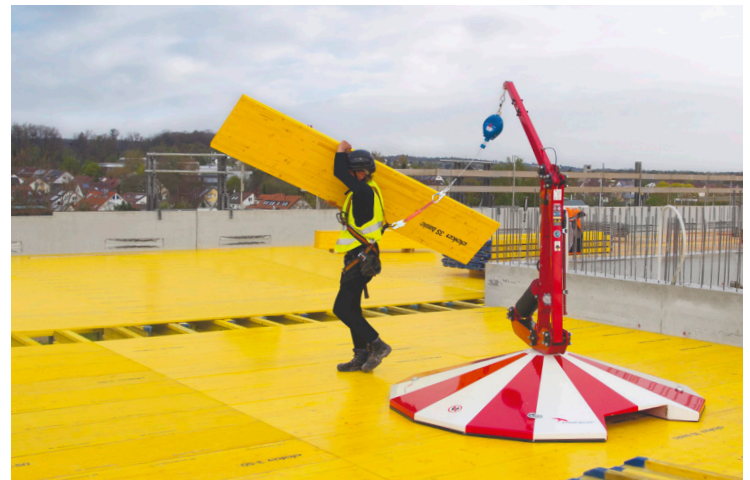
one system for any edge protection challenge



# Falpro™

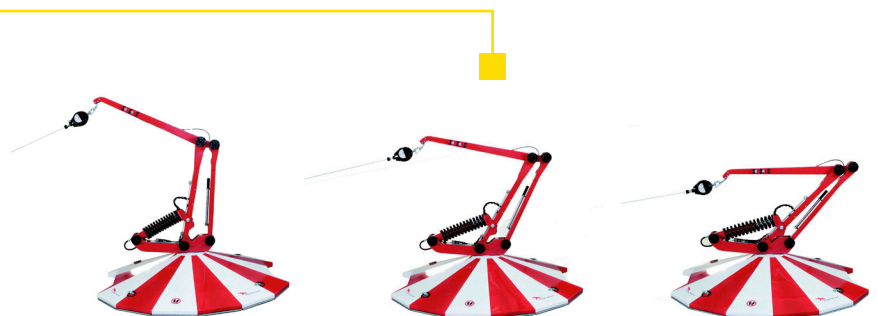
The mobile fall protection anchor point for when collective fall protection is not possible

It reduces the need for a safety monitor or a temporary cable lifeline system on leading edge deck construction and is the ideal combination of safety and freedom of movement for the user.



### Here's how it works:

- As soon as the permissible payload is exceeded, the safety unit trips: the extension arm retracts and draws the anchor point for the safety harness closer.
- At the same time a lock engages so that the mast can no longer swivel; the user's fall is safely arrested.



# Folding platform K

The pre-assembled scaffold platform for concrete construction sites

The Doka Folding Platform K are preassembled platforms delivered to the site folded flat to save space. Onsite, a few simple steps are all it takes to open the platform and to install them into position.



Lightweight, pre-assembled aluminum stair units with non-slip grooved treads for safe and fast assembly.

# Doka Stair Towers

Fast and safe vertical access

## Staxo Stair Tower

5' x 8' 4-leg stair tower with 25" wide stairs.

- Perfect for tight areas

## Ringlock Stair Tower

7' x 14' 10-leg stair tower with 35" wide stairs.

- Perfect for emergency egress and two-way traffic



Compatible with full range of Ringlock scaffolding and safety accessories.

# Climbing formwork MF240

Crane-lifted formwork for structures of any shape and any angle of inclination

Climbing formwork MF240 permits controlled, regular working cycles on all vertical structures such as high-rises, bridge piers and pylons. It consists of wall formwork, working platforms and load-transferring brackets with travelling unit. Climbing formwork MF240 is lifted quickly and easily by crane.



# Loading Platform

Materials handling on a high level

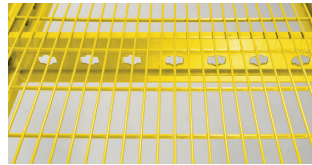
Make space on your customer project and improve material logistics on the site: The Doka loading platform is where crane-lifted loads can be set down temporarily and safely outside the building. Optimised for Doka formwork and scaffolding material, the loading platform can also be used as a set-down area for building materials and construction equipment.

Ideal for a wide range of buildings – from new builds of low-/mid-/high-rises through reconstruction to building demolition.

# Protection screen Xclimb 60

Modular guided climbing or self-climbing or demolition protection system

The Framed enclosure Xbright is a fully rentable protection-screen system that can be fitted with either a translucent but wind impermeable and non-see-through polycarbonate inlay, or with a mesh inlay. The large framed panels, and the simple method for connecting these together, keep site-erection times short.

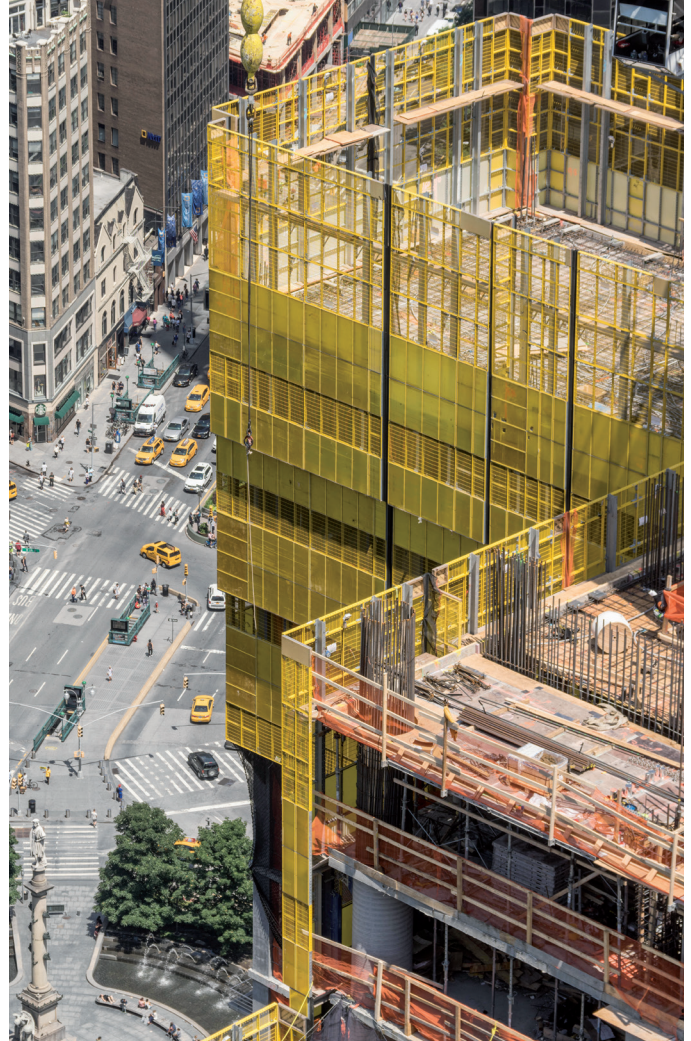


#### Option with polycarbonate inlay

- translucent
- wind-impermeable
- non-see-through

#### Option with mesh inlay

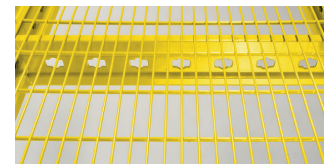
- translucent
- wind-impermeable



# Demolition Shield Application

Protection Screen Xclimb 60 ensures safety during building demolition

The screen acts as a protective barrier that helps contain debris and materials generated during the demolition process, preventing them from causing harm to nearby structures, pedestrians, and workers.



#### Option with polycarbonate inlay

- translucent
- wind-impermeable
- non-see-through

#### Option with mesh inlay

- translucent
- wind-impermeable

