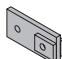
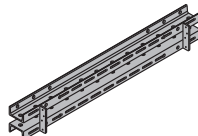
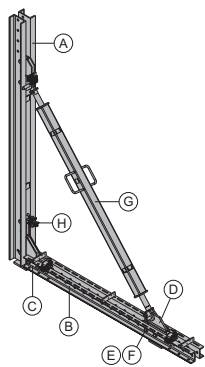

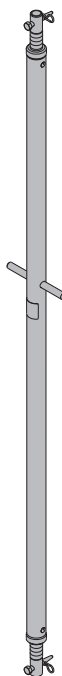
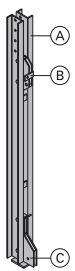
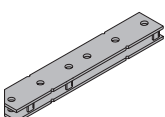
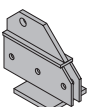


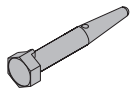
	[kg]	br.art.		[kg]	br.art.
Potporno postolje varijabilno 3,30m Abstützbock Variabel 3,30m	187,8	580516000	Zatezna ploča Zuglasche	2,5	580534000
sastoji se od:				lakirano u plavo	
(A) Nosač potpornog postolja WU14 lakirano u plavo visina: 252 cm	99,0	580510000		dužina: 19 cm	
(B) Višenamenski pojas WS10 Top50 2,00m	38,9	580007000	Višenamenski pojas WS10 Top50 1,00m	19,6	580003000
(C) Zatezna ploča	2,5	580534000	Višenamenski pojas WS10 Top50 1,75m	35,0	580006000
lakirano u plavo dužina: 19 cm			Višenamenski pojas WS10 Top50 2,00m	38,9	580007000
(D) Oslanjajuće podnožje	9,5	580532000	Višenamenski pojas WS10 Top50 2,50m	48,7	580009000
lakirano u plavo dužina: 28 cm			Višenamenski pojas WS10 Top50 2,75m	54,2	580010000
(E) Bolca za spajanje 10cm	0,34	580201000	Višenamenski pojas WS10 Top50 3,00m	60,2	580011000
pocinkovano dužina: 14 cm			Višenamenski pojas WS10 Top50 3,50m	68,4	580012000
(F) Elastični osigurač 5mm	0,05	580204000	Višenamenski pojas WS10 Top50 4,00m	79,4	580013000
pocinkovano dužina: 13 cm			Mehrweckriegel WS10 Top50		
(G) Vretenasti podupirač 12 3,00m	32,0	580521000		lakirano u plavo	
lakirano u plavo dužina: 201 - 234 cm					
(H) Spojnica sa zavrtnjem 48mm 50	0,84	682002000	Vretenasti podupirač 12 3,00m	32,0	580521000
pocinkovano veličina ključa: 22 mm Pridržavajte se uputstva za ugradnju!			Spindelstrebe 12 3,00m		
lakirano u plavo				lakirano u plavo	
				dužina: 201 - 234 cm	
			Vretenasti podupirač T7 305/355cm	35,0	584327000
			Spindelstrebe T7 305/355cm		
				pocinkovano	
					
Nosač potpornog postolja WU14 Abstützbockriegel WU14	99,0	580510000			
sastoji se od:					
(A) Profil potpornog postolja WU14 lakirano u plavo visina: 250 cm	81,0	580509000			
(B) Potisno podnožje lakirano u plavo visina: 32 cm	6,2	580531000			
(C) Uložak ankera lakirano u plavo visina: 51 cm	12,0	580533000			
				lakirano u plavo	
				visina: 252 cm	
					
Oslanjajuće podnožje Stütزشuh	9,5	580532000	Spojni element optate FF20/50 Z Elementverbinder FF20/50 Z	6,0	587533000
				lakirano u plavo	
				dužina: 55 cm	
					
					

[kg] br.art.

Bolcna za spajanje 10cm

Verbindungsbolzen 10cm

0,34 580201000

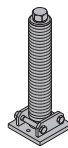
pocinkovano
dužina: 14 cm

[kg] br.art.

Zadnji potisni navoj za potporno postolje

Abstützbockspindel hinten

18,3 580515000



pocinkovano

Elastični osigurač 5mm

Federvorstecker 5mm

0,05 580204000

pocinkovano
dužina: 13 cm**Anker pojas 0,70m**

Anker pojas 1,95m

Anker pojas 2,95m

Ankerriegel

27,0 580517000

76,3 580545000

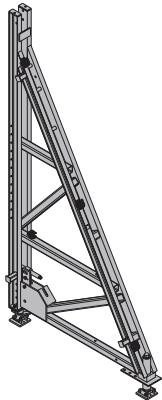
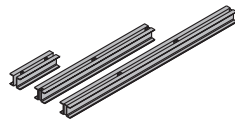
110,0 580546000

lakirano u plavo

Potporno postolje univerzalno F 4,50m

Abstützbock-Universal F 4,50m

306,0 580500000

lakirano u plavo
dužina: 196 cm
visina: 365 - 394 cm**Višenamenski pojas WU12 Top50 2,00m**

Višenamenski pojas WU12 Top50 3,00m

Mehrzweckriegel WU12 Top50

50,0 580022000

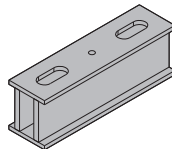
75,7 580024000

lakirano u plavo

Anker profil 0,55m

Ankerprofil 0,55m

44,5 582904000

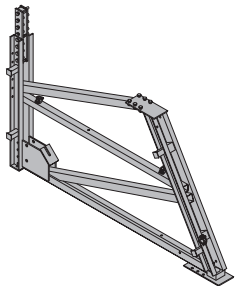


lakirano u plavo

Dogradni ram F 1,50m

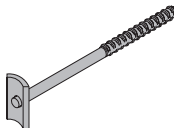
Anbaurahmen F 1,50m

236,0 580502000

lakirano u plavo
dužina: 280 cm**Držać anker pojasa**

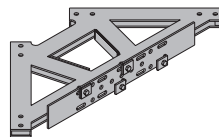
Ankerriegelhalter

0,62 580539000

pocinkovano
dužina: 31 cm**Ugaona ploča za potporno postolje**

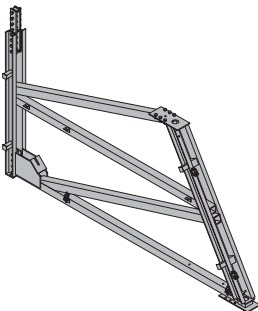
Ecklasche Abstützbock

44,4 580518000

lakirano u plavo
dužina: 92 cm
širina: 92 cm**Dogradni ram F 2,00m**

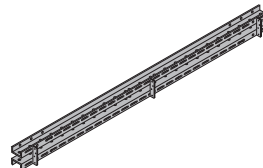
Anbaurahmen F 2,00m

451,0 580501000

lakirano u plavo
dužina: 394 cm**Fasadni pojas WS10 2,50m**

Fassadenriegel WS10 2,50m

50,0 580692000

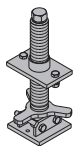


lakirano u plavo

Prednji potisni navoj za potporno postolje

Abstützbockspindel vorne

8,5 580508000

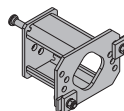


pocinkovano

Distancer noseće konstrukcije 20cm

Bockdistanz 20cm

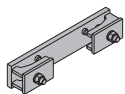
9,4 580519000

pocinkovano
dužina: 25 cm
širina: 19 cm
visina: 20 cm

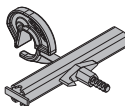
[kg] br.art.

Klema za distancer noseće konstrukcije 20cm

Klemme für Bockdistanz 20cm

5,0 582920000pocinkovano
dužina: 36 cm
širina: 7 cm**Držać pojasa 9-15cm**

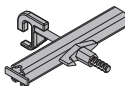
Riegelhalter 9-15cm

2,7 580625000

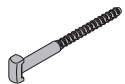
pocinkovano

Držać vertikalnog i horizontalnog pojasa

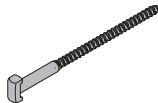
Keilriegelhalter

2,5 580526000pocinkovano
dužina: 26 cm
visina: 31 cm**Framax-univerzalni vijak 10-16cm**

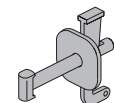
Framax-Universalverbinder 10-16cm

0,60 588158000pocinkovano
dužina: 26 cm**Framax-univerzalni vijak 10-25cm**

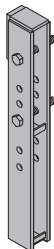
Framax-Universalverbinder 10-25cm

0,69 583002000pocinkovano
dužina: 36 cm**Framax-stega**

Framax-Spannklemme

1,5 588152000pocinkovano
dužina: 21 cm**Framax-spojnica rama noseće konstrukcije**

Framax-Bocklasche

15,0 580506000lakirano u plavo
visina: 77 cm**Framax-vijak za ram noseće konstrukcije 36cm**

Framax-Bockschraube 36cm

0,62 580505000

pocinkovano

Framax-potisna ploča 6/15

Framax-Druckplatte 6/15

0,80 588183000

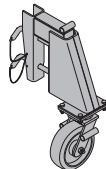
pocinkovano

Nasadni točkić 200

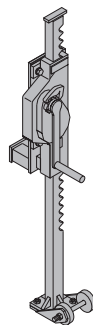
Ansteckrolle 200

19,3 580538000lakirano u plavo
visina: 38 cm**Nasadni točkić 250**

Ansteckrolle 250

47,0 580537000lakirano u plavo
visina: 78 cm**Čekrk sa transportnim valjkom**

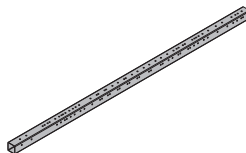
Hubwinde mit Transportroller

37,0 580541000lakirano u plavo
visina: 127 cm
Pridrđavajte se uputstva za
upotrebu!

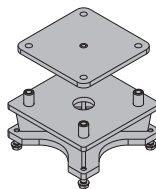
CE

Vodica F 2,00m prednja

Verfahrprofil F 2,00m vorne

180,0 582925000pocinkovano
dužina: 600 cm**Spojnica za točak F 2,00m prednja**

Radanschluss F 2,00m vorne

33,7 582926000pocinkovano
dužina: 30 cm
širina: 30 cm
visina: 16,5 cm**Čeljust spone F 2,00m**

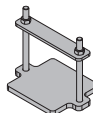
Klemmbacke F 2,00m

0,82 582927000pocinkovano
dužina: 12,5 cm**Ploča spone F 2,00m**

Klemmplatte F 2,00m

3,5 582928000pocinkovano
dužina: 24 cm**Srednja ploča F 2,00m**

Zwischenplatte F 2,00m

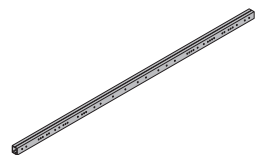
6,0 582929000pocinkovano
dužina: 25 cm
širina: 18 cm

[kg] br.art.

Vođica F 2,00m zadnja

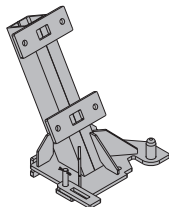
Verfahrprofil F 2,00m hinten

187,5 582930000

pocinkovano
dužina: 574 cm**Spojnicica za točak F 2,00m zadnja**

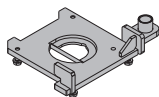
Radanschluss F 2,00m hinten

44,5 582931000

pocinkovano
visina: 61,5 cm**Vežna ploča F 2,00m**

Anschlussplatte F 2,00m

15,8 582932000

pocinkovano
dužina: 44,1 cm
širina: 35,7 cm**Ploča za fiksiranje F 2,00m**

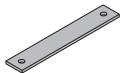
Schraubplatte F 2,00m

2,9 582933000

pocinkovano
dužina: 20 cm**Vežna ploča F 2,00m**

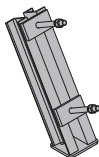
Verbindungsplatte F 2,00m

2,3 582934000

pocinkovano
dužina: 42 cm**Konzola za podizanje F 2,00m zadnja**

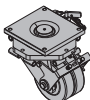
Hubkonsole F 2,00m hinten

14,0 582935000

pocinkovano
visina: 48,6 cm**Točak za veliko opterećenje 90kN**

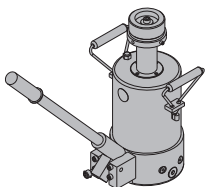
Schwerlastrad 90kN

85,0 582921000

pocinkovano
visina: 38 cm**Redukcioni cilindar SL-1 250kN**

Absenkyzylinder SL-1 250kN

27,2 582870000

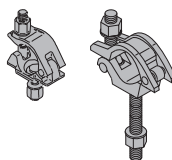
lakirano u plavo
visina: 28-56 cm
Pridržavajte se uputstva za
upotrebu!**Spojnicica sa zavrtnjem 48mm 50**

Spojnicica sa zavrtnjem 48mm 95

Anschraubkupplung

0,84 682002000

0,88 586013000

pocinkovano
veličina ključa: 22 mm
Pridržavajte se uputstva za ugradnju!**Okretna spojnicica 48mm**

Drehkupplung 48mm

1,5 582560000

pocinkovano
veličina ključa: 22 mm
Pridržavajte se uputstva za ugradnju!**Cev skele 48,3mm 0,50m**

Cev skele 48,3mm 1,00m

Cev skele 48,3mm 1,50m

Cev skele 48,3mm 2,00m

Cev skele 48,3mm 2,50m

Cev skele 48,3mm 3,00m

Cev skele 48,3mm 3,50m

Cev skele 48,3mm 4,00m

Cev skele 48,3mm 4,50m

Cev skele 48,3mm 5,00m

Cev skele 48,3mm 5,50m

Cev skele 48,3mm 6,00m

Cev skele 48,3mmm

Gerüstrohr 48,3mm

1,7 682026000

3,6 682014000

5,4 682015000

7,2 682016000

9,0 682017000

10,8 682018000

12,6 682019000

14,4 682021000

16,2 682022000

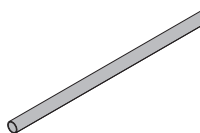
18,0 682023000

19,8 682024000

21,6 682025000

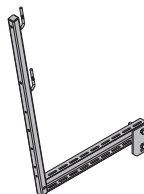
3,6 682001000

pocinkovano

**Pristupna platforma sa vijcima MF75**

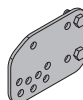
Anschraubbühne MF75

19,0 580669000

pocinkovano
dužina: 113 cm
visina: 152 cm**Vežna ploča MF**

Schwenkplatte MF

4,5 580672000

pocinkovano
dužina: 29 cm
visina: 20 cm**Zavoj za kransko uže 3,50m**

Kranseilschlaufe 3,50m

8,8 580461000

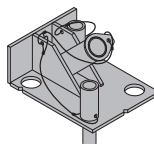
prečnik: 16 cm
Pridržavajte se uputstva za
upotrebu!

CE

Ispitni nosač za kosi anker 15,0/20,0

Prüfbock für Schräganker 15,0/20,0

13,5 580514000

pocinkovano
dužina: 32 cm
širina: 25 cm
visina: 19 cm

[kg] br.art.

[kg] br.art.

Univerzalna kutija za alat 15,0

Universal-Werkzeugbox 15,0

Obuhvaćeno isporukom:

(A) Ključ sa mehanizmom 1/2"

pocinkovano

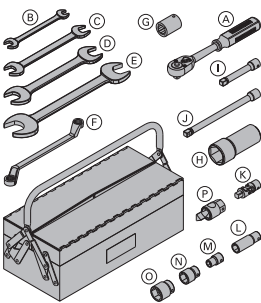
dužina: 30 cm

(B) Viljuškasti ključ 13/17**(C) Viljuškasti ključ 22/24****(D) Viljuškasti ključ 30/32****(E) Viljuškasti ključ 36/41****(F) Okasti ključ 17/19****(G) Četvorougaona navrtka 22****(H) Čevasti ključ 41****(I) Nastavak 11cm 1/2"****(J) Nastavak 22cm 1/2"****(K) Kardanski zglobov****(L) Nasadni ključ 19 1/2" L****(M) Nasadni ključ 13 1/2"****(N) Nasadni ključ 24 1/2"****(O) Nasadni ključ 30 1/2"****(P) Ključ pozicionog konusa 15,0 DK**

pocinkovano

dužina: 8 cm

veličina ključa: 30 mm



9,1 580392000

0,73 580580000

0,08 580577000

0,22 580587000

0,80 580897000

1,0 580586000

0,27 580590000

0,31 580589000

0,99 580585000

0,20 580581000

0,31 580582000

0,16 580583000

0,16 580598000

0,06 580576000

0,12 580584000

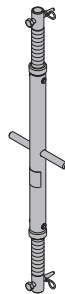
0,20 580575000

0,30 580579000

Vretenasti podupirač T6 100/150cm

Spindelstrebe T6 100/150cm

pocinkovano

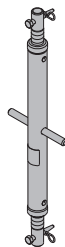


12,5 584323000

Vretenasti podupirač T7 100/150cm

Spindelstrebe T7 100/150cm

pocinkovano



16,8 584309000

Vretenasti podupirač T7 200/250cm

Spindelstrebe T7 200/250cm

pocinkovano



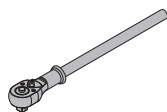
26,2 584325000

Ključ sa mehanizmom 3/4"

Umschaltknarre 3/4"

pocinkovano

dužina: 50 cm



1,5 580894000

Nasadni ključ 46 3/4"

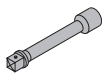
Stecknuss 46 3/4"

0,70 580512000

**Nastavak 20cm 3/4"**

Verlängerung 20cm 3/4"

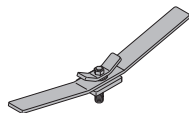
0,68 580683000

**Konusni ključ 20,0**

Konusschlüssel 20,0

pocinkovano

dužina: 57 cm



3,5 581471000

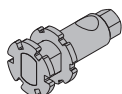
Alat za demontažu štelujućeg konusa

Lösewerkzeug Freistellkonus

pocinkovano

dužina: 10,7 cm

veličina ključa: 24 mm



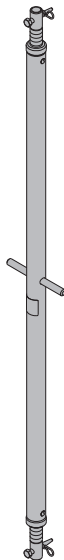
0,67 581864000

[kg] br.art.

Vretenasti podupirač T7 250/300cm

Spindelstrebe T7 250/300cm

pocinkovano



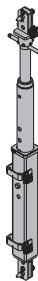
29,4 584326000

[kg] br.art.

Vretenasti podupirač SL-1 T16 140/225cm

Spindelstrebe SL-1 T16 140/225cm

pocinkovano



87,8 582872000

Vretenasti podupirač SL-1 T16 220/375cm

Spindelstrebe SL-1 T16 220/375cm

pocinkovano

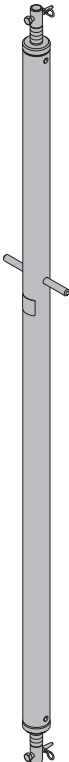


123,0 582874000

Vretenasti podupirač T10 350/400cm

Spindelstrebe T10 350/400cm

pocinkovano

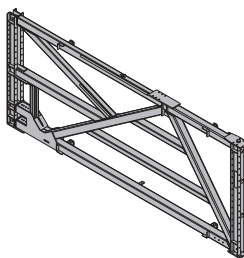


57,5 584328000

Dogradni ram F 2,40m

Anbaurahmen F 2,40m

lakirano u plavo
dužina: 576 cm

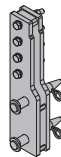


1107,0 582901000

Nastavna spona F 2,40m

Aufstocklasche F 2,40m

lakirano u plavo
visina: 63,5 cm

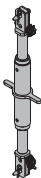


32,5 582902000

Vretenasti podupirač SL-1 T16 100/140cm

Spindelstrebe SL-1 T16 100/140cm

pocinkovano

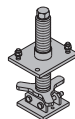


54,1 582871000

Vreteno za dogradni ram F 2,40m

Spindel für Anbaurahmen F 2,40m

pocinkovano
visina: 47,5 cm

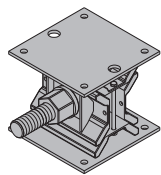


20,1 582903000

[kg] br.art.

Redukcioni klin 1000kN

Absenkeil 1000kN

53,5 582905000lakirano u plavo
visina: 19,2 - 27,2 cm**Okasti ključ 80**

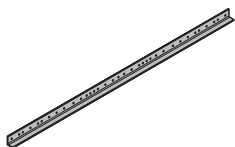
Ringschlüssel 80

3,8 582906000pocinkovano
dužina: 62,4 cm**Profil poprečne spone 2,95m**

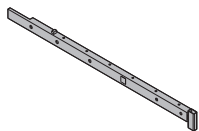
Verschwerungsprofil 2,95m

42,5 582907000

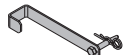
lakirano u plavo

**Profil platforme 1,00m za potporno postolje**

Bühnenprofil 1,00m für Abstützbock

10,7 582908000pocinkovano
dužina: 147,5 cm**Osiguranje izvoda za profil platforme**

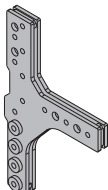
Auszugsicherung für Bühnenprofil

1,7 582909000pocinkovano
dužina: 38,4 cm**Zaštitna ograda 1,00m**

Geländer 1,00m

3,8 584335000pocinkovano
dužina: 124 cm**T-spojnica za potporno postolje**

T-Lasche für Abstützbock

29,8 582910000lakirano u plavo
dužina: 74,6 cm**Bolca za spajanje SL-1 D32 100**

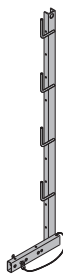
Verbindungsbolzen SL-1 D32 100

1,0 582885000pocinkovano
dužina: 17 cm**Nasadna zaštitna ograda T 1,80m**

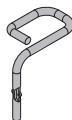
Einschubgeländer T 1,80m

17,7 584373000

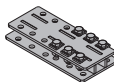
pocinkovano

**Držać nogobrana T 1,80m**

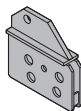
Fußwehrhalter T 1,80m

0,53 584392000pocinkovano
visina: 13,5 cm**Vezna prirubnica za potporno postolje**

Zwischenflansch für Abstützbock

16,2 582911000lakirano u plavo
dužina: 42,7 cm**Oslanjajuće podnožje WU16**

Stützschuh WU16

8,3 582912000lakirano u plavo
dužina: 26,5 cm**Potisno podnožje T7/T16**

Druckschuh T7/T16

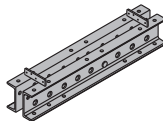
18,5 582913000lakirano u plavo
visina: 72,5 cm**Višenamenski pojas SL-1 WU16 1,00m**

Višenamenski pojas SL-1 WU16 3,00m

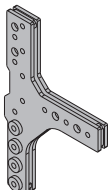
35,0 582877000**107,0 582888000**

Mehrzweckriegel SL-1

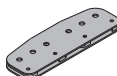
lakirano u plavo

**T-spojnica za potporno postolje**

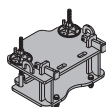
T-Lasche für Abstützbock

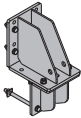
29,8 582910000lakirano u plavo
dužina: 74,6 cm**Spojni element pojasa SL-1 WU16 0,75m**

Riegelverbinder SL-1 WU16 0,75m

31,0 582886000pocinkovano
dužina: 75 cm**Spojnica za točak F 2,40m**

Radanschluss F 2,40m

45,0 582922000pocinkovano
dužina: 49 cm
širina: 36 cm
visina: 25 cm

Konzola vođice F 2,40m
Verfahrprofil-Konsole F 2,40m**31,0 582924000**

pocinkovano
dužina: 28,5 cm
širina: 22 cm
visina: 48,2 cm

Doka sigurnosni sistemi



Informacije o radnim i zaštitnim platformama, sistemima zaštitnih ograda i sistemima za penjanje naći ćete u poglavlju "Doka sigurnosni sistemi".