

[kg] Art. nr.

[kg] Art. nr.

Motstøpsbukk variabel 3,30m
Support. construction frame "Variable" 3.30m

187,8 580516000

Streklask
Tension plate

2,5 580534000

Består av:

(A) **Motstøpsbjelke WU14**

Blålakkert
Høyde: 252 cm

99,0 580510000



Blålakkert
Lengde: 19 cm

(B) **Multifunksjonsbjelke WS10 Top50 2,00m**

Blålakkert

38,9 580007000

Multifunksjonsbjelke WS10 Top50 1,00m

19,6 580003000

(C) **Streklask**

Blålakkert
Lengde: 19 cm

2,5 580534000

Multifunksjonsbjelke WS10 Top50 1,75m

35,0 580006000

(D) **Støttesko**

Blålakkert
Lengde: 28 cm

9,5 580532000

Multifunksjonsbjelke WS10 Top50 2,00m

38,9 580007000

(E) **Koblingsbolt 10cm**

Galvanisert
Lengde: 14 cm

0,34 580201000

Multifunksjonsbjelke WS10 Top50 2,50m

48,7 580009000

(F) **Fjærsplint 5mm**

Galvanisert
Lengde: 13 cm

0,05 580204000

Multifunksjonsbjelke WS10 Top50 2,75m

54,2 580010000

(G) **Spindelstøtte 12 3,00m**

Blålakkert
Lengde: 201 - 234 cm

32,0 580521000

Multifunksjonsbjelke WS10 Top50 3,00m

60,2 580011000

(H) **Rørkobling med bolt 48mm 50**

Galvanisert
Nøkkelåpning: 22 mm

0,84 682002000

Multifunksjonsbjelke WS10 Top50 3,50m

68,4 580012000

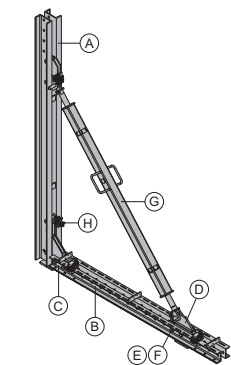
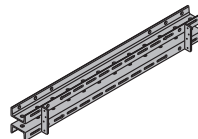
Overhold monteringsveiledningen!

Blålakkert

Multi-purpose waling WS10 Top50

79,4 580013000

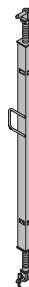
Blålakkert

**Spindelstøtte 12 3,00m**

Spindle strut 12 3.00m

32,0 580521000

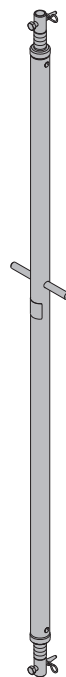
Blålakkert
Lengde: 201 - 234 cm

**Spindelstøtte T7 305/355cm**

Spindle strut T7 305/355cm

35,0 584327000

Galvanisert

**Motstøpsbjelke WU14**

Waling WU14 for supporting construction frame

99,0 580510000

Består av:

(A) **Motstøpsprofil WU14**

Blålakkert
Høyde: 250 cm

81,0 580509000

(B) **Trykksko**

Blålakkert
Høyde: 32 cm

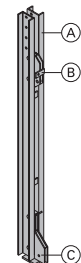
6,2 580531000

(C) **Forankringssko**

Blålakkert
Høyde: 51 cm

12,0 580533000

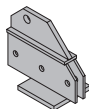
Blålakkert
Høyde: 252 cm

**Støttesko**

Supporting shoe

9,5 580532000

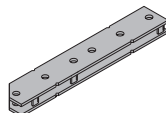
Blålakkert
Lengde: 28 cm

**Elementlask FF20/50 Z**

Formwork element connector FF20/50 Z

6,0 587533000

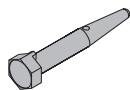
Blålakkert
Lengde: 55 cm



[kg] Art. nr.

Koblingsbolt 10cm

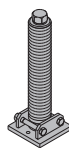
Connecting pin 10cm

Galvanisert
Lengde: 14 cm

0,34 580201000

Motstøpsbukkspindel bak

Rear spindle for supp. construction frame



Galvanisert

18,3 580515000

Fjærsplint 5mm

Spring cotter 5mm

Galvanisert
Lengde: 13 cm

0,05 580204000

Anker bjelke 0,70m

Anker bjelke 1,95m

Anker bjelke 2,95m

Anchor waling

27,0 580517000

76,3 580545000

110,0 580546000

Blålakkert

Motstøpsbukk universal F 4,50m

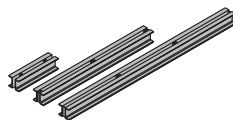
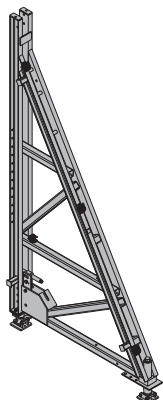
Supporting construct. frame Universal F 4.50m

Blålakkert

Lengde: 196 cm

Høyde: 365 - 394 cm

306,0 580500000

**Multifunksjonsbjelke WU12 Top50 2,00m**

Multifunksjonsbjelke WU12 Top50 3,00m

Multi-purpose waling WU12 Top50

50,0 580022000

75,7 580024000

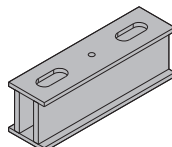
Blålakkert

Ankerprofil 0,55m

Anchoring profile 0.55m

44,5 582904000

Blålakkert

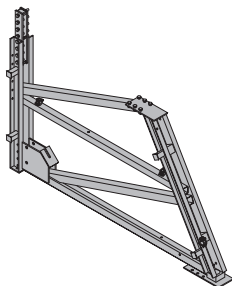
**Påbygggramme F 1,50m**

Attachable frame F 1.50m

Blålakkert

Lengde: 280 cm

236,0 580502000

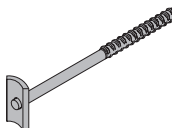
**Ankerbjelkeholder**

Anchor waling positioner

0,62 580539000

Galvanisert

Lengde: 31 cm

**Hjørnelask supporting constr. frame**

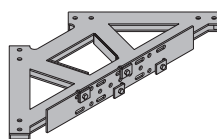
Corner plate supporting constr. frame

44,4 580518000

Blålakkert

Lengde: 92 cm

Bredde: 92 cm

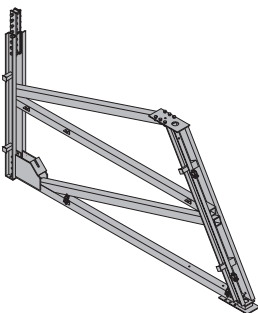
**Påbygggramme F 2,00m**

Attachable frame F 2.00m

Blålakkert

Lengde: 394 cm

451,0 580501000

**Fasadebjelke WS10 2,50m**

Facade waling WS10 2.50m

50,0 580692000

Blålakkert

**Framax adapter F 20cm**

Supporting construction distancer 20cm

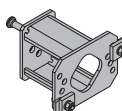
9,4 580519000

Galvanisert

Lengde: 25 cm

Bredde: 19 cm

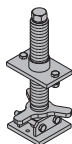
Høyde: 20 cm

**Motstøpsbukkspindel forran**

Front spindle for supp. construction frame

Galvanisert

8,5 580508000



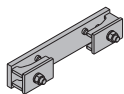
[kg] Art. nr.

[kg] Art. nr.

Klemme for distanse 20cm

Clamp for supp. constr. distancer 20cm

5,0 582920000

Galvanisert
Lengde: 36 cm
Bredde: 7 cm**Transporthjul 200**

Attachable roller 200

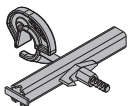
19,3 580538000

Blålakkert
Høyde: 38 cm**Bjelke-til-konsoll holder 9-15cm**

Waling-to-bracket holder 9-15cm

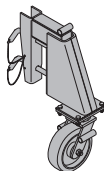
2,7 580625000

Galvanisert

**Transporthjul 250**

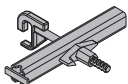
Attachable roller 250

47,0 580537000

Blålakkert
Høyde: 78 cm**Bjelke-til-konsoll holder**

Waling-to-bracket holder

2,5 580526000

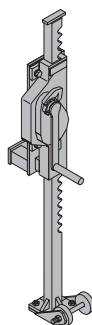
Galvanisert
Lengde: 26 cm
Høyde: 31 cm**Winch med transporthjul**

Winch with transport device

37,0 580541000

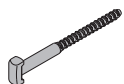
Blålakkert
Høyde: 127 cm
Observer bruksveiledningen!

CE

**Framax universalbolt 10-16cm**

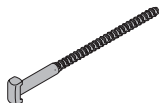
Framax universal fixing bolt 10-16cm

0,60 588158000

Galvanisert
Lengde: 26 cm**Framax universalbolt 10-25cm**

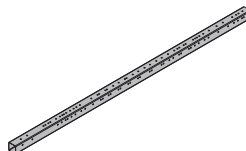
Framax universal fixing bolt 10-25cm

0,69 583002000

Galvanisert
Lengde: 36 cm**Flyttebrakett F 2,00m forran**

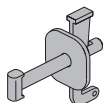
Travelling profile F 2.00m front

180,0 582925000

Galvanisert
Lengde: 600 cm**Framax spennklemme**

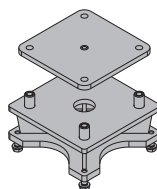
Framax wedge clamp

1,5 588152000

Galvanisert
Lengde: 21 cm**Hjulfeste F 2,00m forran**

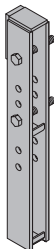
Wheel connector F 2.00m front

33,7 582926000

Galvanisert
Lengde: 30 cm
Bredde: 30 cm
Høyde: 16,5 cm**Framax påbyggingslask**

Framax supporting construct. frame connector

15,0 580506000

Blålakkert
Høyde: 77 cm**Klemmkjeve F 2,00m**

Clamping jaw F 2.00m

0,82 582927000

Galvanisert
Lengde: 12,5 cm**Framax rammebolt 36cm**

Framax supporting construct. frame bolt 36cm

0,62 580505000

Galvanisert

**Klemmplate F 2,00m**

Clamping plate F 2.00m

3,5 582928000

Galvanisert
Lengde: 24 cm**Framax trykkplate 6/15**

Framax pressure plate 6/15

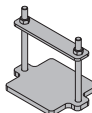
0,80 588183000

Galvanisert

**Mellomplate F 2,00m**

Intermediate plate F 2.00m

6,0 582929000

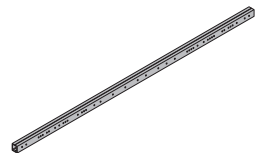
Galvanisert
Lengde: 25 cm
Bredde: 18 cm

[kg] Art. nr.

Flyttebrakett F 2,00m bak

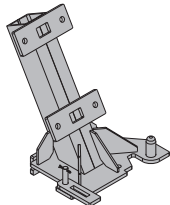
Travelling profile F 2.00m rear

187,5 582930000

Galvanisert
Lengde: 574 cm**Hjulfeste F 2,00m bak**

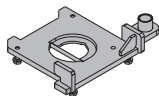
Wheel connector F 2.00m rear

44,5 582931000

Galvanisert
Høyde: 61,5 cm**Koblingsplate F 2,00m**

Connection plate F 2.00m

15,8 582932000

Galvanisert
Lengde: 44,1 cm
Bredde: 35,7 cm**Festeplate F 2,00m**

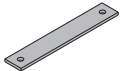
Bolting plate F 2.00m

2,9 582933000

Galvanisert
Lengde: 20 cm**Forbindelsesplate F 2,00m**

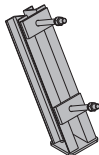
Connector plate F 2.00m

2,3 582934000

Galvanisert
Lengde: 42 cm**Løftebrakett F 2,00m bak**

Lifting bracket F 2.00m rear

14,0 582935000

Galvanisert
Høyde: 48,6 cm**Massivt hjul 90kN**

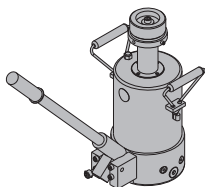
Heavy duty wheel 90kN

85,0 582921000

Galvanisert
Høyde: 38 cm**Jekk SL-1 250kN**

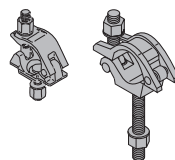
Lowering cylinder SL-1 250kN

27,2 582870000

Blålakkert
Høyde: 28-56 cm
Observer bruksveiledningen!**Rørkobling med bolt 48mm 50**

Screw-on coupler

0,84 682002000

Galvanisert
Nøkkelåpning: 22 mm
Overhold monteringsveiledningen!**Dreiekobling 48mm**

Swivel coupler 48mm

1,5 582560000

Galvanisert
Nøkkelåpning: 22 mm
Overhold monteringsveiledningen!**Stillasrør 48,3mm 0,50m**

Scaffold tube 48.3mm

1,7 682026000

Stillasrør 48,3mm 1,00m

3,6 682014000

Stillasrør 48,3mm 1,50m

5,4 682015000

Stillasrør 48,3mm 2,00m

7,2 682016000

Stillasrør 48,3mm 2,50m

9,0 682017000

Stillasrør 48,3mm 3,00m

10,8 682018000

Stillasrør 48,3mm 3,50m

12,6 682019000

Stillasrør 48,3mm 4,00m

14,4 682021000

Stillasrør 48,3mm 4,50m

16,2 682022000

Stillasrør 48,3mm 5,00m

18,0 682023000

Stillasrør 48,3mm 5,50m

19,8 682024000

Stillasrør 48,3mm 6,00m

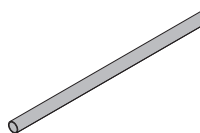
21,6 682025000

Stillasrør 48,3mmm

3,6 682001000

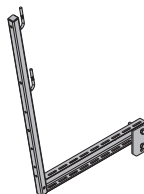
Scaffold tube 48.3mm

Galvanisert

**Støpebrakett MF75**

Screw-on access bracket MF75

19,0 580669000

Galvanisert
Lengde: 113 cm
Høyde: 152 cm**Vinkelplate MF**

Swivel plate MF

4,5 580672000

Galvanisert
Lengde: 29 cm
Høyde: 20 cm**Kran-wire 3,50m**

Crane sling 3.50m

8,8 580461000

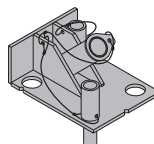
Diameter: 16 cm
Observer bruksveiledningen!

CE

Testbukk for skråstag 15,0/20,0

Testing truss for diagonal anchors 15.0/20.0

13,5 580514000

Galvanisert
Lengde: 32 cm
Bredde: 25 cm
Høyde: 19 cm

[kg] Art. nr.

[kg] Art. nr.

Universal verktøykasse 15,0

Universal tool box 15.0

Inngår som del av leveransen:

(A) Skralle 1/2"

Galvanisert

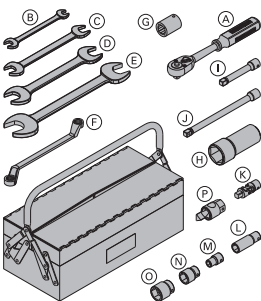
Lengde: 30 cm

(B) Fastnøkkel 13/17**(C) Fastnøkkel 22/24****(D) Fastnøkkel 30/32****(E) Fastnøkkel 36/41****(F) Ringnøkkel 17/19****(G) Koppnøkkel firkant 22****(H) Pipenøkkel 41****(I) Forlenger 11cm 1/2"****(J) Forlenger 22cm 1/2"****(K) Kardangkobling****(L) Koppnøkkel 19 1/2" L****(M) Koppnøkkel 13 1/2"****(N) Koppnøkkel 24 1/2"****(O) Koppnøkkel 30 1/2"****(P) Nøkkel for forløpskonus 15,0 DK**

Galvanisert

Lengde: 8 cm

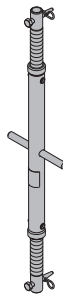
Nøkkelåpning: 30 mm

**9,1 580392000****Spindelstøtte T6 100/150cm**

Spindle strut T6 100/150cm

12,5 584323000

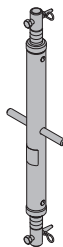
Galvanisert

**0,73 580580000****0,08 580577000****0,22 580587000****0,80 580897000****1,0 580586000****0,27 580590000****0,31 580589000****0,99 580585000****0,20 580581000****0,31 580582000****0,16 580583000****0,16 580598000****0,06 580576000****0,12 580584000****0,20 580575000****0,30 580579000****Spindelstøtte T7 100/150cm**

Spindle strut T7 100/150cm

16,8 584309000

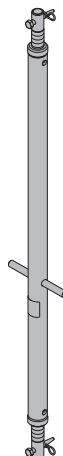
Galvanisert

**Spindelstøtte T7 200/250cm**

Spindle strut T7 200/250cm

26,2 584325000

Galvanisert

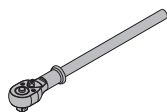
**Skralle 3/4"**

Reversible ratchet 3/4"

1,5 580894000

Galvanisert

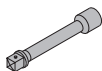
Lengde: 50 cm

**Koppnøkkel 46 3/4"**

Box nut 46 3/4"

0,70 580512000**Forlenger 20cm 3/4"**

Extension 20cm 3/4"

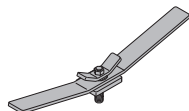
0,68 580683000**Konusnøkkel 20,0**

Cone spanner 20.0

3,5 581471000

Galvanisert

Lengde: 57 cm

**Demonteringsverktøy ankerpunktskonus**

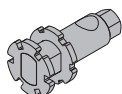
Clearance-cone dismantling tool

0,67 581864000

Galvanisert

Lengde: 10,7 cm

Nøkkelåpning: 24 mm



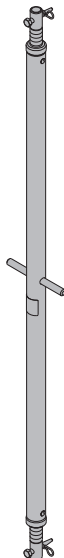
[kg] Art. nr.

Spindelstøtte T7 250/300cm

Spindle strut T7 250/300cm

29,4 584326000

Galvanisert



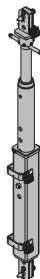
[kg] Art. nr.

Spindelstøtte SL-1 T16 140/225cm

Spindle strut SL-1 T16 140/225cm

87,8 582872000

Galvanisert

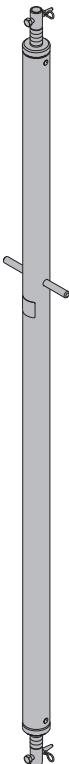


Spindelstøtte T10 350/400cm

Spindle strut T10 350/400cm

57,5 584328000

Galvanisert



Spindelstøtte SL-1 T16 220/375cm

Spindle strut SL-1 T16 220/375cm

123,0 582874000

Galvanisert



Spindelstøtte SL-1 T16 100/140cm

Spindle strut SL-1 T16 100/140cm

54,1 582871000

Galvanisert

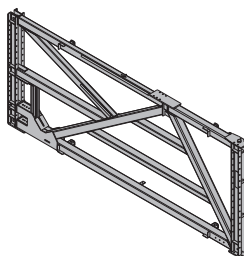


Påbyggramme F 2,40m

Attachable frame F 2.40m

1107,0 582901000

Blålakkert
Lengde: 576 cm

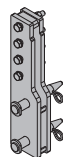


Skjøtelask F 2,40m

Stacking plate F 2.40m

32,5 582902000

Blålakkert
Høyde: 63,5 cm

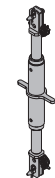


Spindel for påbyggramme F 2,40m

Spindle for attachable frame F 2.40m

20,1 582903000

Galvanisert

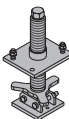


Spindel for påbyggramme F 2,40m

Spindle for attachable frame F 2.40m

20,1 582903000

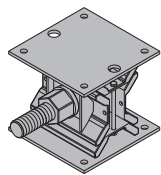
Galvanisert
Høyde: 47,5 cm



[kg] Art. nr.

Senkekile 1000kN

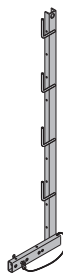
Lowering wedge 1000kN

53,5 582905000Blålakkert
Høyde: 19,2 - 27,2 cm

[kg] Art. nr.

Rekkverkstolpe T 1,80m

Handrail post T 1.80m

17,7 584373000

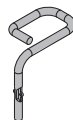
Galvanisert

Ringnøkkel 80

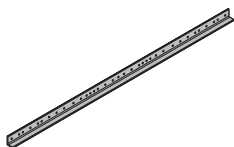
Ring spanner 80

3,8 582906000Galvanisert
Lengde: 62,4 cm**Sparkebordholder T 1,80m**

Toeboard holder T 1.80m

0,53 584392000Galvanisert
Høyde: 13,5 cm**Avsvertingsprofil 2,95m**

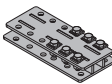
Bracing profile 2.95m

42,5 582907000

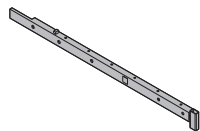
Blålakkert

Mellomflens for motstøpsbukk

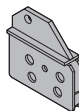
Intermediate flange for supp. constr. frame

16,2 582911000Galvanisert
Høyde: 13,5 cm**Plattformprofil 1,00m for motstøpsbukk**

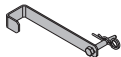
Platform profile 1.00m f. supp. constr. frame

10,7 582908000Galvanisert
Lengde: 147,5 cm**Støttesko WU16**

Supporting shoe WU16

8,3 582912000Blålakkert
Lengde: 26,5 cm**Uttrekkssikring for plattformprofil**

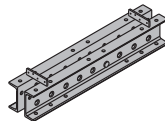
Extension safety clamp for platform profile

1,7 582909000Galvanisert
Lengde: 38,4 cm**Trykksko T7/T16**

Pressure shoe T7/T16

18,5 582913000Blålakkert
Høyde: 72,5 cm**Rekkverk 1,00m**

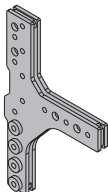
Handrail post 1.00m

3,8 584335000Galvanisert
Lengde: 124 cm**Multifunksjonsbjelke SL-1 WU16 1,00m**Multifunksjonsbjelke SL-1 WU16 3,00m
Multi-purpose waling SL-1**35,0 582877000****107,0 582888000**

Blålakkert

T-lask for motstøpsbukk

T plate for supporting construction frame

29,8 582910000Blålakkert
Lengde: 74,6 cm**Bjelkekobling SL-1 WU16 0,75m**

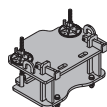
Waling connector SL-1 WU16 0.75m

31,0 582886000Galvanisert
Lengde: 75 cm**Koblingsbolt SL-1 D32 100**

Connecting pin SL-1 D32 100

1,0 582885000Galvanisert
Lengde: 17 cm**Hjulfeste F 2,40m**

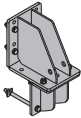
Wheel connector F 2.40m

45,0 582922000Galvanisert
Lengde: 49 cm
Bredde: 36 cm
Høyde: 25 cm

Flyttebrakett F 2,40m

31,0 582924000

Travelling profile bracket F 2.40m



Galvanisert

Lengde: 28,5 cm

Bredde: 22 cm

Høyde: 48,2 cm

Doka sikkerhetssystemer



Du finner arbeidsplattformer, rekkverksystemer og adkomstsystemer under overskriften "Doka Sikkerhetssystemer"