

[kg] broj artikla

[kg] broj artikla

**Podupirač jednostrane opl. varijabilni 3,30m**

Abstützbock Variabel 3,30m

Sastoji se od:

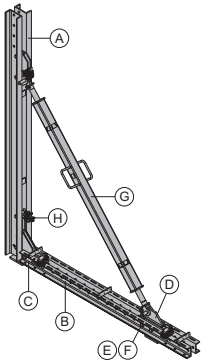
(A) **Nosač podupirača jednostrane oplate WU14** 99,0 580510000plavo lakirano  
visina: 252 cm(B) **Višenamjenski profil WS10 Top50 2,00m** 38,9 580007000

plavo lakirano

(C) **Vlačna spojka** 2,5 580534000plavo lakirano  
duljina: 19 cm(D) **Potporna stopa** 9,5 580532000plavo lakirano  
duljina: 28 cm(E) **Vežni svornjak 10cm** 0,34 580201000pocinčano  
duljina: 14 cm(F) **Rascjepka 5mm** 0,05 580204000pocinčano  
duljina: 13 cm(G) **Potpornjak s vretenom 12 3,00m** 32,0 580521000plavo lakirano  
duljina: 201 - 234 cm(H) **Spojka za pritezanje 48mm 50** 0,84 682002000pocinčano  
veličina ključa: 22 mm

Pridržavajte se uputa za ugradnju!

plavo lakirano

**Vlačna spojka**

Zuglasche

2,5 580534000

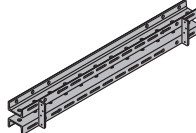
plavo lakirano  
duljina: 19 cm**Višenamjenski profil WS10 Top50 1,00m**

19,6 580003000

**Višenamjenski profil WS10 Top50 1,75m** 35,0 580006000**Višenamjenski profil WS10 Top50 2,00m** 38,9 580007000**Višenamjenski profil WS10 Top50 2,50m** 48,7 580009000**Višenamjenski profil WS10 Top50 2,75m** 54,2 580010000**Višenamjenski profil WS10 Top50 3,00m** 60,2 580011000**Višenamjenski profil WS10 Top50 3,50m** 68,4 580012000**Višenamjenski profil WS10 Top50 4,00m** 79,4 580013000

Mehrzweckriegel WS10 Top50

plavo lakirano

**Potpornjak s vretenom 12 3,00m**

32,0 580521000

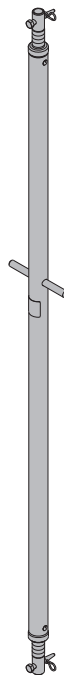
Spindelstrebe 12 3,00m

plavo lakirano  
duljina: 201 - 234 cm**Potpornjak s vretenom T7 305/355cm**

35,0 584327000

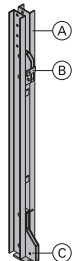
Spindelstrebe T7 305/355cm

pocinčano

**Nosač podupirača jednostrane oplate WU14**

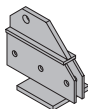
Abstützbockriegel WU14

Sastoji se od:

(A) **Profil podupirača jednostrane oplate WU14** 81,0 580509000plavo lakirano  
visina: 250 cm(B) **Tlačna stopa** 6,2 580531000plavo lakirano  
visina: 32 cm(C) **Sidrena stopa** 12,0 580533000plavo lakirano  
visina: 51 cmplavo lakirano  
visina: 252 cm**Potporna stopa**

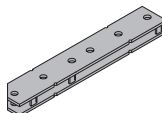
Stützschuh

9,5 580532000

plavo lakirano  
duljina: 28 cm**Vežni element FF20/50 Z**

Elementverbinder FF20/50 Z

6,0 587533000

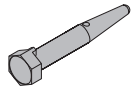
plavo lakirano  
duljina: 55 cm

[kg] broj artikla

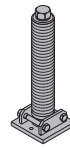
[kg] broj artikla

**Vežni svornjak 10cm**

Verbindungsbolzen 10cm

**0,34 580201000**pocinčano  
duljina: 14 cm**Vreteno podup. jednostrane oplate - stražnje**

Abstützbockspindel hinten

**18,3 580515000**

pocinčano

**Rascjepka 5mm**

Federvorstecker 5mm

**0,05 580204000**pocinčano  
duljina: 13 cm**Sidreni nosač 0,70m**

Sidreni nosač 1,95m

Sidreni nosač 2,95m

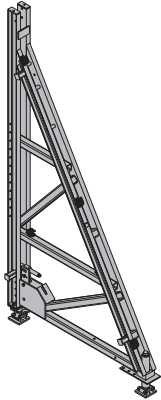
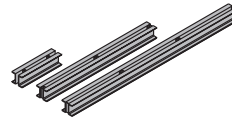
Ankerriegel

**27,0 580517000****76,3 580545000****110,0 580546000**

plavo lakirano

**Podupirač jednostrane oplate univerz. F 4,50m**

Abstützbock-Universal F 4,50m

**306,0 580500000**plavo lakirano  
duljina: 196 cm  
visina: 365 - 394 cm**Višenamjenski profil WU12 Top50 2,00m**

Višenamjenski profil WU12 Top50 3,00m

Mehrzweckriegel WU12 Top50

**50,0 580022000****75,7 580024000**

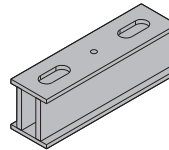
plavo lakirano

**Sidreni profil 0,55m**

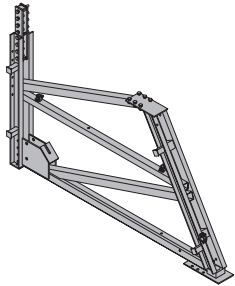
Ankerprofil 0,55m

**44,5 582904000**

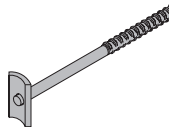
plavo lakirano

**Okvir za nadogradnju F 1,50m**

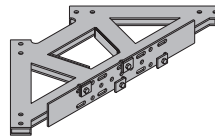
Anbaurahmen F 1,50m

**236,0 580502000**plavo lakirano  
duljina: 280 cm**Vijak sidrenih nosača**

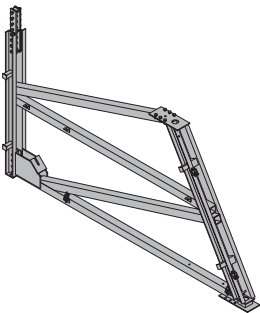
Ankerriegelhalter

**0,62 580539000**pocinčano  
duljina: 31 cm**Kutna spojka podupirača jednostrane oplate**

Ecklasche Abstützbock

**44,4 580518000**plavo lakirano  
duljina: 92 cm  
širina: 92 cm**Okvir za nadogradnju F 2,00m**

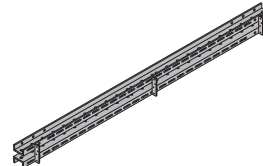
Anbaurahmen F 2,00m

**451,0 580501000**plavo lakirano  
duljina: 394 cm**Fasadni nosač WS10 2,50m**

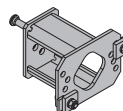
Fassadenriegel WS10 2,50m

**50,0 580692000**

plavo lakirano

**Odstopnik podupirača jednostrane oplate 20cm**

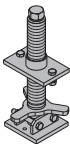
Bockdistanz 20cm

**9,4 580519000**pocinčano  
duljina: 25 cm  
širina: 19 cm  
visina: 20 cm**Vreteno podup. jednostrane oplate - prednje**

Abstützbockspindel vorne

**18,5 580508000**

pocinčano

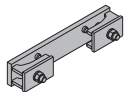


[kg] broj artikla

[kg] broj artikla

**Spojka za odstojnik pod. jednost. oplate 20cm**

Klemme für Bockdistanz 20cm

**5,0 582920000**pocinčano  
duljina: 36 cm  
širina: 7 cm**Montažni kotač 200**

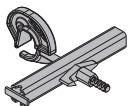
Ansteckrolle 200

**19,3 580538000**plavo lakirano  
visina: 38 cm**Držać profila 9-15cm**

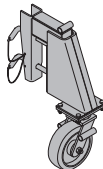
Riegelhalter 9-15cm

**2,7 580625000**

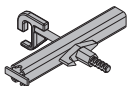
pocinčano

**Montažni kotač 250**

Ansteckrolle 250

**47,0 580537000**plavo lakirano  
visina: 78 cm**Klinasti držać nosača**

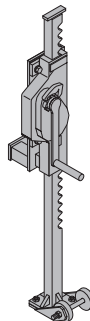
Keilriegelhalter

**2,5 580526000**pocinčano  
duljina: 26 cm  
visina: 31 cm**Vitlo za podizanje s transportnim kotačima**

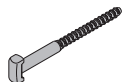
Hubwinde mit Transportroller

**37,0 580541000**plavo lakirano  
visina: 127 cm  
Pridrđavajte se uputa za primjenu!

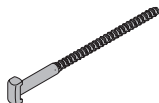
CE

**Framax-univerzalni vijak 10-16cm**

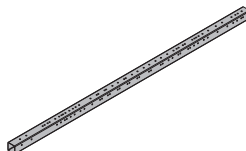
Framax-Universalverbinder 10-16cm

**0,60 588158000**pocinčano  
duljina: 26 cm**Framax-univerzalni vijak 10-25cm**

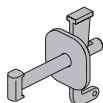
Framax-Universalverbinder 10-25cm

**0,69 583002000**pocinčano  
duljina: 36 cm**Profil za prevoženje F 2,00m prednji**

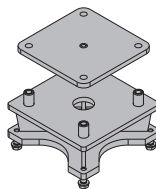
Verfahrprofil F 2,00m vorne

**180,0 582925000**pocinčano  
duljina: 600 cm**Framax-stezna spojka**

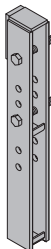
Framax-Spannklemme

**1,5 588152000**pocinčano  
duljina: 21 cm**Priključak kotača F 2,00m prednji**

Radanschluss F 2,00m vorne

**33,7 582926000**pocinčano  
duljina: 30 cm  
širina: 30 cm  
visina: 16,5 cm**Framax-spojka za podupirač jednostrane oplate**

Framax-Bocklasche

**15,0 580506000**plavo lakirano  
visina: 77 cm**Spojna čeljust F 2,00m**

Klemmbacke F 2,00m

**0,82 582927000**pocinčano  
duljina: 12,5 cm**Framax-vijak za podupirač jednostrane oplate**

Framax-Bockschraube 36cm

**0,62 580505000**

pocinčano

**Stezna ploča F 2,00m**

Klemmplatte F 2,00m

**3,5 582928000**pocinčano  
duljina: 24 cm**Framax-podložna pločica 6/15**

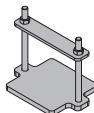
Framax-Druckplatte 6/15

**0,80 588183000**

pocinčano

**Međuploča F 2,00 m**

Zwischenplatte F 2,00m

**6,0 582929000**pocinčano  
duljina: 25 cm  
širina: 18 cm

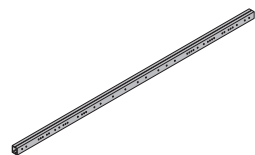
[kg] broj artikla

[kg] broj artikla

**Profil za prevoženje F 2,00m stražnji**

Verfahrprofil F 2,00m hinten

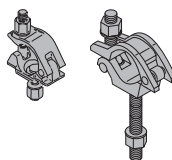
187,5 582930000

pocinčano  
duljina: 574 cm**Spojka za pritezanje 48mm 50**

Anschraubkupplung

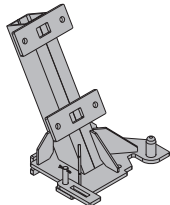
0,84 682002000

0,88 586013000

pocinčano  
veličina ključa: 22 mm  
Pridržavajte se uputa za ugradnju!**Priključak kotača F 2,00m stražnji**

Radanschluss F 2,00m hinten

44,5 582931000

pocinčano  
visina: 61,5 cm**Okretna spojka 48mm**

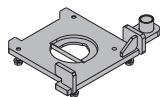
Drehkupplung 48mm

1,5 582560000

pocinčano  
veličina ključa: 22 mm  
Pridržavajte se uputa za ugradnju!**Priključna ploča F 2,00m**

Anschlussplatte F 2,00m

15,8 582932000

pocinčano  
duljina: 44,1 cm  
širina: 35,7 cm**Cijev 48,3mm 0,50m**

1,7 682026000

**Cijev 48,3mm 1,00m**

3,6 682014000

**Cijev 48,3mm 1,50m**

5,4 682015000

**Cijev 48,3mm 2,00m**

7,2 682016000

**Cijev 48,3mm 2,50m**

9,0 682017000

**Cijev 48,3mm 3,00m**

10,8 682018000

**Cijev 48,3mm 3,50m**

12,6 682019000

**Cijev 48,3mm 4,00m**

14,4 682021000

**Cijev 48,3mm 4,50m**

16,2 682022000

**Cijev 48,3mm 5,00m**

18,0 682023000

**Cijev 48,3mm 5,50m**

19,8 682024000

**Cijev 48,3mm 6,00m**

21,6 682025000

**Cijev 48,3mm .....m**

3,6 682001000

Gerüstrohr 48,3mm

**Vijčana ploča F 2,00m**

Schraubplatte F 2,00m

2,9 582933000

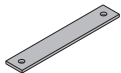
pocinčano  
duljina: 20 cm

pocinčano

**Spojna ploča F 2,00m**

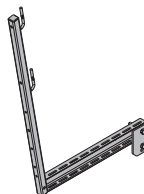
Verbindungsplatte F 2,00m

2,3 582934000

pocinčano  
duljina: 42 cm**Platforma MF75**

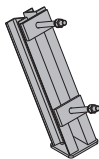
Anschraubbühne MF75

19,0 580669000

pocinčano  
duljina: 113 cm  
visina: 152 cm**Konzola za podizanje F 2,00m stražnja**

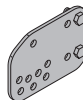
Hubkonsole F 2,00m hinten

14,0 582935000

pocinčano  
visina: 48,6 cm**Zakretna pločica MF**

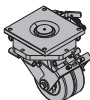
Schwenkplatte MF

4,5 580672000

pocinčano  
duljina: 29 cm  
visina: 20 cm**Kotač za teški teret 90kN**

Schwerlastrad 90kN

85,0 582921000

pocinčano  
visina: 38 cm**Uže za dizalicu 3,50m**

Kranseilschlaufe 3,50m

8,8 580461000

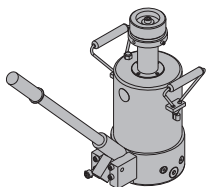
promjer: 16 cm  
Pridržavajte se uputa za primjenu!

CE

**Upuštajući cilindar SL-1 250kN**

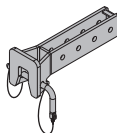
Absenkyzylinder SL-1 250kN

27,2 582870000

plavo lakirano  
visina: 28-56 cm  
Pridržavajte se uputa za primjenu!**Stopa za horiz. ovješenoje podup.jednostr.opl.**

Aufhängeschuh Abstützbock horizontal

11,0 580530000

plavo lakirano  
duljina: 45 cm

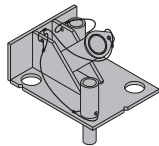
[kg] broj artikla

[kg] broj artikla

**Testni nosač za dijagonalno sidro 15,0/20,0**

Prüfbock für Schräganker 15,0/20,0

13,5 580514000

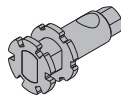


pocinčano  
duljina: 32 cm  
širina: 25 cm  
visina: 19 cm

**Alat za otpuštanje slob. podešavajućeg konusa**

Lösewerkzeug Freistellkonus

0,67 581864000



pocinčano  
duljina: 10,7 cm  
veličina ključa: 24 mm

**Univerzalna kutija s alatom 15,0**

Universal-Werkzeugbox 15,0

Obuhvaćeno isporukom:

9,1 580392000

**(A) Ručka nasadnog ključa 1/2"**

pocinčano

duljina: 30 cm

0,73 580580000

**(B) Viličasti ključ 13/17**

0,08 580577000

**(C) Viličasti ključ 22/24**

0,22 580587000

**(D) Viličasti ključ 30/32**

0,80 580897000

**(E) Viličasti ključ 36/41**

1,0 580586000

**(F) Okasti ključ 17/19**

0,27 580590000

**(G) Četverokutni nasadni ključ 22**

0,31 580589000

**(H) Nasadni ključ 41**

0,99 580585000

**(I) Produžetak 11cm 1/2"**

0,20 580581000

**(J) Produžetak 22cm 1/2"**

0,31 580582000

**(K) Kardanski zglobov**

0,16 580583000

**(L) Nasadna glava za ključ 19 1/2" L**

0,16 580598000

**(M) Nasadna glava za ključ 13 1/2"**

0,06 580576000

**(N) Nasadna glava za ključ 24 1/2"**

0,12 580584000

**(O) Nasadna glava za ključ 30 1/2"**

0,20 580575000

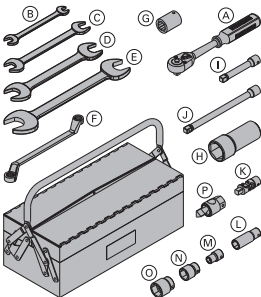
**(P) Ključ 15,0 DK**

pocinčano

duljina: 8 cm

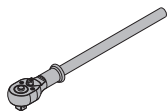
veličina ključa: 30 mm

0,30 580579000

**Ručka nasadnog ključa 3/4"**

Umschaltknarre 3/4"

1,5 580894000



pocinčano  
duljina: 50 cm

**Nasadna glava za ključ 46 3/4"**

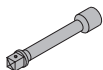
Stecknuss 46 3/4"

0,70 580512000

**Produžetak 20cm 3/4"**

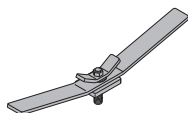
Verlängerung 20cm 3/4"

0,68 580683000

**Ključ za konuse 20,0**

Konusschlüssel 20,0

3,5 581471000



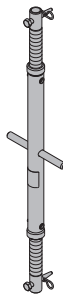
pocinčano  
duljina: 57 cm

**Potpornjak s vretenom T6 100/150cm**

Spindelstrebe T6 100/150cm

12,5 584323000

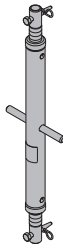
pocinčano

**Potpornjak s vretenom T7 100/150cm**

Spindelstrebe T7 100/150cm

16,8 584309000

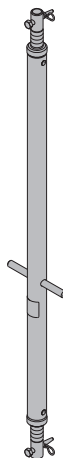
pocinčano

**Potpornjak s vretenom T7 200/250cm**

Spindelstrebe T7 200/250cm

26,2 584325000

pocinčano



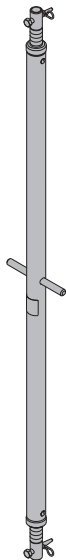
[kg] broj artikla

[kg] broj artikla

**Potpornjak s vretenom T7 250/300cm**  
Spindelstrebe T7 250/300cm

**29,4 584326000**

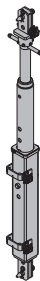
pocinčano



**Potpornjak s vretenom SL-1 T16 140/225cm**  
Spindelstrebe SL-1 T16 140/225cm

**87,8 582872000**

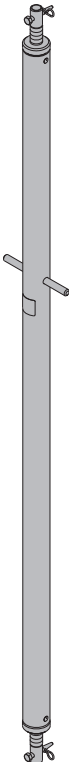
pocinčano



**Potpornjak s vretenom T10 350/400cm**  
Spindelstrebe T10 350/400cm

**57,5 584328000**

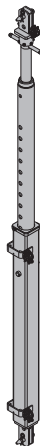
pocinčano



**Potpornjak s vretenom SL-1 T16 220/375cm**  
Spindelstrebe SL-1 T16 220/375cm

**123,0 582874000**

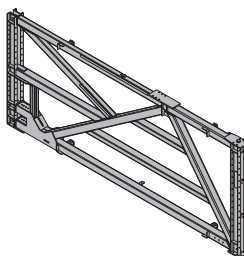
pocinčano



**Okvir za nadogradnju F 2,40m**  
Anbaurahmen F 2,40m

**1107,0 582901000**

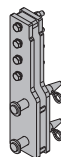
plavo lakirano  
duljina: 576 cm



**Spojka za nadogradnju F 2,40m**  
Aufstocklasche F 2,40m

**32,5 582902000**

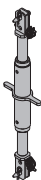
plavo lakirano  
visina: 63,5 cm



**Potpornjak s vretenom SL-1 T16 100/140cm**  
Spindelstrebe SL-1 T16 100/140cm

**54,1 582871000**

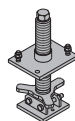
pocinčano



**Vreteno za okvir za nadogradnju F 2,40m**  
Spindel für Anbaurahmen F 2,40m

**20,1 582903000**

pocinčano  
visina: 47,5 cm

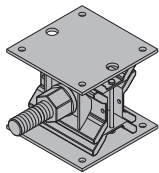


[kg] broj artikla

[kg] broj artikla

**Klin za upuštanje 1000kN**

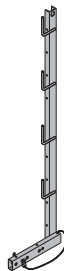
Absenkeil 1000kN

**53,5 582905000**plavo lakirano  
visina: 19,2 - 27,2 cm**Pomična ograda T 1,80m**

Einschubgeländer T 1,80m

**17,7 584373000**

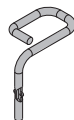
pocinčano

**Okasti ključ 80**

Ringschlüssel 80

**3,8 582906000**pocinčano  
duljina: 62,4 cm**Držac podne rubne zaštite T 1,80m**

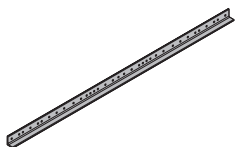
Fußwehrhalter T 1,80m

**0,53 584392000**pocinčano  
visina: 13,5 cm**Potporni profil 2,95m**

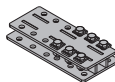
Verschwertungsprofil 2,95m

**42,5 582907000**

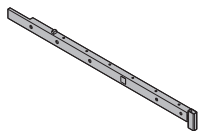
plavo lakirano

**Međuspojka za podup. jednostr. oplate**

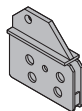
Zwischenflansch für Abstützbock

**16,2 582911000**plavo lakirano  
duljina: 42,7 cm**Platf. prof. 1,00m za podup. jednostr. oplate**

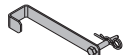
Bühnenprofil 1,00m für Abstützbock

**10,7 582908000**pocinčano  
duljina: 147,5 cm**Potporna stopa WU16**

Stützschuh WU16

**8,3 582912000**plavo lakirano  
duljina: 26,5 cm**Produženi sigur. stezač za profil platforme**

Auszugsicherung für Bühnenprofil

**1,7 582909000**pocinčano  
duljina: 38,4 cm**Tlačna stopa T7/T16**

Druckschuh T7/T16

**18,5 582913000**plavo lakirano  
visina: 72,5 cm**Ograda 1,00m**

Geländer 1,00m

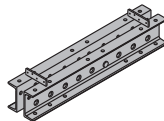
**3,8 584335000**pocinčano  
duljina: 124 cm**Višenamjenski profil SL-1 WU16 1,00m**

Višenamjenski profil SL-1 WU16 3,00m

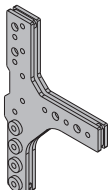
**35,0 582877000****107,0 582888000**

Mehrzweckriegel SL-1

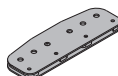
plavo lakirano

**T-spojka za podupirač jednostr.oplate**

T-Lasche für Abstützbock

**29,8 582910000**plavo lakirano  
duljina: 74,6 cm**Spojka za nosače SL-1 WU16 0,75m**

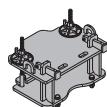
Riegelverbinder SL-1 WU16 0,75m

**31,0 582886000**pocinčano  
duljina: 75 cm**Vežni svornjak SL-1 D32 100**

Verbindungsbolzen SL-1 D32 100

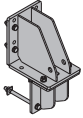
**1,0 582885000**pocinčano  
duljina: 17 cm**Priključak kotača F 2,40m**

Radanschluss F 2,40m

**45,0 582922000**pocinčano  
duljina: 49 cm  
širina: 36 cm  
visina: 25 cm

**Konzola profila za prevoženje F 2,40m**  
Verfahrprofil-Konsole F 2,40m

**31,0 582924000**



pocinčano  
duljina: 28,5 cm  
širina: 22 cm  
visina: 48,2 cm

---

**Doka sigurnosni sustavi**

---



**Radne i zaštitne platforme, zaštita od pada i sustav ljestava potražite u poglavlju "Doka-sigurnosni sustavi"**