

伸缩主梁 1.45-1.65m	65,9	580686000
伸缩主梁 1.65-2.00m	74,3	580687000
伸缩主梁 2.00-2.70m	107,5	580688000
伸缩主梁 2.70-3.80m	156,5	580689000
伸缩主梁 3.80-5.90m	261,0	580690000
Telescopic shaft beam		

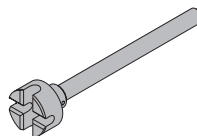
对拉杆扳手 15.0/20.0  
Tie rod wrench 15.0/20.0

1,9 580594000

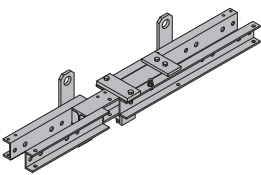
镀锌

长度: 37 cm

直径: 8 cm



镀锌



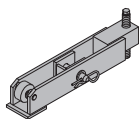
井筒平台用棘爪  
Pawl for shaft platform

18,0 580466000

镀锌

长度: 55 cm

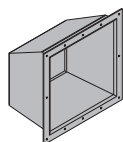
对边宽度: 19 mm



阀锁盒 20x20x15cm  
Box for latch 20x20x15cm

2,6 580608000

蓝色粉末涂层



塞子 15.0  
Plug 15.0

0,006 580609000

无色

直径: 1,9 cm

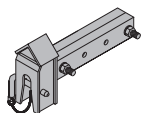


主梁端  
Main beam head

14,9 580464000

蓝色涂漆

长度: 49 cm



工具箱 GF  
Tool box GF

6,5 580390000

包括在供应范围内:

(A) 棘轮扳手 1/2"	0,73	580580000
镀锌 长度: 30 cm		
(B) 开口扳手 13/17	0,08	580577000
(C) 开口扳手 22/24	0,22	580587000
(D) 开口扳手 30/32	0,80	580897000
(E) 梅花双头扳手 17/19	0,27	580590000
(F) 套筒加长杆 11cm 1/2"	0,20	580581000
(G) 套筒加长杆 22cm 1/2"	0,31	580582000
(H) 套筒万向接头	0,16	580583000
(I) 扳手套筒 19 1/2" L	0,16	580598000
(J) 扳手套筒 13 1/2"	0,06	580576000
(K) 扳手套筒 24 1/2"	0,12	580584000
(L) 扳手套筒 30 1/2"	0,20	580575000

