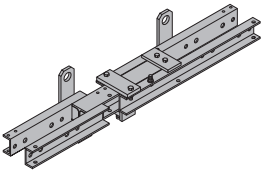


Longarina telescópica 1,45-1,65m	65,9	580686000
Longarina telescópica 1,65-2,00m	74,3	580687000
Longarina telescópica 2,00-2,70m	107,5	580688000
Longarina telescópica 2,70-3,80m	156,5	580689000
Longarina telescópica 3,80-5,90m	261,0	580690000

Telescopic shaft beam

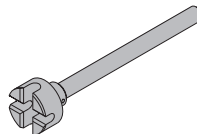
galvanizado

**Chave para ancoragem 15,0/20,0**

Tie rod wrench 15.0/20.0

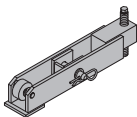
**1,9 580594000**

galvanizado  
comprimento: 37 cm  
diâmetro: 8 cm

**Trinco de plataforma de poço** **18,0 580466000**

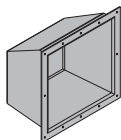
Pawl for shaft platform

galvanizado  
comprimento: 55 cm  
tamanho de chave: 19 mm

**Negativo 20x20x15cm** **2,6 580608000**

Box for latch 20x20x15cm

revestido com pó, azul

**Tampão 15,0** **0,006 580609000**

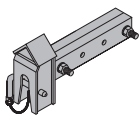
Plug 15.0

transparente  
diâmetro: 1,9 cm

**Cabeça de viga principal** **14,9 580464000**

Main beam head

pintado de azul  
comprimento: 49 cm

**Caixa de ferramentas GF** **6,5 580390000**

Tool box GF

Incluído no volume de fornecimento:

(A) Chave de soquete 1/2"	0,73	580580000
galvanizado		
comprimento: 30 cm		
(B) Chave fixa 13/17	0,08	580577000
(C) Chave fixa 22/24	0,22	580587000
(D) Chave fixa 30/32	0,80	580897000
(E) Chave fixa 17/19	0,27	580590000
(F) Extensão 11cm 1/2"	0,20	580581000
(G) Extensão 22cm 1/2"	0,31	580582000
(H) Cardan	0,16	580583000
(I) Soquete 19 1/2" L	0,16	580598000
(J) Soquete 13 1/2"	0,06	580576000
(K) Soquete 24 1/2"	0,12	580584000
(L) Soquete 30 1/2"	0,20	580575000

