

Ringlock

Product Catalogue



Providing

Table of Contents

3	Table of Contents
4	Declaration of Conformity
5	Ringlock Quality Factors
6	Overview
6	Product Traceability
7	Ringlock node connection
8	Component Identification
9	Color Coded Components
10	Ringlock
10	Base
12	Jacks
13	Rigging Equipment
14	Standards
15	Ledgers
16	Transoms
17	Brackets
18	Bay brace
19	Girders / Spigot adapters
20	Girders
21	Work Platform
22	Planks
23	Toeboards
24	Infill
25	Access & Egrees
26	Steel stair / Aluminium ladder deck
27	Ladder
28	Aluminium platform stair
29	Guardrail / Edge protection
30	Accessories
31	Clamps
33	Adapter clamps
34	Wall ties
35	Tube joiner
36	Miscellaneous

Declaration of Conformity

Ringlock is a modular scaffold system, that enables users to quickly and efficiently erect, use, and dismantle temporary work structures. The Ringlock system is based on the trademarked AT-PAC Ringlock system, which in turn, conforms to European standards BS EN 12810 and BS EN 12811.

Ringlock is also compliant with The National Access & Scaffolding Confederation (NASC) Code of Practice for System Scaffold within the United Kingdom.



Ringlock Quality Factors

All of Doka Euro range of Ringlock products are engineered to meet the highest quality standards based on three simple factors:

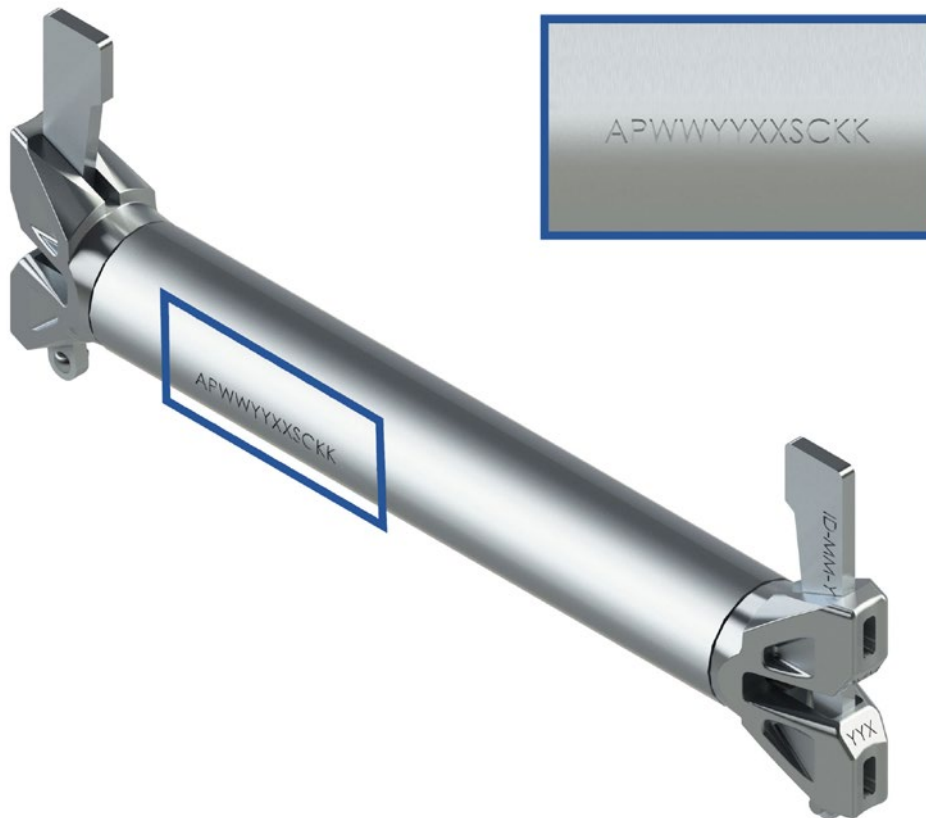
Material	We only use the highest quality steel in our products. Our steel is certified and tested, it conforms to or exceeds industry standards no matter the location or climate.
Fit	Doka products are engineered with versatility and usability in mind. Our modified product designs increase efficiencies and productivity, saving your projects time and money.
Finish	Where applicable, our products are finished and protected by hot-dipped zinc galvanizing. This method of finishing maximizes the utilization and extends the product life.

For additional information on Ringlock system components please consult your local Doka representative.

Overview

Product Traceability

All Doka components are stamped with traceability marks.



Key:

- Batch Number: AP WW YY XX SC KK
- AP AP for AT-PAC
- WW Calendar week
- YY Year of Manufacture
- XX Internal AP PO
- SC Manufacturer ID
- KK Production staff member for welding

Ringlock node connection

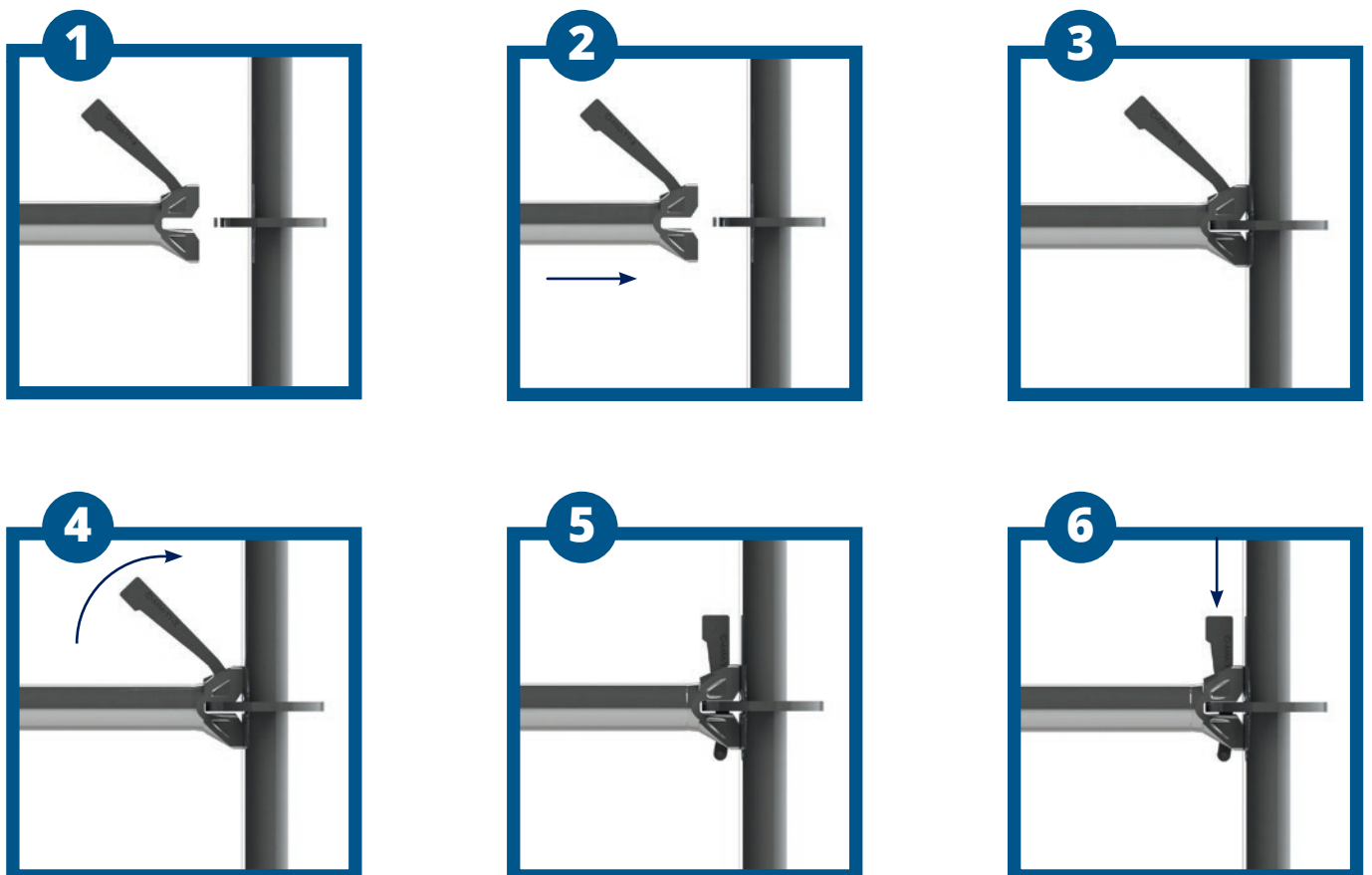
Ringlock node connection consists of Standards with rosettes every 0.5m and horizontal members with a Terminal (Ledger and Transom). When connected together the Ledger ends and rosettes create a very strong connection. It is this connection that transmits forces throughout the scaffold structure.

The Ringlock rosette has a diameter of 123mm and has been manufactured to have 8 holes, 4 of which are small and 4 of which are large. The smaller holes represent the 90 degree angle at which Ledgers and Transoms are fitted. The larger holes accommodate the Diagonal Bay Braces.

The rosette also allows for the Ledgers to be connected into the larger holes. This gives up to 15 degrees of maneuverability in each direction. This provides the ability to move the Ledgers to clear obstacles and create circular scaffolds.

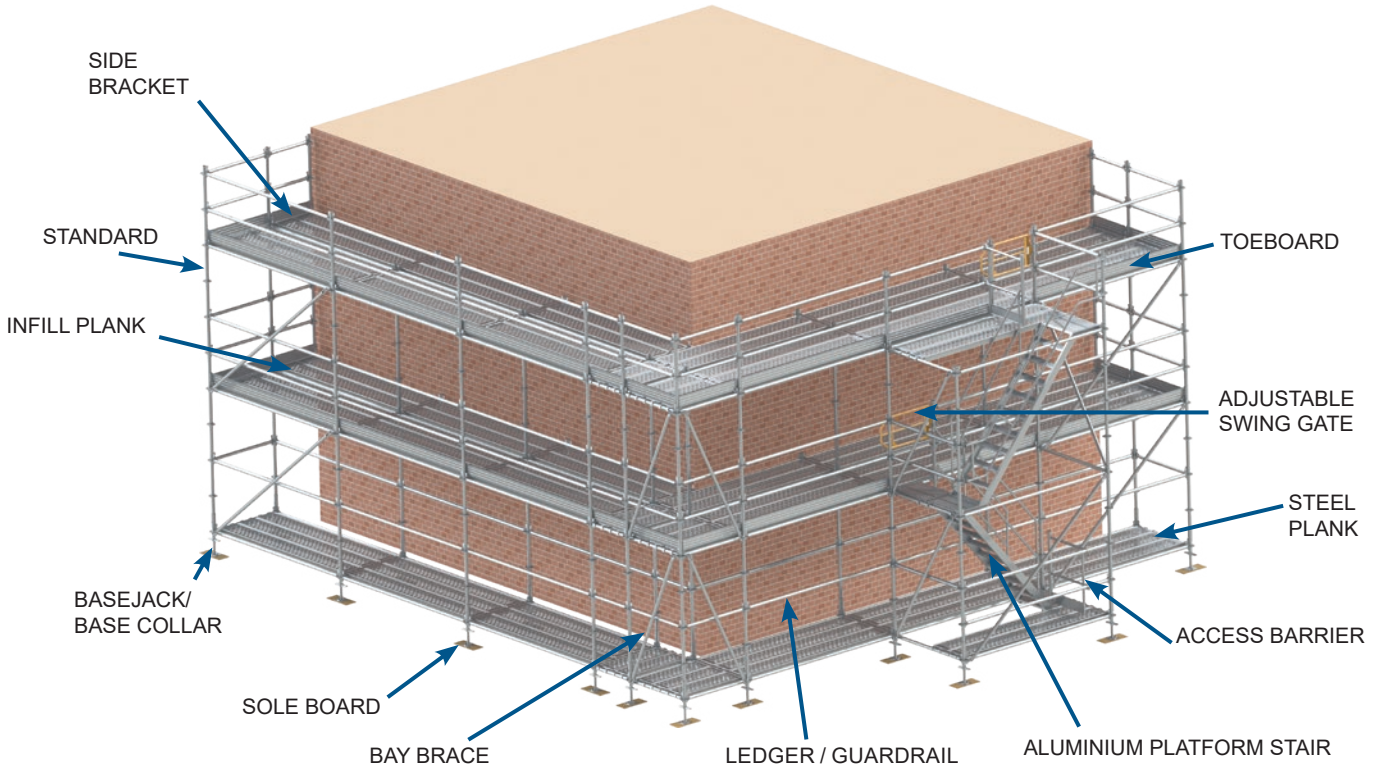
It is recommended that a 500g hammer is used to secure the Ringlock wedge, when the hammer rebounds, the wedge is secure.

To make a connection:



Component Identification

The following diagram represents the most common Ringlock components used. Most scaffold structures are made from these basic components yet the Ringlock system comes with a variety of accessories for all your scaffolding requirements.



The above layout provides a typical arrangement of the Ringlock system and we can provide you with a variety of means of access. These include:

- Ladder Access using Ledger to Plank and Plank to Plank Transoms
- Stair Treads and Stringers to form integral stairs or independent stair towers.
- Aluminium Platform Stairs in one bay.
- All Aluminium Decks with integral ladders.

Color Coded Components

A new feature offered by Doka is the horizontal components manufactured with a colour-coded identification label. This feature allows the scaffolder to easily match particular components for each size of the bay to be erected. (For example: An Orange Ledger 1.57m will work with an Orange Diagonal and an Orange Plank.)



Ringlock

Base

Base jack 60cm

The Base jack is used as a starting base for a scaffold. It is adjustable in height to allow for compensation on uneven surfaces so that a level scaffold is always attainable.

BASE JACK 60cm					
PRODUCT		HEIGHT	WEIGHT	PACKAGING	
CODE	DESCRIPTION	METRES	KG	QTY	TYPE
306010600	Base jack 60cm	0.60	3.7	220	Rack



Swivel base jack 78cm

The Swivel base jack is used as a starting base for a scaffold. It is adjustable in height and angle to allow for compensation on uneven surfaces so that a level scaffold is always attainable.

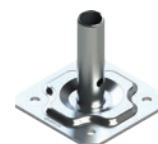
SWIVEL BASE JACK 78cm					
PRODUCT		HEIGHT	WEIGHT	PACKAGING	
CODE	DESCRIPTION	METRES	KG	QTY	TYPE
306030780	Swivel base jack 78cm	0.78	5.6	160	Rack



Base plate system 2" (15cm x 15cm)

The Base plate system 2" (15cm x 15cm) is used as a starting base for a scaffold. A tube can be placed directly onto the spigot located at the center of the Base Plate.

BASE PLATE SYSTEM 2"					
PRODUCT		DIAMETER	WEIGHT	PACKAGING	
CODE	DESCRIPTION	METRES	KG	QTY	TYPE
306042000	Base plate system 2"	1.07	1.1	648	Rack + Insert



Starter base collar

The Starter base collar is the beginning of the Ringlock Scaffolding system. It sits upon a fixed or Adjustable Base.

STARTER BASE COLLAR					
PRODUCT		HEIGHT	WEIGHT	PACKAGING	
CODE	DESCRIPTION	METRES	KG	QTY	TYPE
301270000	Starter base collar	0.301	2.4	385	Rack



Castor wheel 10kN

The Castor wheel is designed to provide mobility to a medium to large size scaffold tower allowing the tower to roll across a flat surface.

CASTOR WHEEL 10KN

PRODUCT		HEIGHT	WEIGHT	PACKAGING	
CODE	DESCRIPTION	METRES	KG	QTY	TYPE
307070100	Castor wheel 10kN	0.249	7.0	144	Rack + Insert



Castor wheel 10kN no srewjack

The Castor wheel 10kN no srew jack is designed to provide mobility to a medium to large size scaffold tower allowing the tower to roll across a flat surface. Using either an adapter or the basejack directly.

CASTOR WHEEL 10KN NO SREWJACK

PRODUCT		WEIGHT	PACKAGING	
CODE	DESCRIPTION	KG	QTY	TYPE
307090100	Castor wheel 10kN no srewjack	5.2	100	Rack + Insert



Note: It is recommended to use components (307080100 or 30601600) as a Ringlock starter base. Using 4x M10 grade 8.8 bolts at 35mm long.

Castor wheel adapter

The Adapter for 0.30m Caster is used as a base connection point to a Caster and provides a base spigot with integrated rosette to base out scaffold.

CASTOR WHEEL ADAPTER

PRODUCT		HEIGHT	WEIGHT	PACKAGING	
CODE	DESCRIPTION	METRES	KG	QTY	TYPE
307080100	Castor wheel adapter	0.25	4.2	144	Rack + Insert



Note: 4x M10 Grade 8.8 bolt. Length: 35mm to attach to Caster.

Heavy duty shoring adapter

The Heavy duty shoring adapter allows the utilization of standard scaffold material to create Heavy Duty Shoring. The Adapter has a Heavy Duty Screwjack and four spigots to accommodate Ringlock Standards.

HEAVY DUTY SHORING ADAPTER

PRODUCT		WEIGHT	PACKAGING	
CODE	DESCRIPTION	KG	QTY	TYPE
329142200	Heavy duty shoring adapter	23.3	25	Rack



Jacks

4 Way screw jack head 60cm

The 4 way screw jack is designed to be installed at the top of a scaffold. Particularly for Shoring applications where one more beams are required to be supported.

4 WAY SCREW JACK HEAD 60cm

PRODUCT		HEIGHT	WEIGHT	PACKAGING	
CODE	DESCRIPTION	METRES	KG	QTY	TYPE
328450600	4 Way screw jack head 60cm	0.6	7.2	160	Rack



Screw jack U head 60cm

The U head is designed to be installed at the top of a scaffold. Particularly for Shoring applications where beams are required to be supported. Alternatively the U head can be used at the base of the scaffold by turning it upside down.

SCREW JACK U HEAD 60cm

PRODUCT		HEIGHT	WEIGHT	PACKAGING	
CODE	DESCRIPTION	METRES	KG	QTY	TYPE
328460600	Screw jack U head 60cm	0.6	6.8	160	Rack



Rigging Equipment

Toggle pin

The Toggle pin is designed to lock two Standards together to resist uplift.

TOGGLE PIN				
PRODUCT		WEIGHT	PACKAGING	
CODE	DESCRIPTION	KG	QTY	TYPE
335030000	Toggle pin	0.07	1000	Bag



Lifting lug

The Lifting lug attaches to the top of a Standard for Hanging Scaffolds and acts as a connection point for rigging. The swiveling eyelet is ensuring that the lug is always in the perfect load position. It also avoids any unwanted twist & tension on the rigging slings.

LIFTING LUG				
PRODUCT		WEIGHT	PACKAGING	
CODE	DESCRIPTION	KG	QTY	TYPE
301520013	Lifting lug SW23	6.9	100	Rack + Insert
301520015	Lifting lug SW21	6.9	100	Rack + Insert

Note: M12 Grade 8.8 Bolt x 60mm & Nut Hardware to be used to secure the Hanging Spigot to the Standard.



Leg lock for suspended scaffold

The Leg lock, used in pairs, is designed to attach to the bottom rosette of the top Standard and to the top rosette of the bottom Standard. This joins the standards together in preparation for suspended or lifted scaffold applications.

LEG LOCK FOR SUSPENDED SCAFFOLD					
PRODUCT		HEIGHT	WEIGHT	PACKAGING	
CODE	DESCRIPTION	METRES	KG	QTY	TYPE
301280000	Leg lock for suspended scaffold	0.50	2.8	268	Rack



Jack retainer (Lifting)

The Jack Retainer (Lifting) is used to secure the Base Jack or Base Collar to the Standard. This is specifically designed to be used when a scaffold is required to be lifted or craned into the location. The Retainer works with and without Base Collar as well as upside down position of the Standard.

JACK RETAINER (LIFTING)				
PRODUCT		WEIGHT	PACKAGING	
CODE	DESCRIPTION	KG	QTY	TYPE
306110003	Jack retainer SW23	3.7	200	Rack+ Insert
306110005	Jack retainer SW21	3.7	200	Rack+ Insert

**Product available in a Nut Size of 21mm (MEA) and 23mm (EAP).



Standards

Standard with crimped spigot

The Standard with crimped spigot is the vertical member of Ringlock scaffolding that utilises a crimped spigot. The Rosettes are located at fixed increments 0.5m for attaching horizontal Transoms/Ledgers and Diagonal Braces.

STANDARD WITH CRIMPED SPIGOT						
PRODUCT		HEIGHT	WEIGHT	PACKAGING		
CODE	DESCRIPTION	METRES	KG	QTY	TYPE	
301010500	Standard 0.50m crimped spigot	0.5	3.2	270	Rack	
301011000	Standard 1.00m crimped spigot	1.0	5.5	180	Rack	
301011500	Standard 1.50m crimped spigot	1.5	7.8	90	Rack	
301012000	Standard 2.00m crimped spigot	2.0	10.1	90	Rack	
301012500	Standard 2.50m crimped spigot	2.5	12.7	90	Rack	
301013000	Standard 3.00m crimped spigot	3.0	14.7	90	Rack	
301014000	Standard 4.00m crimped spigot	4.0	19.3	90	Rack	



Standard hanging no spigot

The Standard hanging no spigot is a vertical member of Ringlock scaffolding. The Standard provides the vertical support for suspended scaffolding and can be also use for shoring.

STANDARD HANGING NO SPIGOT						
PRODUCT		HEIGHT	WEIGHT	PACKAGING		
CODE	DESCRIPTION	METRES	KG	QTY	TYPE	
301790500	Standard 0.5m hanging no spigot	0.5	2.3	270	Rack	
301791000	Standard 1.0m hanging no spigot	1.0	4.6	180	Rack	
301791500	Standard 1.5m hanging no spigot	1.5	6.9	90	Rack	
301792000	Standard 2.0m hanging no spigot	2.0	9.2	90	Rack	
301792500	Standard 2.5m hanging no spigot	2.5	11.5	90	Rack	
301793000	Standard 3.0m hanging no spigot	3.0	13.9	90	Rack	
301794000	Standard 4.0m hanging no spigot	4.0	18.8	90	Rack	
335040000	Spigot for hanging scaffold	N/A	1.2	750	Rack + Insert	



Note: Spigot and bolts sold separately.

Ledgers

Ledger

The Ledger is the horizontal member of Ringlock scaffolding. They provide horizontal support for Ringlock planks. Ledgers can also be used as mid, top and/or hand guard-rail.

LEDGER						
PRODUCTS		LENGTH	WEIGHT	PACKAGING		
CODE	DESCRIPTION	METRES	KG	QTY	TYPE	
301030150	Ledger 0.15m	0.15	1.2	300	Rack	
301030395	Ledger 0.39m	0.39	2.1	300	Rack	
301030735	Ledger 0.73m	0.73	3.3	300	Rack	
301031045	Ledger 1.04m	1.04	4.4	200	Rack	
301031090	Ledger 1.09m	1.09	4.5	200	Rack	
301031405	Ledger 1.40m	1.40	5.6	200	Rack	
301031575	Ledger 1.57m	1.57	6.2	200	Rack	
301032075	Ledger 2.07m	2.07	8.0	150	Rack	
301032575	Ledger 2.57m	2.57	9.8	150	Rack	
301033075	Ledger 3.07m	3.07	11.6	150	Rack	



Truss ledger

Truss ledgers have been value engineered to enable higher service loads to the scaffold than could be applied using traditional Ledgers. The reinforcing tube and stiffener plates support the top tube and provide strength while maintaining lightness.

TRUSS LEDGER						
PRODUCT		LENGTH	WEIGHT	PACKAGING		
CODE	DESCRIPTION	METRES	KG	QTY	TYPE	
301181400	Truss ledger 1.40m	1.40	9.4	63	Rack	
301181575	Truss ledger 1.57m	1.57	10.4	63	Rack	
301182075	Truss ledger 2.07m	2.07	13.8	63	Rack	
301182575	Truss ledger 2.57m	2.57	17.1	63	Rack	
301183075	Truss ledger 3.07m	3.07	20.5	63	Rack	



Transoms

Ledger to plank transom

The Ledger to plank transom is used where a ladder access opening is required on one side of the access platform.

LEDGER TO PLANK TRANSOM					
PRODUCT		LENGTH	WEIGHT	PACKAGING	
CODE	DESCRIPTION	METRES	KG	QTY	TYPE
301233205	Ledger to plank transom 32cm 1B	0.32	3.7	200	Rack + Insert
301236405	Ledger to plank transom 64cm 2B	0.64	4.9	200	Rack
301239605	Ledger to plank transom 96cm 3B	0.96	6.0	200	Rack



Plank to plank transom

Plank to plank transom are used when an opening is required in the middle of a platform, for example a column or pipework that may pass through the working platform.

PLANK TO PLANK TRANSOM					
PRODUCT		LENGTH	WEIGHT	PACKAGING	
CODE	DESCRIPTION	METRES	KG	QTY	TYPE
301243205	Plank to plank transom 32cm 1B	0.32	4.1	170	Rack + Insert
301246405	Plank to plank transom 64cm 2B	0.64	5.3	200	Rack
301249605	Plank to plank transom 96cm 3B	0.96	6.4	200	Rack



Brackets

Side bracket

Side brackets are used to extend the working platform closer to the building structure in cases where the main scaffold cannot be erected directly next to the working face.

SIDE BRACKET						
PRODUCT		WIDTH	WEIGHT	PACKAGING		
CODE	DESCRIPTION	METRES	KG	QTY	TYPE	
301110395	Side bracket 0.39m	0.39	4.8	110	Rack + Insert	
301110735	Side bracket 0.73m	0.73	7.5	50	Rack	



Console bracket

Console brackets are used at the edge of a scaffolding to extend the or widen the working platform.

CONSOLE BRACKET						
PRODUCT		WIDTH	WEIGHT	PACKAGING		
CODE	DESCRIPTION	METRES	KG	QTY	TYPE	
301121090	Console bracket 1.09m	1.09	12.5	24	Rack	



Bay brace

Bay braces are used for the vertical bracing of Ringlock scaffolds. They can also be used as compression and tension members for cantilevers/spurs, transmitting loads back into the main scaffold structure.

BAY BRACE 200cm						
PRODUCT		BAY LENGTH	WEIGHT	PACKAGING		
CODE	DESCRIPTION	METRES	KG	QTY	TYPE	
301060735	Bay brace 200/73cm	0.73	7.2	150	Rack	
301061045	Bay brace 200/104cm	1.04	7.4	150	Rack	
301061090	Bay brace 200/109cm	1.09	7.5	150	Rack	
301061405	Bay brace 200/140cm	1.40	7.9	150	Rack	
301061575	Bay brace 200/157cm	1.57	8.1	150	Rack	
301062075	Bay brace 200/207cm	2.07	9.0	150	Rack	
301062575	Bay brace 200/257cm	2.57	9.9	150	Rack	
301063075	Bay brace 200/307cm	3.07	11.0	150	Rack	



BAY BRACE 150cm						
PRODUCT		BAY LENGTH	WEIGHT	PACKAGING		
CODE	DESCRIPTION	METRES	KG	QTY	TYPE	
301070735	Bay brace 150/73cm	0.73	5.9	150	Rack	
301071045	Bay brace 150/104cm	1.04	6.3	150	Rack	
301071095	Bay brace 150/109cm	1.09	6.4	150	Rack	
301071405	Bay brace 150/140cm	1.40	6.9	150	Rack	
301071575	Bay brace 150/157cm	1.57	7.2	150	Rack	
301072075	Bay brace 150/207cm	2.07	8.2	150	Rack	
301072575	Bay brace 150/257cm	2.57	9.2	150	Rack	
301073075	Bay brace 150/307cm	3.07	10.4	150	Rack	



BAY BRACE 100cm						
PRODUCT		BAY LENGTH	WEIGHT	PACKAGING		
CODE	DESCRIPTION	METRES	KG	QTY	TYPE	
301080735	Bay brace 100/73cm	0.73	4.8	150	Rack	
301081045	Bay brace 100/104cm	1.04	5.3	150	Rack	
301081090	Bay brace 100/109cm	1.09	5.4	150	Rack	
301081405	Bay brace 100/140cm	1.40	6.0	150	Rack	
301081575	Bay brace 100/157cm	1.57	6.3	150	Rack	
301082075	Bay brace 100/207cm	2.07	7.5	150	Rack	
301082575	Bay brace 100/257cm	2.57	8.6	150	Rack	
301083075	Bay brace 100/307cm	3.07	9.9	150	Rack	



Girders / Spigot adapters

Lattice girder no spigot

Lattice Girders are a horizontal member of Ringlock scaffolding that allow for bridging over large spans of 5.14m to 7.71m. They have 50cm depth and are provided with Terminal Wedges to attached directly to the rosette.

LATTICE GIRDER NO SPIGOT						
PRODUCT		LENGTH	WEIGHT	PACKAGING		
CODE	DESCRIPTION	METRES	KG	QTY	TYPE	
301165145	Lattice girder 5.14m no spigot	5.14	55.2	20	Bundle	
301166145	Lattice girder 6.14m no spigot	6.14	64.9	20	Bundle	
301167715	Lattice girder 7.71m no spigot	7.71	82.3	20	Bundle	



Girder spigot adapter clamp

The Girder spigot adapter clamp allow the connection of Ringlock Standards at intermediate locations along the length of Lattice girder no spigot and Girders.

GIRDER SPIGOT ADAPTER CLAMP				
PRODUCT		WEIGHT	PACKAGING	
CODE	DESCRIPTION	KG	QTY	TYPE
305082005	Girder spigot adapter clamp SW21	3.4	500	Rack + Insert
305082003	Girder spigot adapter clamp SW23	3.4	500	Rack + Insert



**Product available in a Nut Size of 21mm (MEA) and 23mm (EAP).

Spigot adapter clamp

The Spigot adapter clamp allow the connection of Ringlock Standards at intermediate locations along the length of Ledgers and Truss Ledgers.

SPIGOT ADAPTER CLAMP				
PRODUCT		WEIGHT	PACKAGING	
CODE	DESCRIPTION	KG	QTY	TYPE
305032005	Spigot adapter clamp-bolt SW21	2.1	650	Rack + Insert
305032003	Spigot adapter clamp-bolt SW23	2.1	650	Rack + Insert



**Product available in a Nut Size of 21mm (MEA) and 23mm (EAP).

Girders

Ladder beam

The Ladder beam 0.45m is designed to be integrated into scaffolds using clamps and can be used to reinforce the scaffold and can span large distances.

LADDER BEAM					
PRODUCT		LENGTH	WEIGHT	PACKAGING	
CODE	DESCRIPTION	METRES	KG	QTY	TYPE
317013350	Ladder beam 3.35m	3.35	41.9	15	Bundle
317014880	Ladder beam 4.88m	4.88	61.0	15	Bundle
317016390	Ladder beam 6.39m	6.39	80.0	15	Bundle



Alum lattice girder beam

The Aluminium lattice girder beam is a horizontal member of Ringlock scaffolding. It is used for bridging over large spans of 3.05m to 8.52m. The beam adaptors can be removed, and spigots slotted into the end of the beam to join beams together to allow for greater spans.

ALUM LATTICE GIRDER BEAM					
PRODUCT		LENGTH	WEIGHT	PACKAGING	
CODE	DESCRIPTION	METRES	KG	QTY	TYPE
320033050	Alum lattice girder beam 50/305cm	3.05	15.7	20	Rack
320034260	Alum lattice girder beam 50/426cm	4.26	21.9	20	Rack
320036390	Alum lattice girder beam 50/639cm	6.39	33.1	20	2 Rack
320038520	Alum lattice girder beam 50/852cm	8.52	44.3	20	2 Rack

Note: M12 Grade 8.8 x 70mm Bolt & Nut Hardware to be used to secure Beams / Adapters.



Alum lattice girder beam joiner

The Alum Lattice Girder Beam Joiner can be used to join two beams together. The beam joiner is 0.5m deep.

ALUM LATTICE GIRDER BEAM JOINER					
PRODUCT		LENGTH	WEIGHT	PACKAGING	
CODE	DESCRIPTION	METRES	KG	QTY	TYPE
320065000	Alum lattice girder beam joiner	0.5	12.9	20	2 Rack



Work Platform



Introduction

Doka provides a range of work platform products for its Ringlock Scaffold. These include Modular Steel Planks 320mm and 190mm wide, Infill Planks 190mm wide, Gap Filler Planks 320mm wide. All work platform products are available in the typical Ringlock Ledger Lengths.

Customers and users can rest assured that, no matter which product they choose, all Doka work platform products are manufactured to stringent quality specifications and go through rigorous testing and checking before being shipped.

Doka work platforms provide a strong, safe working surface no matter what the application.

Doka backs its products with its proprietary Quality Assurance System. This program is designed to ensure that each and every Doka work platform product has been manufactured correctly and functions and performs as it should. This involves continual factory auditing, monitoring, testing, in-process inspections and pre-shipment inspections.

Planks

Steel plank 320mm

Steel planks are used to form the working platform. The number of Steel planks used determines the width of the platform. They span the length of the bay and hook onto the supporting Ledger/Transom. There is an anti-lift system to prevent uplift in adverse weather conditions.

STEEL PLANK 320mm						
PRODUCT		LENGTH	WEIGHT	PACKAGING		
CODE	DESCRIPTION	METRES	KG	QTY	TYPE	
308030735	Steel plank 32/73cm	0.73	6.8	75	Rack	
308031095	Steel plank 32/109cm	1.09	9.1	75	Rack	
308031405	Steel plank 32/140cm	1.40	11.1	75	Rack	
308031575	Steel plank 32/157cm	1.57	12.2	75	Rack	
308032075	Steel plank 32/207cm	2.07	15.4	75	Rack	
308032575	Steel plank 32/257cm	2.57	18.6	75	Rack	
308033075	Steel plank 32/307cm	3.07	22.2	75	Rack	



Steel plank 190mm

Steel planks are used to form the working platform. The number of Steel planks used determines the width of the platform. They span the length of the bay and hook onto the supporting Ledger/Transom. There is an anti-lift system to prevent uplift in adverse weather conditions.

STEEL PLANK 190mm						
PRODUCT		LENGTH	WEIGHT	PACKAGING		
CODE	DESCRIPTION	METRES	KG	QTY	TYPE	
308010735	Steel Plank 19/73cm	0.73	5.0	50	Rack	
308011095	Steel Plank 19/109cm	1.09	6.6	50	Rack	
308011405	Steel Plank 19/140cm	1.40	8.1	50	Rack	
308011575	Steel Plank 19/157cm	1.57	8.9	50	Rack	
308012075	Steel Plank 19/207cm	2.07	11.3	50	Rack	
308012575	Steel Plank 19/257cm	2.57	13.6	50	Rack	
308013075	Steel Plank 19/307cm	3.07	16.2	50	Rack	



Toeboards

Steel toeboard yellow

Steel toeboards yellow are designed to enclose the bay at the Plank level, preventing small tools, debris and other items from falling off the platform.

STEEL TOEBOARD						
PRODUCT		LENGTH	WEIGHT	PACKAGING		
CODE	DESCRIPTION	METRES	KG	QTY	TYPE	
308400395	Steel toeboard yellow 0.39m	0.39	1.7	400	Rack	
308400735	Steel toeboard yellow 0.73m	0.73	2.6	400	Rack	
308401045	Steel toeboard yellow 1.04m	1.04	3.4	400	Rack	
308401095	Steel toeboard yellow 1.09m	1.09	3.5	400	Rack	
308401405	Steel toeboard yellow 1.40m	1.40	4.3	400	Rack	
308401575	Steel toeboard yellow 1.57m	1.57	4.8	400	Rack	
308402075	Steel toeboard yellow 2.07m	2.07	6.1	400	Rack	
308402575	Steel toeboard yellow 2.57m	2.57	7.4	400	Rack	
308403075	Steel toeboard yellow 3.07m	3.07	8.7	400	Rack	



Toe board retaining clamp

The Toe board retaining clamps are used to secure the toeboard from uplift in adverse weather conditions.

TOE BOARD RETAINING CLAMP						
PRODUCTS		LENGTH	WEIGHT	PACKAGING		
CODE	DESCRIPTION	METRES	KG	QTY	TYPE	
304160015	Toe board retaining clamp SW21	0.075	0.74	100	Rack + Insert	
304160013	Toe board retaining clamp SW23	0.075	0.74	100	Rack + Insert	



**Product available in a Nut Size of 21mm (MEA) and 23mm (EAP).

Infill

Infill plank

Infill planks with 19cm are designed to fill any unwanted gaps between Planks or bays providing a continuous working platform.

INFILL PLANK						
PRODUCTS		LENGTH	WEIGHT	PACKAGING		
CODE	DESCRIPTION	METRES	KG	QTY	TYPE	
308070735	Infill plank 0.73m	0.73	2.8	270	Rack	
308071095	Infill plank 1.09m	1.09	4.5	135	Rack	
308071405	Infill plank 1.40m	1.40	6.0	135	Rack	
308071570	Infill plank 1.57m	1.57	7.0	135	Rack	
308072075	Infill plank 2.07m	2.07	9.1	135	Rack	
308072575	Infill plank 2.57m	2.57	11.5	135	Rack	
308073075	Infill plank 3.07m	3.07	13.9	135	Rack	



Gap filler plank

The Gap filler plank is designed to span small openings in the Ringlock platform or between bays.

GAP FILLER PLANK						
PRODUCT		LENGTH	WEIGHT	PACKAGING		
CODE	DESCRIPTION	METRES	KG	QTY	TYPE	
308131005	Gap filler plank 32/100cm	1.00	5.5	72	Rack	
308131505	Gap filler plank 32/150cm	1.50	7.8	72	Rack	
308132005	Gap filler plank 32/200cm	2.00	10.0	72	Rack	
308141005	Gap filler plank 19/100cm	1.00	3.6	120	Rack	
308141505	Gap filler plank 19/150cm	1.50	5.1	120	Rack	
308142005	Gap filler plank 19/200cm	2.00	6.7	120	Rack	
350500000	Rubber plug	N/A	0.02	N/A		



Supplied with Rubber Plug to secure platform.

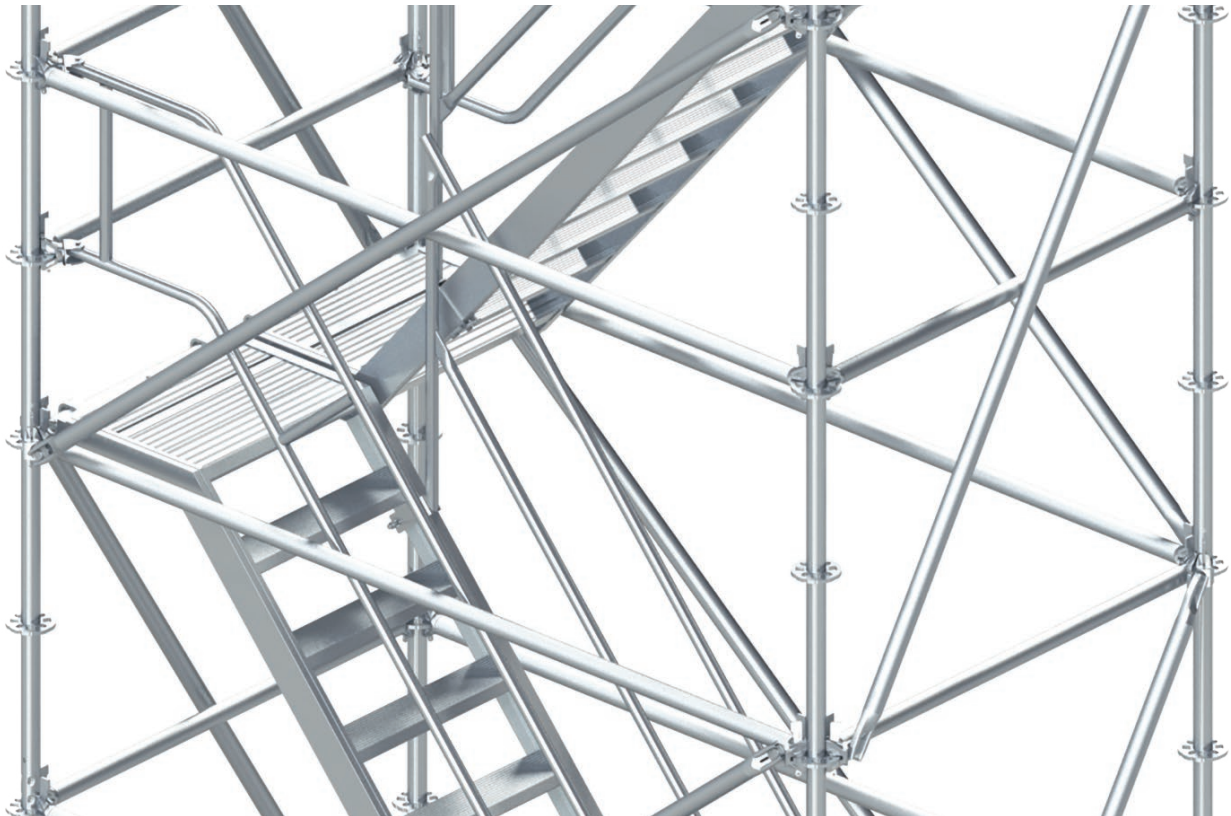
Angular deck 0.73 & Angular deck extension 1.09

The Angular deck is used for circular scaffold applications to close the gap between trapezoidal scaffold bays in order to reduce the need for lapping Wood Planks. Up to 45-degrees of adjustment can be made between bays. It is available at widths of 73cm (2 steel plank wide) and an extension to 1.09m (3 steel plank) wide scaffold.

ANGULAR DECK 0.73 & 1.09 EXTENSION						
PRODUCTS		LENGTH	WEIGHT	PACKAGING		
CODE	DESCRIPTION	METRES	KG	QTY	TYPE	
308410735	Angular deck 0.73	0.73	15.3	50	Rack	
308411093	Angular deck 1.09	1.09	19.2	50	Rack	



Access & Egress



Introduction

Doka has developed a full complement of Access & Egress products for Doka Ringlock and other applications. These products are designed and manufactured in accordance with all applicable standards and provide a level of safety that is unparalleled in the industry. This range of components include Self-closing Safety Gates, Aluminium Platform Stair units, Ringlock Steel Stairs and Access Barriers all built to exacting quality standards and individually checked for compliance and function.

The 10 Leg Steel Stairs are made from separate Steel Stringers and Treads so the system can be installed where access is tight, such as complex refinery installations where pipes and other obstructions prevent large pieces of scaffolding to be used. The landings are constructed from Doka Steel Planks which provide a convenient and anti-slip platform. Doka Ringlock Bay Braces are used as handrails for the stairs.

Doka also offers its clients their newly designed Aluminium Platform Stair units. These are complete stair units with built-in landings. The use of lightweight structural Aluminium for the stair stringers, treads and landings make these units highly manageable and easy to install. They also allow the stair towers to have only 4 legs on plan, making the system very fast and easy to erect.

Steel stair / Aluminium ladder deck

Stair stringer

The Stair stringer is the diagonal member of the 10 Leg Stair System. The Stringer must be used in pairs in order to support the Stair Treads. The Stringer is used for a typical 2.0m lift height.

STEEL STAIR STRINGER						
PRODUCT		BAY LENGTH	WEIGHT	PACKAGING		
CODE	DESCRIPTION	METRES	KG	QTY	TYPE	
315082075	Stair stringer right 200/207	2.07	15.5	108	Rack	
315072075	Stair stringer left 200/207	2.07	15.5	108	Rack	

Note: The Stair Stringers are handed. (**Blue** = Powder coated ledger head left hand, **Yellow** = Powder coated ledger head right hand)



Stair tread 0.89m

The Stair tread is designed as the horizontal member connecting to the Stair stringers, providing the steps of the stair system. This fits into a 1.036m (1.04m) Bay width.

STAIR TREAD 0.89m						
PRODUCT		WIDTH	WEIGHT	PACKAGING		
CODE	DESCRIPTION	METRES	KG	QTY	TYPE	
315020890	Stair tread 0.89m	0.89	8.6	20	Cage	



Alum ladder hatch deck 257cm

The Alum ladder hatch deck 257cm acts as a lightweight, extra wide Scaffold plank which incorporates a Ladder.

ALUM LADDER HATCH DECK 257cm						
PRODUCT		LENGTH	WEIGHT	PACKAGING		
CODE	DESCRIPTION	METRES	KG	QTY	TYPE	
319022575	Alum ladder hatch deck 257cm	2.57	36.0	25	Rack	



Ladder

Alu/ply lateral hatch deck

The Alum/ply ladder hatch deck acts as a lightweight, extra wide Scaffold plank with latter opening self-closing hatch. The sizes 2.07m and 3.07m incorporates a built in ladder, the 1.57m length requires a separate hook on ladder.

ALU/PLY LATERAL HATCH DECK						
PRODUCT		BAY LENGTH	WEIGHT	PACKAGING		
CODE	DESCRIPTION	METRES	KG	QTY	TYPE	
318071575	Alum/ply lateral hatch deck 1.57m	1.57	25.3	25	rack	
318072075	Alum/ply lateral hatch deck 2.07m	2.07	28.2	25	rack	
318072575	Alum/ply lateral hatch deck 2.57m	2.57	31.0	25	rack	
318073075	Alum/ply lateral hatch deck 3.07m	3.07	33.8	25	rack	
318081575	Ladder for hatch deck 1.57m	1.57	6.0	25	rack	



Aluminum ladder

The Aluminum ladder is designed to attach to Ringlock scaffolding using the Ladder Hook Clamp/Clip. The Ladder feet and rungs are offset to allow for safe footing during access and egress.

ALUMINUM LADDER						
PRODUCT		BAY LENGTH	WEIGHT	PACKAGING		
CODE	DESCRIPTION	METRES	KG	QTY	TYPE	
314012400	Aluminium ladder 2.4m	2.40	7.2	25	Bundle	
314013600	Aluminium ladder 3.6m	3.60	10.8	25	Bundle	
314014800	Aluminium ladder 4.8m	4.80	14.4	25	Bundle	
314016000	Aluminium ladder 6.0m	6.00	18.0	25	Bundle	



Steel ladder AS1892

The Steel ladder is designed to attach to Ringlock scaffolding using the Ladder hook Clamp/Clip. The Ladder feet and rungs are offset to allow for safe footing during access and egress.

STEEL LADDER AS1892						
PRODUCT		BAY LENGTH	WEIGHT	PACKAGING		
CODE	DESCRIPTION	METRES	KG	QTY	TYPE	
311090243	Steel ladder AS1892 2.4m	2.40	12.7	25	Rack	
311090363	Steel ladder AS1892 3.6m	3.60	19.2	25	Rack	
311090483	Steel ladder AS1892 4.8m	4.80	25.6	25	Rack	
311090603	Steel ladder AS1892 6.0m	6.00	32.1	25	Rack	



Aluminium platform stair

Alum stair platform

Aluminium stairs are complete stair units with built in landings.

ALUM STAIR PLATFORM						
PRODUCTS		LENGTH	WEIGHT	PACKAGING		
CODE	DESCRIPTION	METRES	KG	QTY	TYPE	
316012575	Alum stair platform 200/257cm	2.0 x 2.57	29.7	12	PALLET	
316013075	Alum stair platform 200/307cm	2.0 x 3.07	40.0	12	PALLET	
316151600	Alum. stair platform 100/160cm	1.0 x 1.60	26.0	12	PALLET	



Aluminium platform stair guardrails

The Aluminium stair guardrail is used to provide a handrail on the inner side and outer side of the Aluminium stair platform.

ALUM STAIR INNER GUARDRAIL 2.57M						
PRODUCT		LENGTH	WEIGHT	PACKAGING		
CODE	DESCRIPTION	METRES	KG	QTY	TYPE	
316080005	Alum stair inner guardrail 2.57m	2.0 x 2.57	11.2	25	Rack	



ALUM STAIR INNER GUARDRAIL 100/160CM						
PRODUCT		LENGTH	WEIGHT	PACKAGING		
CODE	DESCRIPTION	METRES	KG	QTY	TYPE	
316161600	Alum stair inner guardrail 100/160cm	1.0 x 1.6	11.2	25	Rack	



ALUM STAIR INNER EXT. GUARDR.						
PRODUCT		LENGTH	WEIGHT	PACKAGING		
CODE	DESCRIPTION	METRES	KG	QTY	TYPE	
316052575	Alum stair inner ext. guardr. 200/257cm	2.57	14.8	20	Rack	
316053075	Alum stair inner ext. guardr. 200/307cm	3.07	16.0	20	Rack	



ALUM STAIR OUTER GUARDRAIL						
PRODUCT		LENGTH	WEIGHT	PACKAGING		
CODE	DESCRIPTION	METRES	KG	QTY	TYPE	
316062575	Alum stair outer guardrail 200/257cm	2.57	16.8	20	Rack	
316063075	Alum stair outer guardrail 200/307cm	3.07	18.4	20	Rack	



Guardrail / Edge protection

Guardrail standard crazy leg 1.63m

The Guardrail standards are used to create openings for access & egress and the ability to attach a Safety Gate.

GUARD RAIL STANDARD CRAZY LEG 1.63M					
PRODUCT		HEIGHT	WEIGHT	PACKAGING	
CODE	DESCRIPTION	METRES	KG	QTY	TYPE
301311630	Guardrail standard crazy leg 1.63m	1.5	8.2	70	Rack



Adjustable swing gate

Adjustable swing gate designed to secure an opening used for access & egress.

ADJUSTABLE SWING GATE					
PRODUCT		WIDTH	WEIGHT	PACKAGING	
CODE	DESCRIPTION	METRES	KG	QTY	TYPE
310012005	Adjustable swing gate SW21	1.0	8.7	34	Rack
310012003	Adjustable swing gate SW23	1.0	8.7	34	Rack



**Product available in a Nut Size of 21mm (MEA) and 23mm (EAP).

Access barrier

The Access barriers are designed to be used as a guardrail at the top and bottom of the Aluminum 4 leg Platform Stairs and can also be used to provide barriers around gaps in platforms for ladder access.

ACCESS BARRIER					
PRODUCT		WIDTH	WEIGHT	PACKAGING	
CODE	DESCRIPTION	METRES	KG	QTY	TYPE
310067005	Access barrier	0.7	11.1	26	Rack



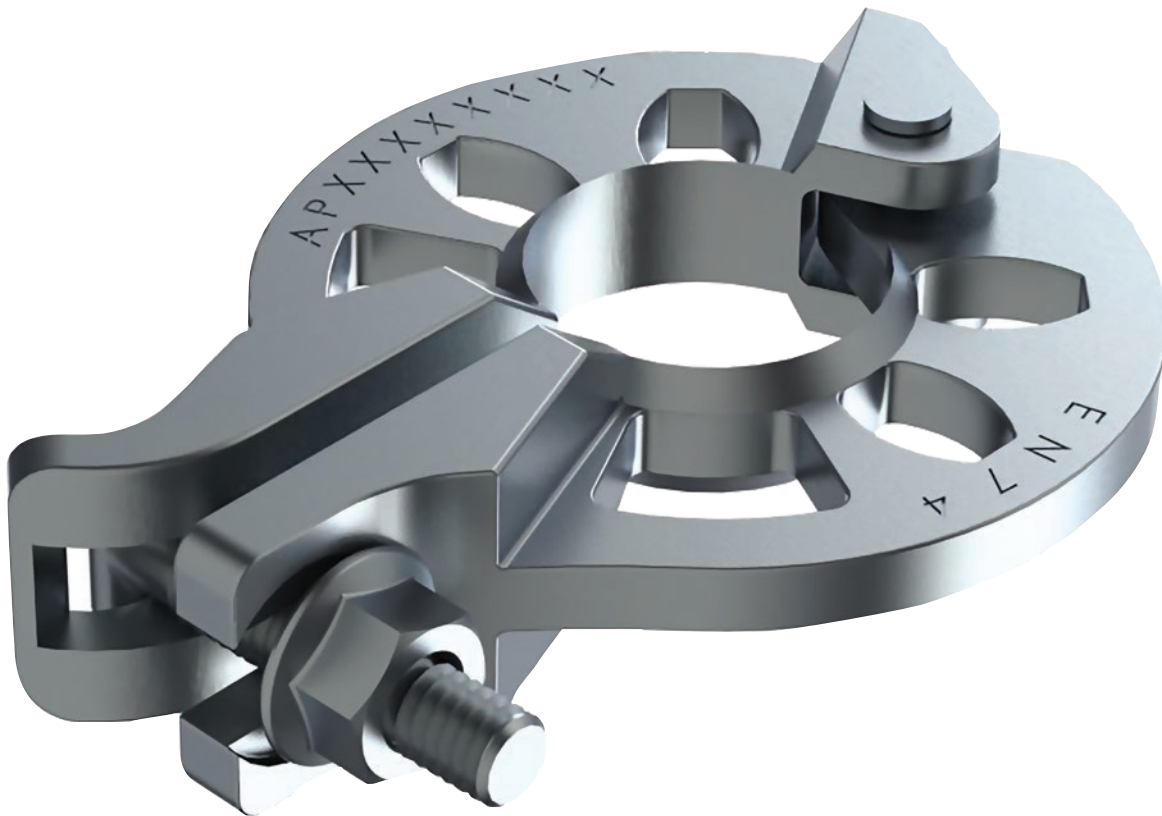
Ladder access transom

The Ladder access transom has been designed to allow for a Ringlock Standard to be used for creating a guardrail around openings in the platform. This allows for a Ringlock Adjustable Swing Gate to be fixed to the Standard in order to close the opening completely.

LADDER ACCESS TRANSOM					
PRODUCT		WIDTH	WEIGHT	PACKAGING	
CODE	DESCRIPTION	METRES	KG	QTY	TYPE
301220735	Ladder access transom 0.73m spigot	0.73	5.8	45	Rack + Insert



Accessories



Introduction

Doka has a continually growing list of accessories for Ringlock System Scaffold. These accessories enhance Ringlock capabilities for simple or complicated scaffold structures. Doka's Engineering department has a wealth of experience when it comes to designing and manufacturing components. On request from customers Doka can also design, manufacture and supply special components.

These special components are taken from concept to completion in a timely manner to ensure customers are able to maintain productivity at all times. All components are analysed by Professional Engineers and tested via recognised test laboratories, globally.

The accessory range of products include Rosette Coupler, Adapter Clamps, Leg Locks and Loading Bays to name a few.

Doka's Engineering department adopts the latest 3d design software and 3d printing capabilities in order to develop new products/ accessories. This strong emphasis on design, analysis and testing brings Doka to the forefront of design development within the scaffolding industry.

Clamps

Beam clamp forged rigid

The Beam clamp forged rigid is designed to connect scaffold tube to the flanges of structural steel beams. They can also be used to support suspended scaffold from structural steel.

BEAM CLAMP RIGID				
PRODUCT		WEIGHT	PACKAGING	
CODE	DESCRIPTION	KG	QTY	TYPE
304032005	Beam clamp forged rigid SW21	1.7	700	Rack + Insert
304032003	Beam clamp forged rigid SW23	1.7	700	Rack + Insert

**Product available in a Nut Size of 21mm (MEA) and 23mm (EAP).



Beam clamp swivel

The Beam clamp swivel is designed to connect scaffold tube to the flanges of structural steel beams. They can also be used to support suspended scaffold and create a variety of angles.

BEAM CLAMP SWIVEL				
PRODUCT		WEIGHT	PACKAGING	
CODE	DESCRIPTION	KG	QTY	TYPE
304042005	Beam clamp swivel SW21	1.6	700	Rack + Insert
304042003	Beam clamp swivel SW23	1.6	700	Rack + Insert

**Product available in a Nut Size of 21mm (MEA) and 23mm (EAP).



Putlog clamp

The Putlog clamp is designed to position the Putlog Tube or Transoms — typically to support wood planks or loose steel planks.

PUTLOG CLAMP				
PRODUCT		WEIGHT	PACKAGING	
CODE	DESCRIPTION	KG	QTY	TYPE
304140005	Putlog clamp SW21	0.67	1,200	Rack + Insert
304140003	Putlog clamp SW23	0.67	1,200	Rack + Insert

**Product available in a Nut Size of 21mm (MEA) and 23mm (EAP).



Ladder hook clamp

The Ladder hook clamp is designed to fix an access Ladder to Ringlock scaffolds. The Hook fits around the Ladder uprights and can be clamped directly to the Ringlock Ledger.

LADDER HOOK CLAMP				
PRODUCT		WEIGHT	PACKAGING	
CODE	DESCRIPTION	KG	QTY	TYPE
304150005	Ladder hook clamp SW21	0.96	750	Rack + Insert
304150003	Ladder hook clamp SW23	0.96	750	Rack + Insert

**Product available in a Nut Size of 21mm (MEA) and 23mm (EAP).



Rosette clamp t-bolt

The Rosette clamp t-bolt allows users to add an additional rosette to any point along the vertical (tube Standard). It can accommodate up to six connection points.

ROSETTE CLAMP T-BOLT				
PRODUCT		WEIGHT	PACKAGING	
CODE	DESCRIPTION	KG	QTY	TYPE
301300005	Rosette clamp t-bolt SW21	1.2	750	Rack + Insert
301300003	Rosette clamp t-bolt SW23	1.2	750	Rack + Insert

**Product available in a Nut Size of 21mm (MEA) and 23mm (EAP).



Rosette clamp t-bolt horizontal

The Rosette clamp t-bolt horizontal has a single rosette opening that a typical Ringlock Ledger connects to. The clamp allows to connect Ringlock Ledgers anywhere along the length of a bay. Allowing to create an intermediate transom.

ROSETTE CLAMP T-BOLT HORIZONTAL				
PRODUCT		WEIGHT	PACKAGING	
CODE	DESCRIPTION	KG	QTY	TYPE
301300013	Rosette clamp t-bolt horizontal SW23	0.84	750	Rack + Insert
301300015	Rosette clamp t-bolt horizontal SW21	0.84	750	Rack + Insert

**Product available in a Nut Size of 21mm (MEA) and 23mm (EAP).



Adapter clamps

Swivel adapter clamp

The Swivel adapter clamp is designed to easily join a scaffold tube to the rosette of a Ringlock Scaffold producing a variety of angles.

SWIVEL ADAPTER CLAMP				
PRODUCT		WEIGHT	PACKAGING	
CODE	DESCRIPTION	KG	QTY	TYPE
305022005	Swivel adapter clamp SW21	1.8	650	Rack + Insert
305022003	Swivel adapter clamp SW23	1.8	650	Rack + Insert

**Product available in a Nut Size of 21mm (MEA) and 23mm (EAP).



Right Angle (RA) adapter clamp

The RA adapter clamp is designed to easily join a scaffold tube directly to the Ringlock standard creating 90 degree angles.

RA ADAPTER CLAMP				
PRODUCT		WEIGHT	PACKAGING	
CODE	DESCRIPTION	KG	QTY	TYPE
305012005	RA adapter clamp SW21	1.6	650	Rack + Insert
305012003	RA adapter clamp SW23	1.6	650	Rack + Insert

**Product available in a Nut Size of 21mm (MEA) and 23mm (EAP).



Wall ties

Wall ties

The Wall tie is designed to attach to a Scaffold tube and butt to a supporting structure. The hole on the wall tie bracket allows a bolt to be installed in order to secure the scaffold Wall Ties to the supporting structure.

WALL TIES					
PRODUCT		WEIGHT	PACKAGING		
CODE	DESCRIPTION	KG	QTY	TYPE	
338191000	Wall tie tube 1.00m with hook	4.4	300	Rack + Insert	
338191500	Wall tie tube 1.50m with hook	6.2	300	Rack + Insert	
338180023	Wall tie bracket double	3.8	300	Rack + Insert	
352512000	Eye-bolt GS M12x120	0.17	25	Box	
352523000	Eye-bolt GS M12x230	0.35	25	Box	
352610000	Plastic rawl S14x100	0.007	200	Box	

**Product available in a Nut Size of 21mm (MEA) and 23mm (EAP).



Tube joiner

External tube joiner

The External tube joiner is designed to fit over the outside of the tubes and provide a rigid connection between two tubes.

EXTERNAL TUBE JOINER				
PRODUCT		WEIGHT	PACKAGING	
CODE	DESCRIPTION	KG	QTY	TYPE
304100005	Tube joiner SW21 external	1.0	672	Rack + Insert
304100003	Tube joiner SW23 external	1.0	672	Rack + Insert

**Product available in a Nut Size of 21mm (MEA) and 23mm (EAP).



Internal tube joiner

The Internal tube joiner is designed to fit inside the end of the tubes and provide a rigid connection.

INTERNAL TUBE JOINER				
PRODUCT		WEIGHT	PACKAGING	
CODE	DESCRIPTION	KG	QTY	TYPE
304110005	Tube joiner SW21 internal	0.8	1500	Rack + Insert
304110003	Tube joiner SW23 internal	0.8	1500	Rack + Insert

**Product available in a Nut Size of 21mm (MEA) and 23mm (EAP).



Miscellaneous

Scaffold storage rack with mesh

The Scaffold storage rack with mesh is designed to storage smaller scaffold items such as clamps and accessories.

SCAFFOLD STORAGE RACK					
PRODUCT		HEIGHT/ DEPTH	WEIGHT	PACKAGING	
CODE	DESCRIPTION	METRES	KG	QTY	TYPE
399200010	Scaffold storage rack with mesh	1.16 x 1.16	84.6	1	Rack



Scaffold storage rack

The Scaffold storage rack is designed for storage of larger items such as Standards, Ledgers, Steel Plank, etc.

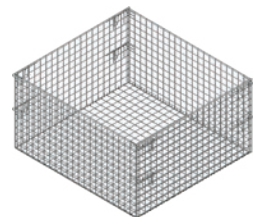
SCAFFOLD STORAGE RACK					
PRODUCT		HEIGHT/ DEPTH	WEIGHT	PACKAGING	
CODE	DESCRIPTION	METRES	KG	QTY	TYPE
399020000	Scaffold storage rack	0.77 x 1.1	48.1	1	Rack + Insert



Scaffold cage insert

The Scaffold cage insert is designed to fit into the storage rack, to create the Basket for storage of smaller scaffold items such as clamps and accessories.

SCAFFOLD CAGE INSERT					
PRODUCT		HEIGHT/ DEPTH	WEIGHT	PACKAGING	
CODE	DESCRIPTION	METRES	KG	QTY	TYPE
399010000	Scaffold cage insert	0.55 x 1.0	29.0	1	Insert



Near to you, worldwide

Doka is one of the world leaders in developing, manufacturing and distributing formwork technology for use in all fields of the construction sector.

With more than 160 sales and logistics facilities in over 70 countries, the Doka Group has a highly efficient distribution network which ensures that equip-

ment and technical support are provided swiftly and professionally.

An enterprise forming part of the Umdasch Group, the Doka Group employs a worldwide workforce of more than 6000.

