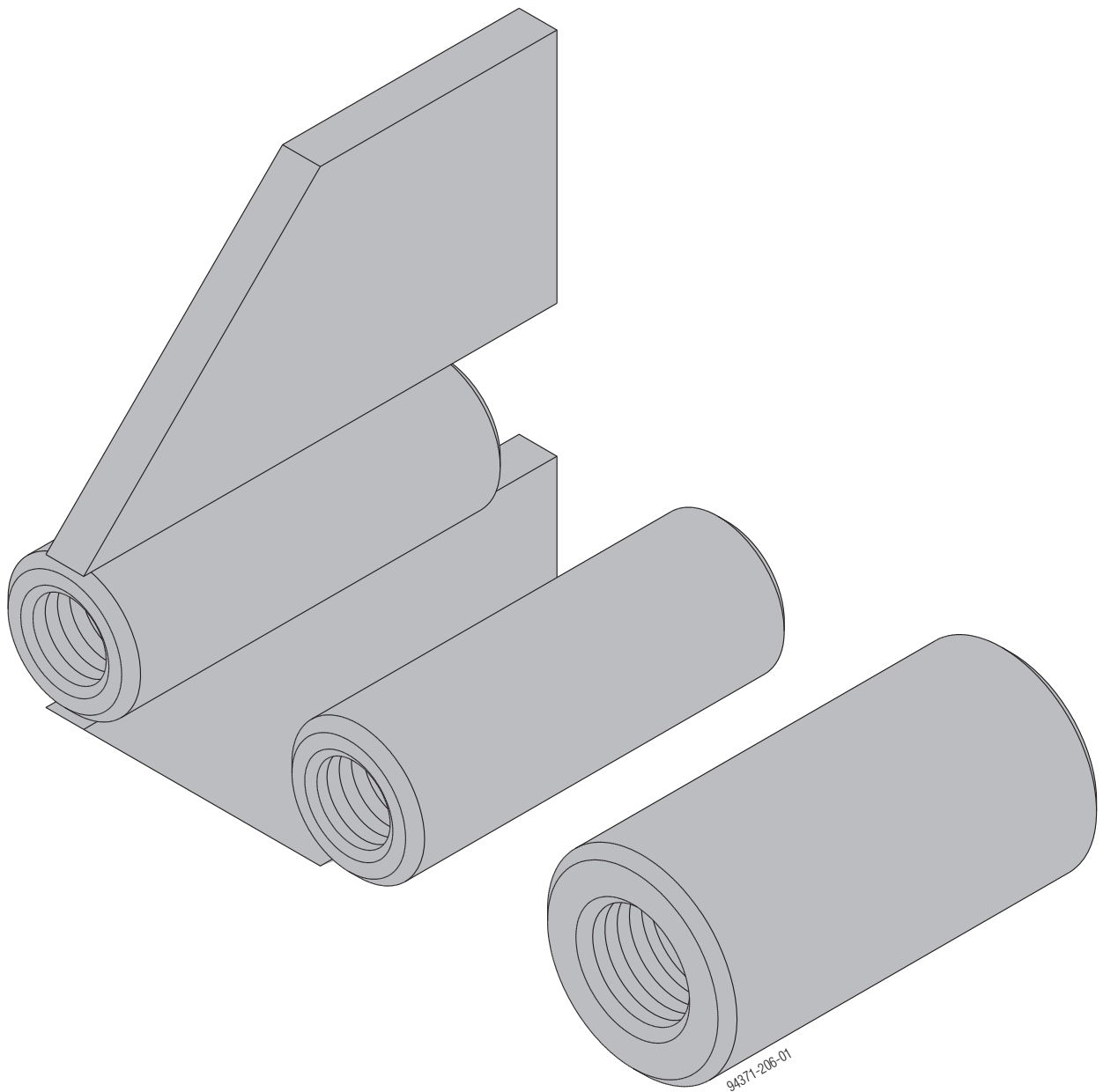


The Formwork Experts.

Weldable couplers

Fitting instructions



Weldable coupler 15.0 and 20.0

Product description

The Weldable couplers 15.0 and 20.0 are used for anchoring Tie-rods 15.0 and 20.0 to steel components.

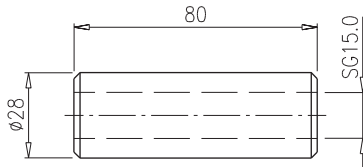


WARNING

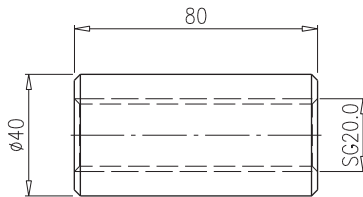
- ▶ The Weldable couplers are not suitable for joining the tie-rods themselves.

Basic drawings of product

Weldable coupler 15.0 Art.n° 581691000



Weldable coupler 20.0 Art.n° 581474000



How to attach:



WARNING

- ▶ Ensure that the coupler is welded-on centrally, so that no additional moments are created in the joint.
- ▶ The parts to which the couplers are to be connected must be suitably dimensioned.
- ▶ Observe all the standards and regulations applying to on-site welding work!
- ▶ Do not weld the couplers if they have tie-rods screwed into them – this would risk fracturing them!

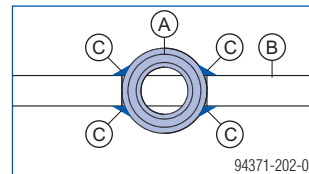
Weldable coupler 15.0:

- Permitted capacity to DIN 18216: 90 kN
- Permitted capacity, allowing a 1.6 : 1 factor of safety against failure: 120 kN

Weldable coupler 20.0:

- Permitted capacity to DIN 18216: 150 kN
- Permitted capacity, allowing a 1.6 : 1 factor of safety against failure: 220 kN

- ▶ To achieve the required permitted capacity, it is necessary to weld 2 fillet welds on each side of the weldable coupler, along its entire length.



Weldable coupler	Load capacity [kN]	Fillet welds		
		N° of welds	Thickness a [mm]	Length [mm]
15.0	90	4	3	60
	120	4	3	80
20.0	150	4	4	80
	220	4	5	80

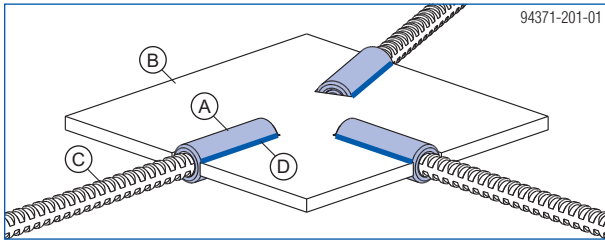
A Weldable coupler 15.0 and 20.0

B Steel component

C Fillet weld

- ▶ Completely screw in the tie-rod, regardless of the required load capacity.

Practical example



- A Weldable coupler
- B Slotted anchor-plate
- C Tie-rod
- D Fillet weld

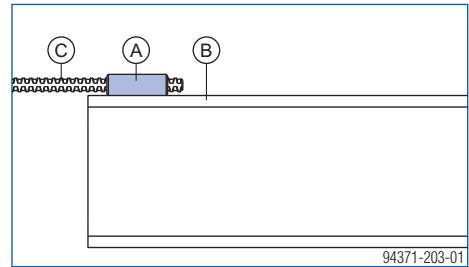
Practical examples of situations with reduced load capacity



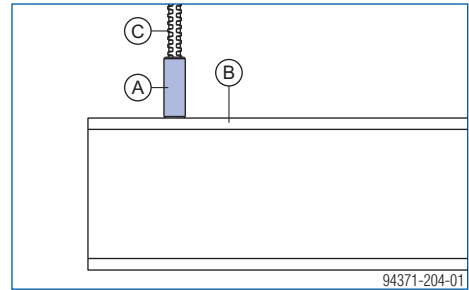
WARNING

► All connections must be statically dimensioned and designed, especially the load capacity of the welds and of the base metal.

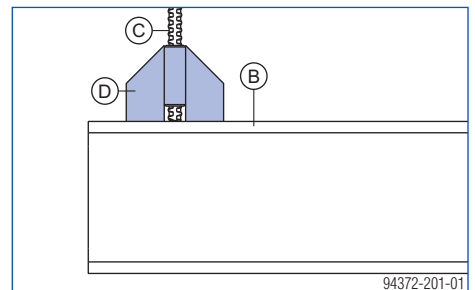
Welded onto I section



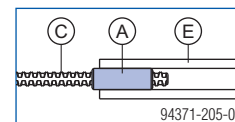
End face welded onto I section



Instead of welding Weldable couplers 15.0 to I sections by their end faces, we recommend using 'Weldable couplers 15.0 for sheet wall'.



Welded onto reinforcement rod



- A Weldable coupler
- B I section
- C Tie-rod
- D Weldable coupler 15.0 for sheet wall
- E Reinforcement rod

Weldable coupler 15.0 for sheet wall

Product description

The 'Weldable coupler 15.0 for sheet wall' is used for anchoring Tie rods 15.0 to a steel component.

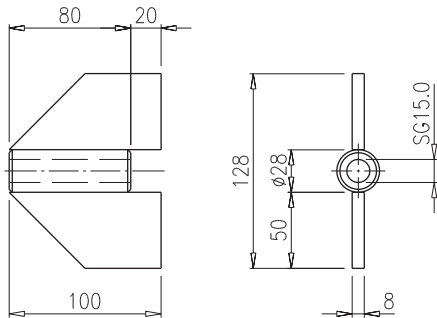


WARNING

- ▶ The Weldable coupler 15.0 for sheet wall is not suitable for joining the tie-rods themselves.

Basic drawings of product

Weldable coupler 15.0 for sheet wall Art.n° 581693000



How to attach:

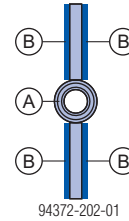


WARNING

- ▶ Check with the site to determine whether the wall thickness and quality of the steel walls are suitable for transferring the expected forces.
- ▶ Observe all the standards and regulations applying to on-site welding work!
- ▶ Do not weld the couplers if they have tie-rods screwed into them – this would risk fracturing them!

- Permitted capacity to DIN 18216: 90 kN
- Permitted capacity, allowing a 1.6 : 1 factor of safety against failure: 120 kN

- ▶ To achieve the required permitted capacity, it is necessary to weld a fillet weld along the entire length of the plate, on both sides.



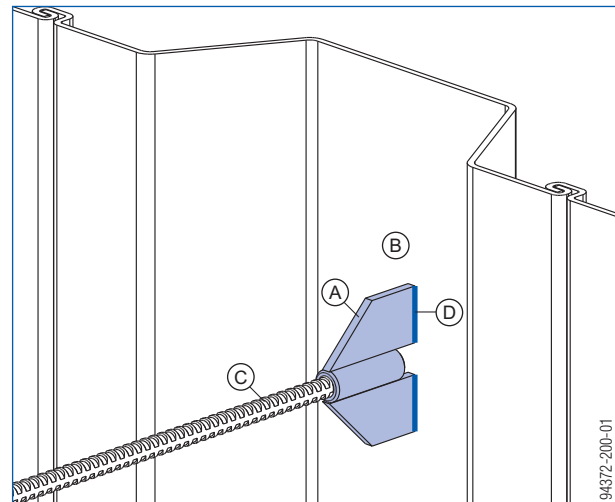
A Weldable coupler 15.0 for sheet wall

B Fillet weld (a = 4 mm, l = 50 mm)

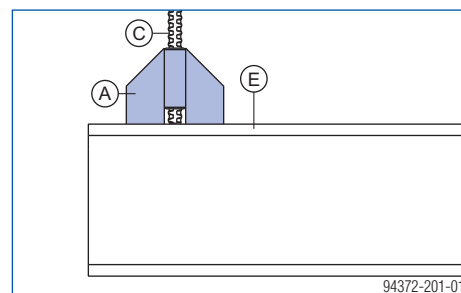
- ▶ Completely screw in the tie-rod, regardless of the required load capacity.

Practical examples

Welded onto sheet-pile wall



Welded onto I section



A Weldable coupler 15.0 for sheet wall

B Sheet-pile wall

C Tie-rod 15.0

D Fillet weld

E I section